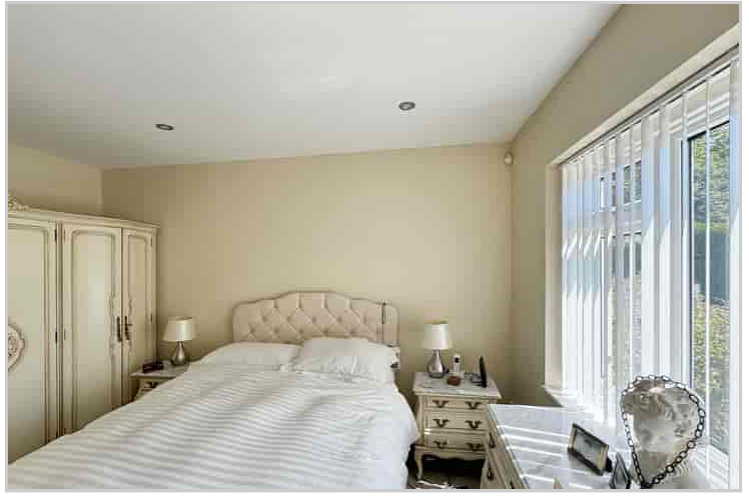


52 Kynaston Road, Orpington, Kent, BR5 4JT

**Property Images**

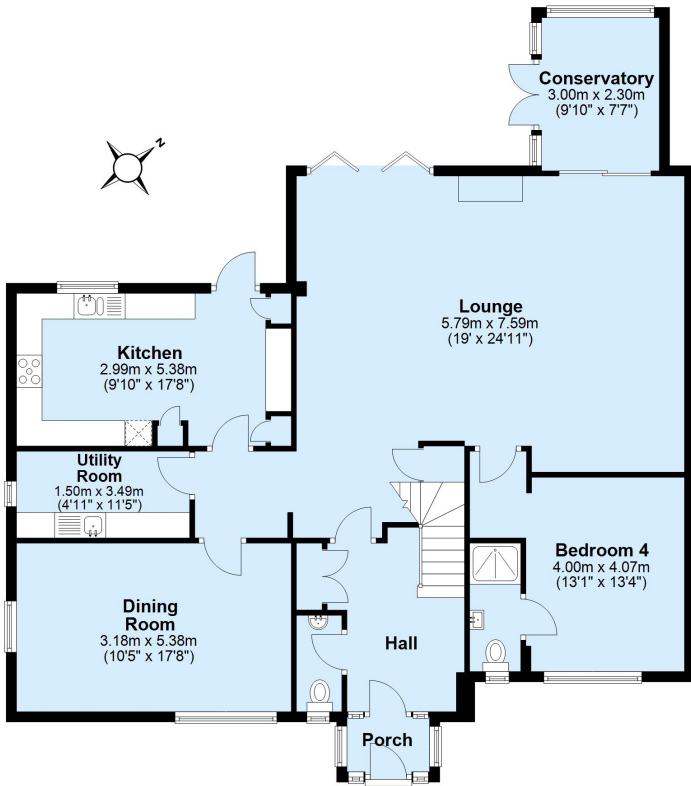






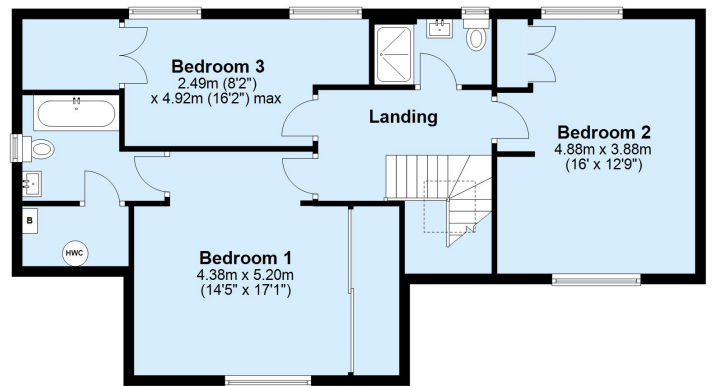
### Ground Floor

Approx. 130.0 sq. metres (1399.8 sq. feet)



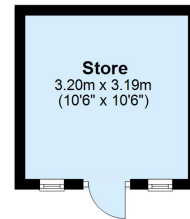
### First Floor

Approx. 75.7 sq. metres (814.4 sq. feet)



### Outbuilding

Approx. 10.2 sq. metres (110.0 sq. feet)



Total area: approx. 215.9 sq. metres (2324.2 sq. feet)

This plan is for general layout guidance and may not be to scale.  
Plan produced using PlanUp.