

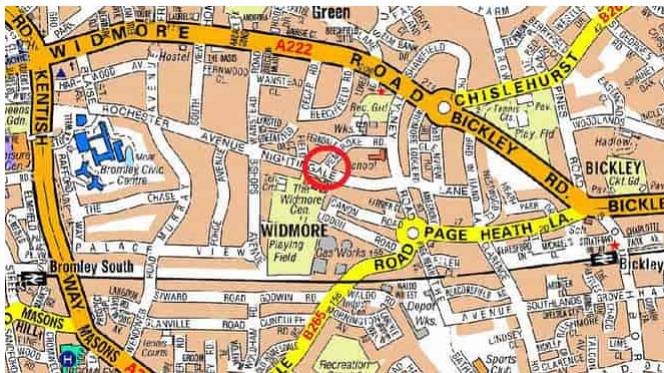


Nightingale Lane,

Bromley, Kent. BR1 2SE

Tenure: Freehold

4 Bedrooms | 2 Reception Rooms | 2 Bathrooms



An elegant four-bedroom terraced home ideally positioned near the sought-after La Fontaine Academy. This beautifully appointed property boasts a luxurious loft-converted master bedroom with ensuite, alongside three well-proportioned bedrooms and a contemporary family bathroom on the first floor. The ground floor features a sophisticated front reception with bay windows and a stunning extended kitchen/dining area, flooded with natural light. A well sized garden includes a substantial outbuilding, ideal for a home office or studio. A perfect blend of style, space, and location. EPC

Rating: D

Enquiries To:

T: 020 8467 2252

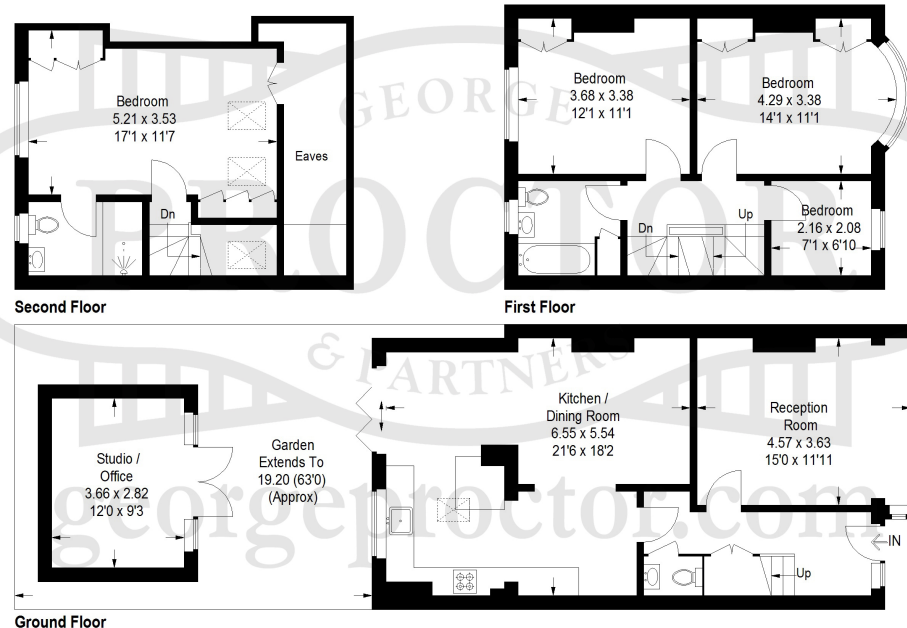
E: beosales@georgeproctor.com



The Bickley Estate Office

Southborough Road, Bickley, Kent, BR1 2EB

Approximate Gross Internal Area (Excluding Eaves) = 130.6 sq m / 1406 sq ft
Studio / Office = 10.7 sq m / 115 sq ft
Total = 141.3 sq m / 1521 sq ft



These particulars whilst believed to be accurate are made without responsibility on the part of the vendor or agents, their accuracy is not guaranteed nor do they form part of any contract and no warranty is given. Services or appliances have not been tested and no guarantee can be given as to their operation, buyers should seek professional advice where necessary. All measurements are approximate and may be rounded to the nearest three inches (10 cm). Floor plans, where shown, are indicative only. Any photographs included may be taken with the use of a wide angle lens. If there is a matter of particular interest please contact us for further information, especially before travelling any distance to view. Map reproduced by permission of Geographers A-Z Map Co Ltd. Licence No. A0514. This map is based upon Ordnance Survey maps with the permission of the controller of Her Majesty's Stationary Office.