



**daniels**  
danielsestateagents.co.uk

**daniels**  
danielsestateagents.co.uk



Holmefield House, Hazlewood Crescent, Ladbroke Grove, London W10 5FS  
**£475,000 - Leasehold**



## PROPERTY DESCRIPTION

### GREAT LOCATION...

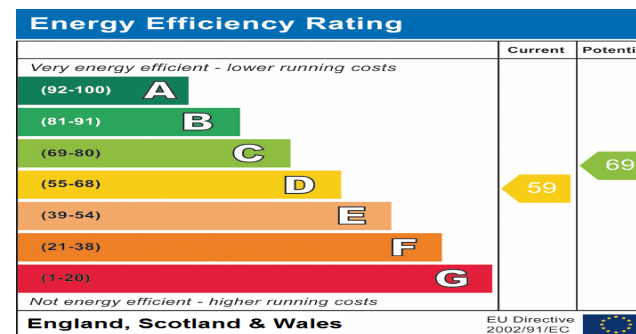
A WELL PRESENTED & SPACIOUS TWO DOUBLE BEDROOM FLAT set on the 3rd floor of this popular purpose built block, the property is split level and boasts approx 750 sqft of internal living space.

Benefits include SPACIOUS LIVING ROOM, KITCHEN BREAKFAST ROOM & stairs to UPPER FLOOR with TWO DOUBLE BEDROOMS, FAMILY BATHROOM and access to SHARED BALCONY.

Located just off Kensal Road offering fantastic transport links with Ladbroke Grove and Portobello both only a short walking distance away.

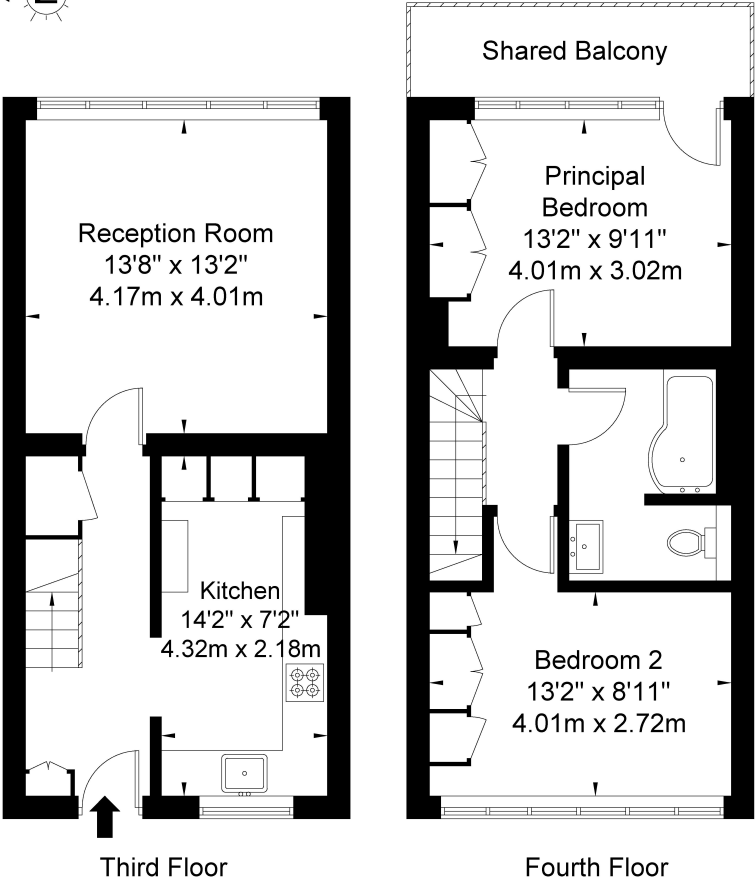
## POINTS OF INTEREST

- TWO DOUBLE BEDROOMS
- SPLIT OVER TWO FLOORS
- APPROX 750SQFT
- SHARED BALCONY
- SPACIOUS AND LIGHT LIVING ROOM
- POPULAR LOCATION



# Holmefield House Hazlewood Crescent W10 5FS

Approx Gross Internal Area = 69.6 sq m / 749 sq ft



Ref

Copyright **BLEU PLAN**

The Floor plan is not to scale and measurements and areas shown are approximate and therefore should be used for illustrative purposes only. The plan has been prepared in accordance with the RICS code of Measuring Practice and whilst we have confidence in the information produced it must not be relied on. If there is any aspect of particular importance, you should carry out or commission your own inspection of the property.

Copyright @ BLEUPLAN