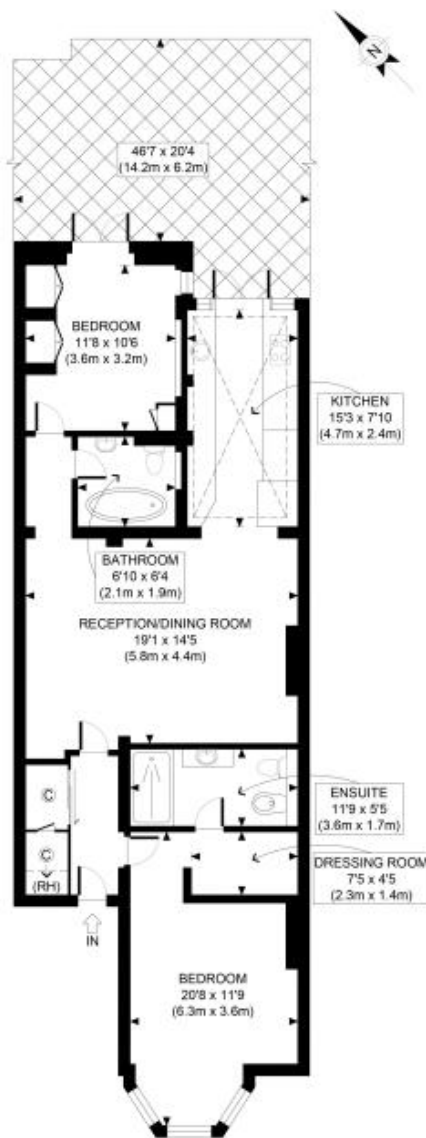




## Ground Floor, 14 Fortune Green Road, London, NW6 1UE

£3,000 pcm

- 2 Bedrooms
- Private Garden
- Located Close to the Transport Links & Amenities of West Hampstead
- 2 Bathrooms
- Bright & Spacious Throughout
- Available Now



GROUND FLOOR  
GROSS INTERNAL  
FLOOR AREA 996 SQ FT

APPROX. GROSS INTERNAL FLOOR AREA 996 SQ FT / 93 SQM

Ref: Copyright **photoplan**

Disclaimer: Floor plan measurements are approximate and are for illustrative purposes only. While we do not doubt the floor plan accuracy and completeness, you or your advisors should conduct a careful, independent investigation of the property in respect of monetary valuation

