



1 The Stables, Natures Point, Pistyll, Pwllheli, Gwynedd. LL53 6LR

- STUNNING PANORAMIC SEA VIEWS
- ON SITE AND HOLIDAY LET MANAGEMENT AVAILABLE
- CURRENTLY USED AS A SECOND HOME/HOLIDAY LET
- NO ONWARD CHAIN
- BAND B COUNCIL TAX
- SOLD FULLY FURNISHED
- SUCCESSFUL HOLIDAY LET

PROPERTY DESCRIPTION

Discover your perfect coastal escape at 1 The Stables, Nature's Point. Tucked away in a spectacular location on the beautiful Llyn Peninsula, this stunning cottage has been meticulously renovated to blend modern luxury with serene country living. The unique upside-down layout is designed to maximize the breathtaking scenery.

Three tranquil bedrooms and two beautifully appointed bathrooms are located on the ground floor, offering a peaceful retreat after a day of exploring. The true heart of the home is upstairs, where the bright and spacious open-plan living area and kitchen reside. Here, Velux balcony windows open up to provide a stunning vantage point, allowing you to soak in the incredible panoramic views. It's the ideal spot for morning coffee or an evening watching the sunset.

NOTE: Properties at Natures Point can be used for holiday use only. They cannot be used as a primary address.

Tenure - Leasehold. 999 Years. The current service charge is £2,024 p/a for the Plas properties. This is reviewed annually.

Council Tax Band – B

Services Mains water and electricity, Gas central heating. Waste water treatment plant (Klargester)

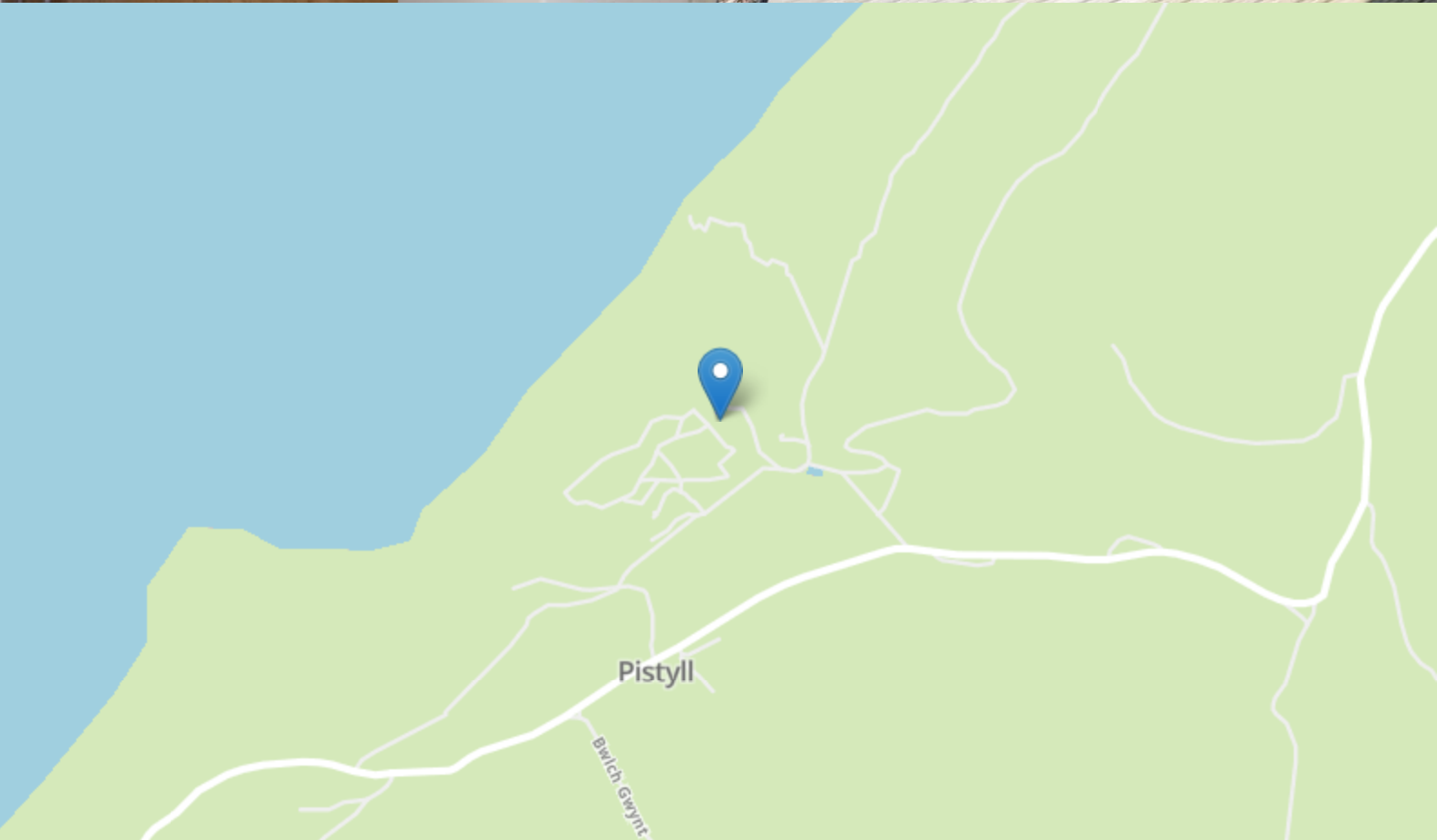
Location Information Pwllheli 6.3 miles . Porthmadog 17 miles . Bangor 27.1 miles . Chester 79.6 miles . Shrewsbury 86.7 miles . Manchester 117 miles.

Viewing Viewing is strictly by appointment only with Elvins Estate Agents

Marketing Appraisal Thinking of Selling? We are an independent estate agency and have experienced local property experts who can offer you a free marketing appraisal without obligation. It is worth remembering that we may already have a purchaser waiting to buy your home.

MISREPRESENTATION DISCLAIMER: Although our particulars are thought to be materially correct their accuracy cannot be guaranteed and they do not form part of any contract. They are intended as a guide only and purchasers must satisfy themselves by personal inspection. You may download, store and use the material for your own personal use and research. You may not republish, retransmit, redistribute or otherwise make the material available to any party or make the same available on any website.



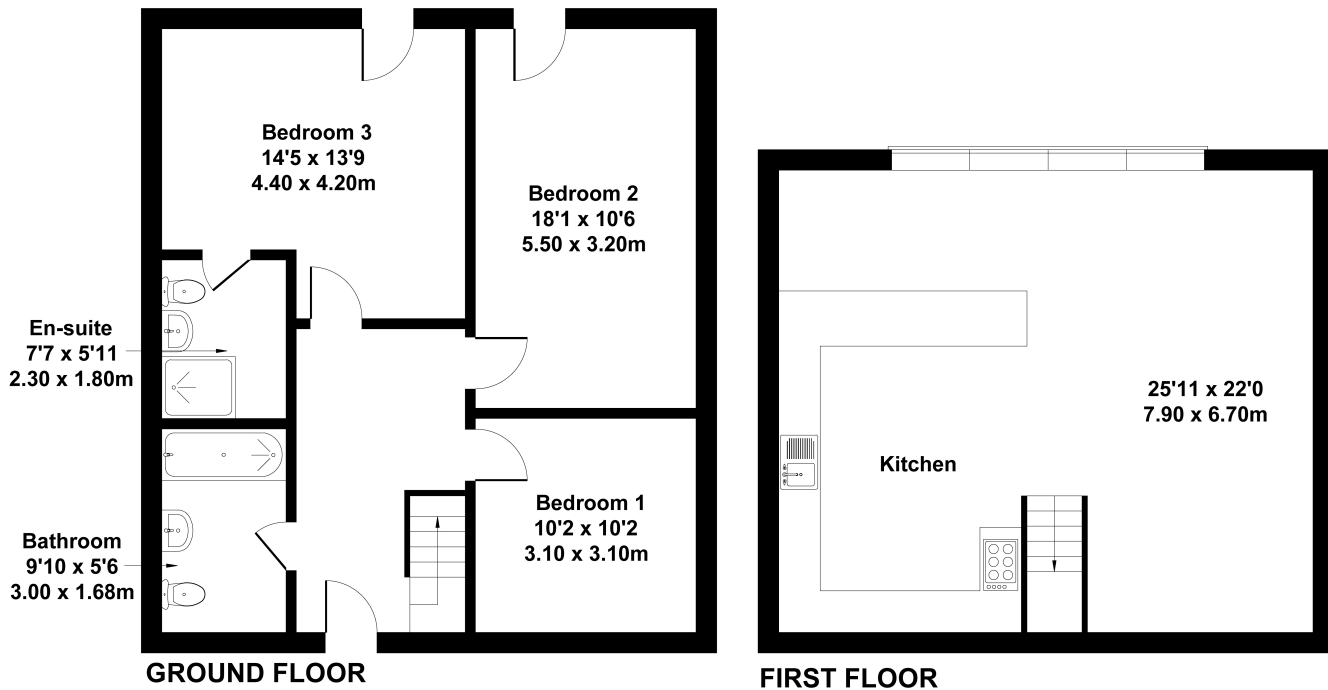


FLOORPLAN



1 The Stables, Pistyll

Approximate Gross Internal Area
1292 sq ft - 120 sq m



Not to Scale. Produced by The Plan Portal 2025
For Illustrative Purposes Only.