



18 Greenway, Campton, Shefford, Bedfordshire, SG17 5BN

£575,000

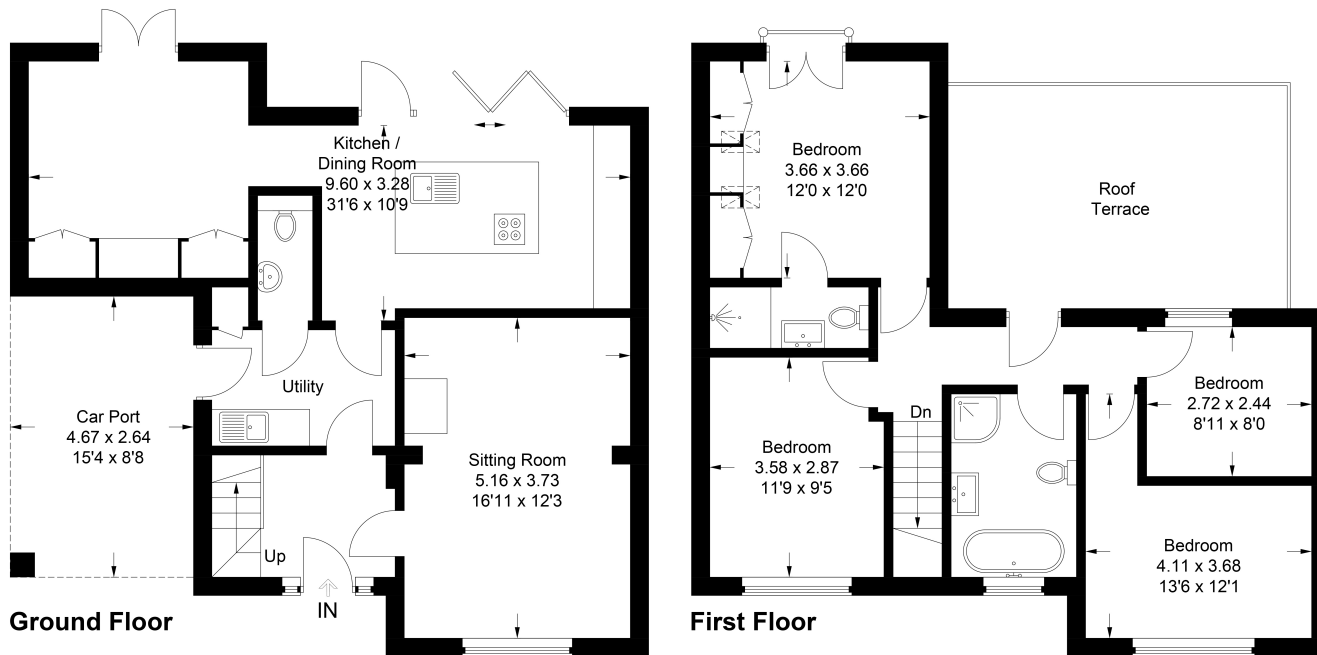
A unique opportunity to own this beautifully presented four-bedroom family home set on a generous 1/4-acre plot in the highly sought-after village of Campton. The property has an impressive kitchen with bi fold doors, island and integrated appliances and separate dining area with doors to garden, great for cooking and entertaining. The lounge has a free-standing log burner and there is a separate utility and cloakroom. The newly remodelled master bedroom features an en suite bathroom, custom built furniture, and a Juliet balcony offering far reaching views. The property boasts a huge south-east facing garden overlooking open farmers' fields and which can also be enjoyed from the roof terrace. Additionally, the large driveway provides off-road parking for three vehicles and is equipped with an electric car charger.



Approximate Gross Internal Area
 Ground Floor = 66.6 sq m / 717 sq ft
 First Floor = 60.1 sq m / 647 sq ft
 (Excluding Car Port)
 Total = 126.7 sq m / 1,364 sq ft



- AMAZING EXTENDED FOUR BEDROOM FAMILY HOME ON 1/4 ACRE PLOT
- GREAT LOCATION SOUGHT AFTER VILLAGE - FIRST TIME ON THE MARKET FOR 40 YEARS
- IMPRESSIVE KITCHEN/DINER WITH BUILT IN APPLIANCES - WELL DESIGNED IDEAL FOR COOKING + ENTERTAINING
- SITTING ROOM WITH LOG BURNER
- LUXURIOUS MASTER BEDROOM WITH CUSTOM BUILT IN FURNITURE + EN-SUITE + JULIET BALCONY WITH FAR REACHING VIEWS
- ROOF TERRACE THAT OVERLOOKS GARDEN + FARMERS FIELD BEYOND
- SOUTH EAST FACING 1/4 ACRE GARDEN
- CAR PORT + DRIVEWAY FOR THREE CARS + ELECTRIC CHARGING POINT



This plan is for layout guidance only. Not drawn to scale unless stated. Windows and door openings are approximate. Whilst every care is taken in the preparation of this plan, please check all dimensions, shapes and compass bearings before making any decisions reliant upon them.
 © CJ Property Marketing Ltd Produced for Lane & Bennetts

