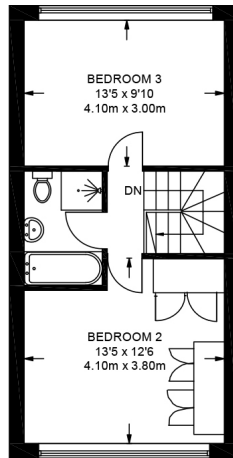


## Squires Bridge Road, Shepperton, TW17 0JU

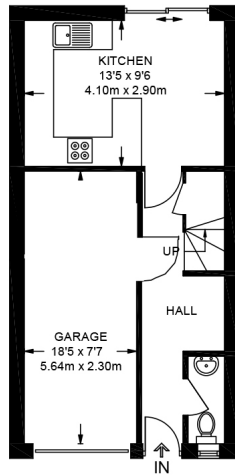
**£450,000**



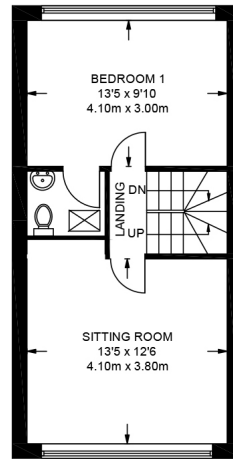
- Well Presented Three Bedroom Townhouse
- Two Bathrooms and a Cloakroom
- Kitchen/Diner
- Within 1 Mile of High Street and Station
- Three Double Bedrooms (1 En-Suite)
- Integral Garage and Driveway
- Catchment area for Littleton, Saxon & Thamesmead Schools
- Freehold, Council Tax Band E



**SECOND FLOOR**  
388 SQ FT / 36.1 SQ M



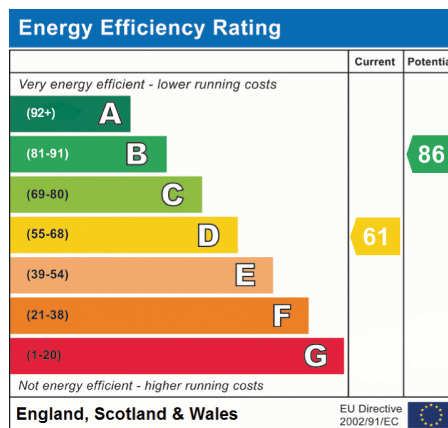
**GROUND FLOOR**  
377 SQ FT / 35.0 SQ M



**FIRST FLOOR**  
388 SQ FT / 36.1 SQ M

**APPROXIMATE GROSS INTERNAL AREA**  
**1154 SQ FT / 107.2 SQ M**

This plan has been drawn for illustrative and identification purposes only.



We have not tested the services or domestic appliances so we cannot verify that they are in working order. The buyer is advised to obtain verification from their solicitor or surveyor. These particulars form no part of any offer or contract and their accuracy cannot be guaranteed.