



5 Well Crescent, Glenrothes, Fife, KY7 5HH

Beautifully Presented & Spacious, Three-Bedroom, End-Terrace Home with Gardens, Driveway & Garage

Up to date price and viewing info at [mov8realestate.com/property](https://www.mov8realestate.com/property)

espc rightmove  Zoopla
find your happy

Property Description

Beautifully presented and spacious, three-bedroom, end-terrace family home, with gardens, a detached garage and a driveway. Set on a generous corner plot, of a quiet cul-de-sac, in a desirable and well-established residential area of Glenrothes, Fife.

Comprises an entrance porch, hall, living/dining room, kitchen, three double bedrooms, and a family bathroom.

Tastefully finished throughout, highlights include a quality fully integrated kitchen, a modern bathroom, gas central heating and double glazing. In addition, there is a gas fireplace for the lounge, superb storage with a floored loft, a garage with power and lighting, a maintained alarm system and security lighting around the property.

Externally, the property benefits from immaculate and generous gardens including lawns, patios, two store sheds and an eclectic mix of shrubbery.

A welcoming porch offers space for outerwear and opens into the main hall, providing access throughout the ground floor, including a storage cupboard. Enjoying a dual aspect allowing plentiful natural light, a spacious living room has space for a dining area, carpeted flooring, a gas fireplace and French patio doors leading to the garden.

Set to the rear, a good-size kitchen offers further garden access; whilst fitted units include real-wood worktops, a sink with a drainer, a tiled surround; and an integrated oven, gas hob, washing machine, dishwasher, tumble dryer and a fridge/freezer.

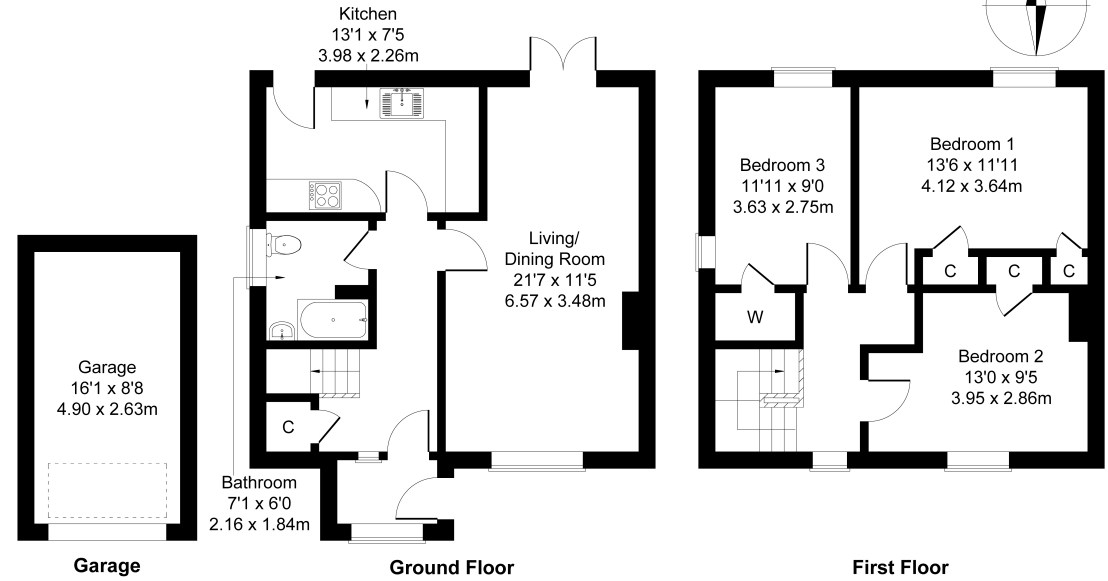
Completing the ground floor, the family-size bathroom is fitted with a three-piece suite including a rainfall shower over the bath and tiled splash walls.

On the upper hall, bedroom one is set to the rear, with carpeted flooring, a central light fitting and two built-in storage cupboards; whilst bedroom two is set to the opposite aspect, and bedroom three is to the rear enjoying a dual aspect, similarly finished with carpeted flooring and built-in storage space.



5 Well Crescent, Glenrothes KY7 5HH

Approximate Gross Internal Area: (1109 sq ft - 103 sq m.)



Legal Disclaimer : Floor-plan and measurements are for illustrative guidance only, and not intended to form part of any contract.

Area Description

Glenrothes is Fife's third largest town, with a mixture of residential properties throughout. Retail opportunities include the Kingdom Shopping Centre, with a broad range of high-street names, with supermarkets including an ASDA, ALDI, Lidl and Marks & Spencer. The Michael Woods Centre provides extensive modern sports and leisure facilities, whilst Glenrothes boasts its very own

18-hole golf course, cinema and theatre in the Rothes Halls. Both primary and secondary schooling are well provided for, with further education available at The Adam Smith College at the Stenton campus of Fife College. For the commuter, the A92 allows rapid access to Edinburgh and the central belt and there are railway stations at both Thornton and Markinch.





Our Services

- Free pre-sale property valuations
- Great value fixed estate agency fees
- Extensive buyer matching database
- Purchase and sale conveyancing

Contact Us

0345 646 0208

sales@mov8realestate.com

www.mov8.com

Head Office

6 Redheughs Rigg, Edinburgh, EH12 9DQ

Glasgow Office

77 Renfrew Street, Glasgow, G2 3BZ



Estate Agents and Solicitors

