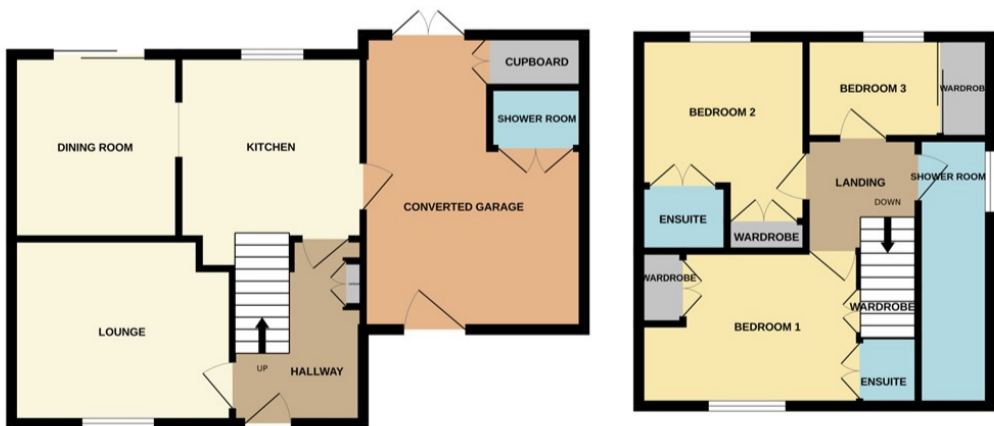




Bourne

£245,000



THREE/FOUR BEDROOM FAMILY HOME WITH NO ONWARD CHAIN WHICH REALLY HAS THE WOW FACTOR! Offers in Excess of £245,000 are invited for this exceptional house which is situated close to local amenities. The property offers versatile living accommodation with a converted garage which provides a large room with its own front and rear access and a shower room, so could be used for a variety of uses: annex, gym, business (subject to necessary permissions) etc. The house itself has a great size lounge, kitchen with appliances leading through to a dining room with access on to the private, low maintenance rear garden. Upstairs there are three bedrooms, two with ensuite shower rooms and a further separate shower room. There is also a fully operational fire alarm system, fire doors, emergency lighting and off road parking for several vehicles. This property is a surprising gem and early viewing is recommended as it will not be around for long! EPC Energy Rating C/Council Tax A