



## Ashwood Road, Potters Bar, Hertfordshire, EN6

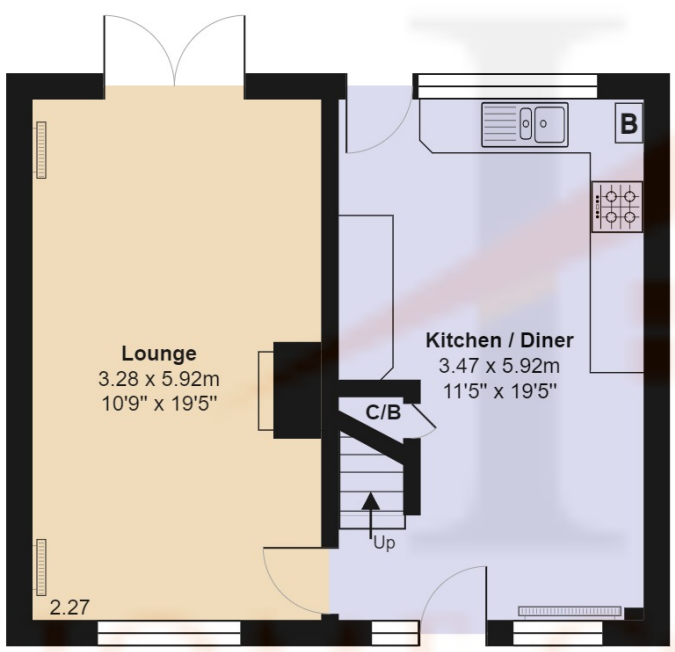
**£485,000**

- three bedroom home
- dual aspect lounge
- close to shops and transport
- off street parking
- kitchen diner
- walking distance to potters bar mainline station

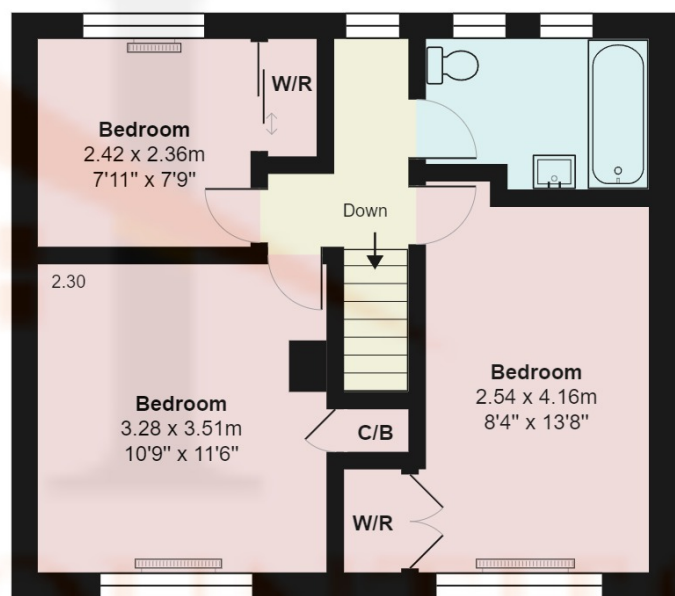
# Ashwood Road, Potters Bar, Hertfordshire, . EN6

## £485,000 Freehold

This three bedroom end of terrace family home is ideally located just moments from shops and restaurants and walking distance to Potters Bar Mainline Station. The property benefits from off street parking, dual aspect lounge and a large kitchen diner on the ground floor. The first floor comprises of three bedrooms with family bathroom, whilst externally the property benefits from a south facing private rear garden with decked patio area with pergola and lawn and side access.



**Ground Floor**  
Area: 41.2 m<sup>2</sup> ... 443 ft<sup>2</sup>



**First Floor**  
Area: 42.2 m<sup>2</sup> ... 454 ft<sup>2</sup>

## Ashwood Road, Hertfordshire EN6

Total Area: 83.4 m<sup>2</sup> ... 897 ft<sup>2</sup>

All measurements are approximate and for display purposes only

