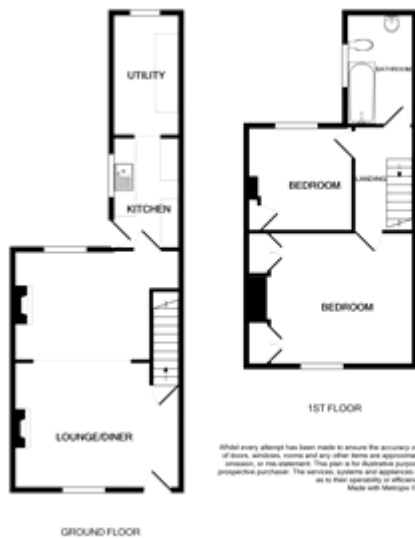


Checker Street, King's Lynn

£154,995

An extremely well presented two bedroom terrace house situated in the Friars area of King's Lynn. The accommodation comprises lounge diner, kitchen, utility room, two bedrooms and family bathroom. The property further benefits from a wood burning stove, gas central heating and low maintenance rear garden. A full range of amenities can be found within walking distance including a main line rail link into Cambridge and London King's Cross.



Whilst every attempt has been made to ensure the accuracy of the floor plan contained here, measurements of doors, windows, rooms and any other items are approximate and no responsibility is taken for any error, omission, or mis-statement. This plan is for illustrative purposes only and should be used as such by any prospective purchaser. The services, fixtures and appliances shown here are not tested and no guarantee as to their operability or efficiency can be given.
 Made with Memphis 10/16/16

