



**GREGORY BROWN**  
RESIDENTIAL SALES & LETTINGS

£390,000 Freehold  
**FOR SALE**



## **The Heathers, Staines-upon-Thames, Surrey, TW19 7AP**

WELL PRESENTED & SPACIOUS PROPERTY SITUATED WITHIN THIS MUCH SOUGHT AFTER CLOSE IDEALLY LOCATED FOR BOTH STAINES & ASHFORD TOWN CENTRES AND WITH EASY ACCESS TO LOCAL MOTORWAY NETWORKS & HEATHROW AIRPORT. The property benefits from a spacious lounge/diner, conservatory, two well-proportioned bedrooms, modern white bathroom suite, secluded rear garden and two allocated parking bays. Viewings Highly Recommended!

**Gregory Brown**

127a, High Street, Staines-upon-Thames, TW18 4PD

01784 451458

[staines@gregory-brown.co.uk](mailto:staines@gregory-brown.co.uk)

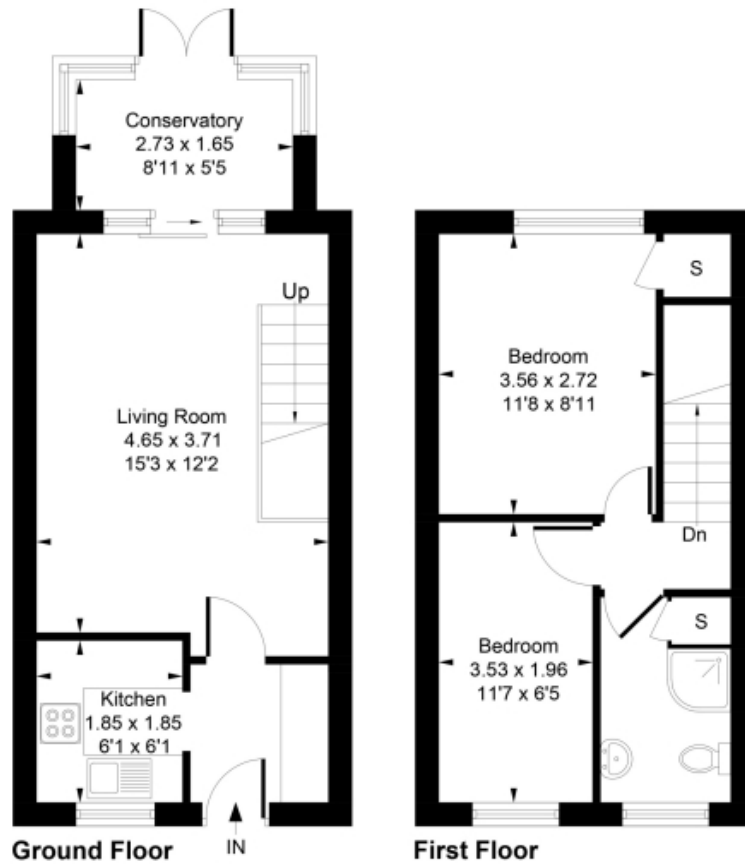
ROOM DESCRIPTIONS

\_\_\_\_\_

# FLOORPLAN

---

Approximate Gross Internal Area  
51.9 sq m / 559 sq ft



127a, High Street, Staines-upon-Thames, TW18 4PD

01784 451458

staines@gregory-brown.co.uk