

FOR SALE

St Albans Avenue,
Bedford Park borders, W4

Terraced House
Bedford Park borders

£950,000 fh

3  1  1 

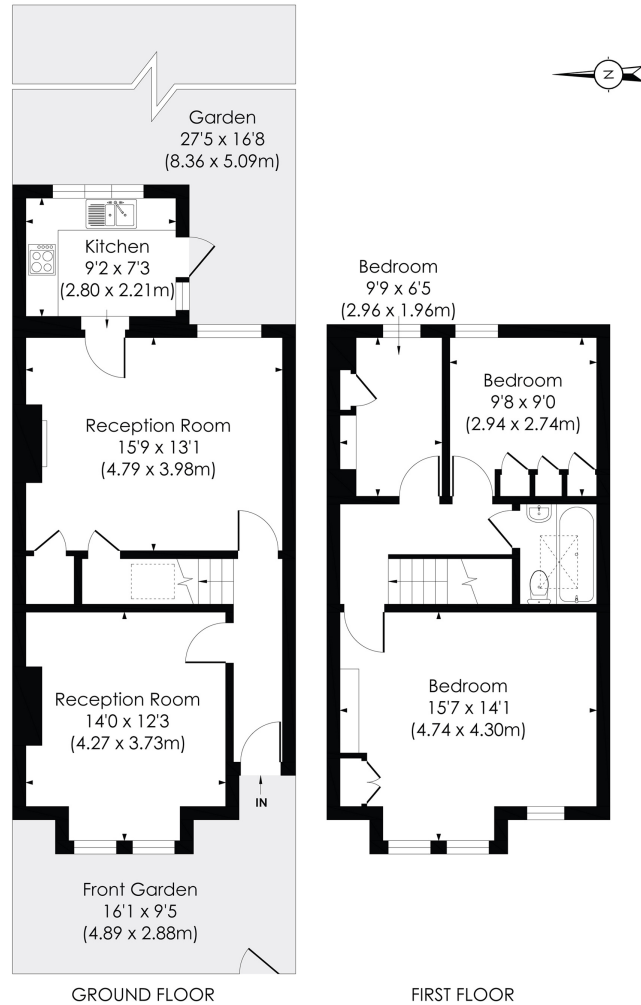


**horton
andgarton**

SALES / LETTINGS / PROPERTY MANAGEMENT

hortonandgarton.co.uk | Sales 020 3989 6464 | Lettings 020 3989 5454
161 Chiswick High Road, London, W4 2DT





ST ALBANS AVENUE, W4

Approx. Gross Internal Floor Area
1001 Sq' / 92.99 SqM



© Pixangle Property Marketing Ltd. info@pixangle.com Tel: 0208 870 2118
 This floor plan has been prepared for the purpose of illustration only in accordance with the latest RICS code of measuring practice and is not to scale. All measurements and areas are approximate and whilst every effort has been made to ensure the accuracy of the plan contained here, no responsibility is taken for any error, omission or misstatement.



Edwardian bay fronted terraced house | Three bedrooms - One bathroom | 1001 Sq' - 92.99 SqM | EPC rating D | Close to Southfield Primary | Bedford Park borders



hortonandgarton.co.uk
 Sales 020 3989 6464
 Lettings 020 3989 5454

161 Chiswick High Road, London, W4 2DT