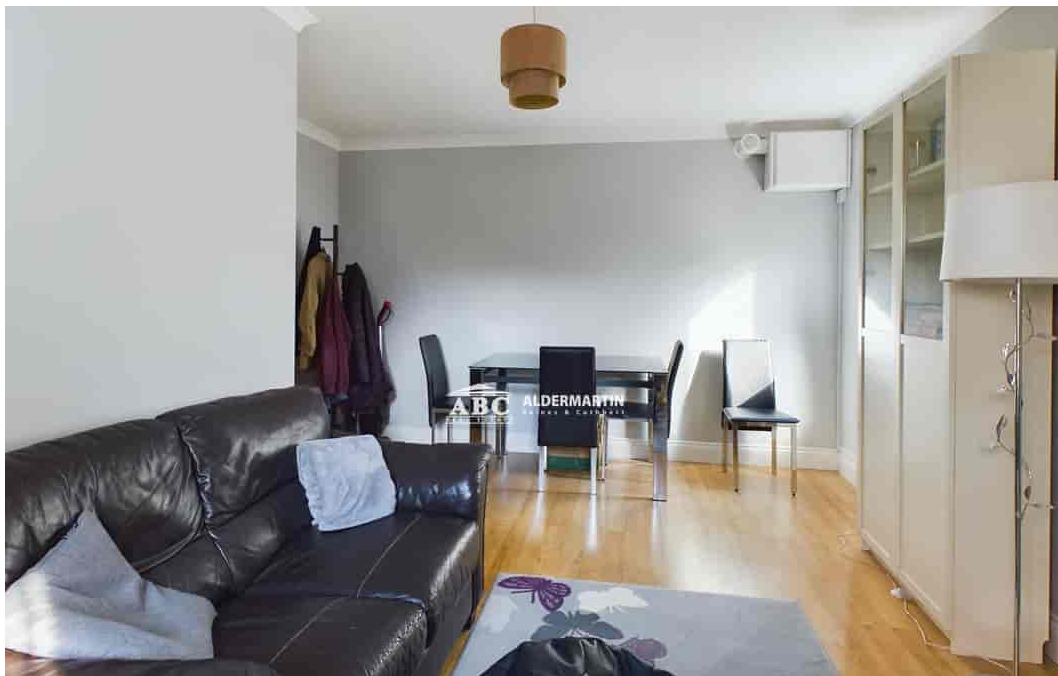


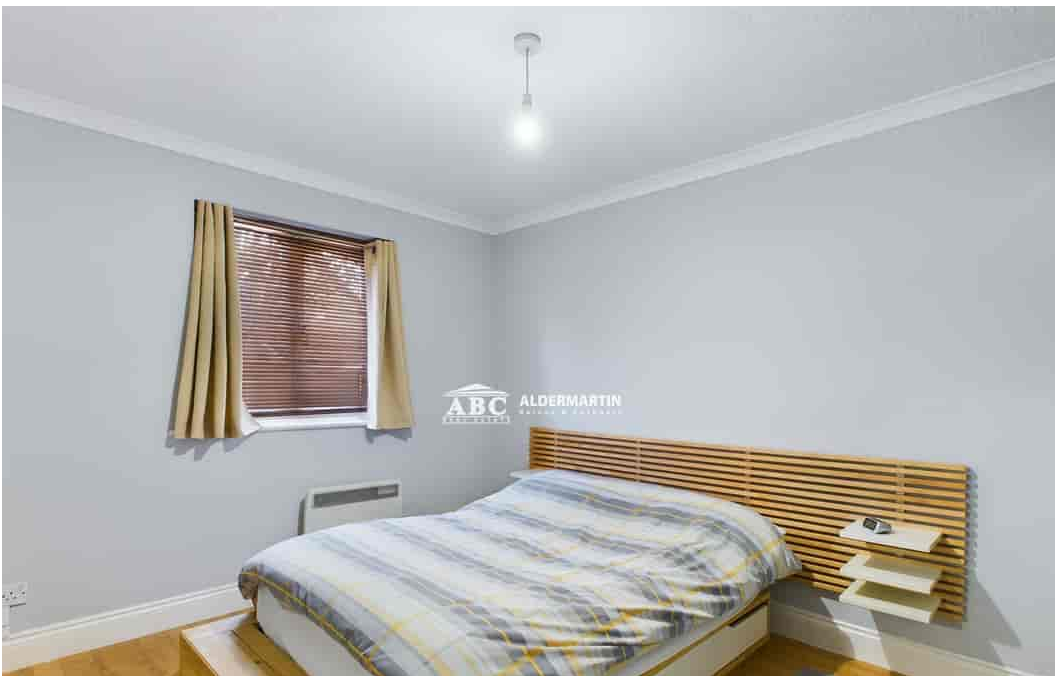


**Vicarage Close, Northolt. UB5 5EG**

**£259,950  
Leasehold**







- GROUND FLOOR
- LARGE ONE BEDROOM FLAT
- 175 YEARS LEASE

- PARKING
- QUIET LOCATION
- PERFECT INVESTMENT OR FIRST TIME PURCHASE

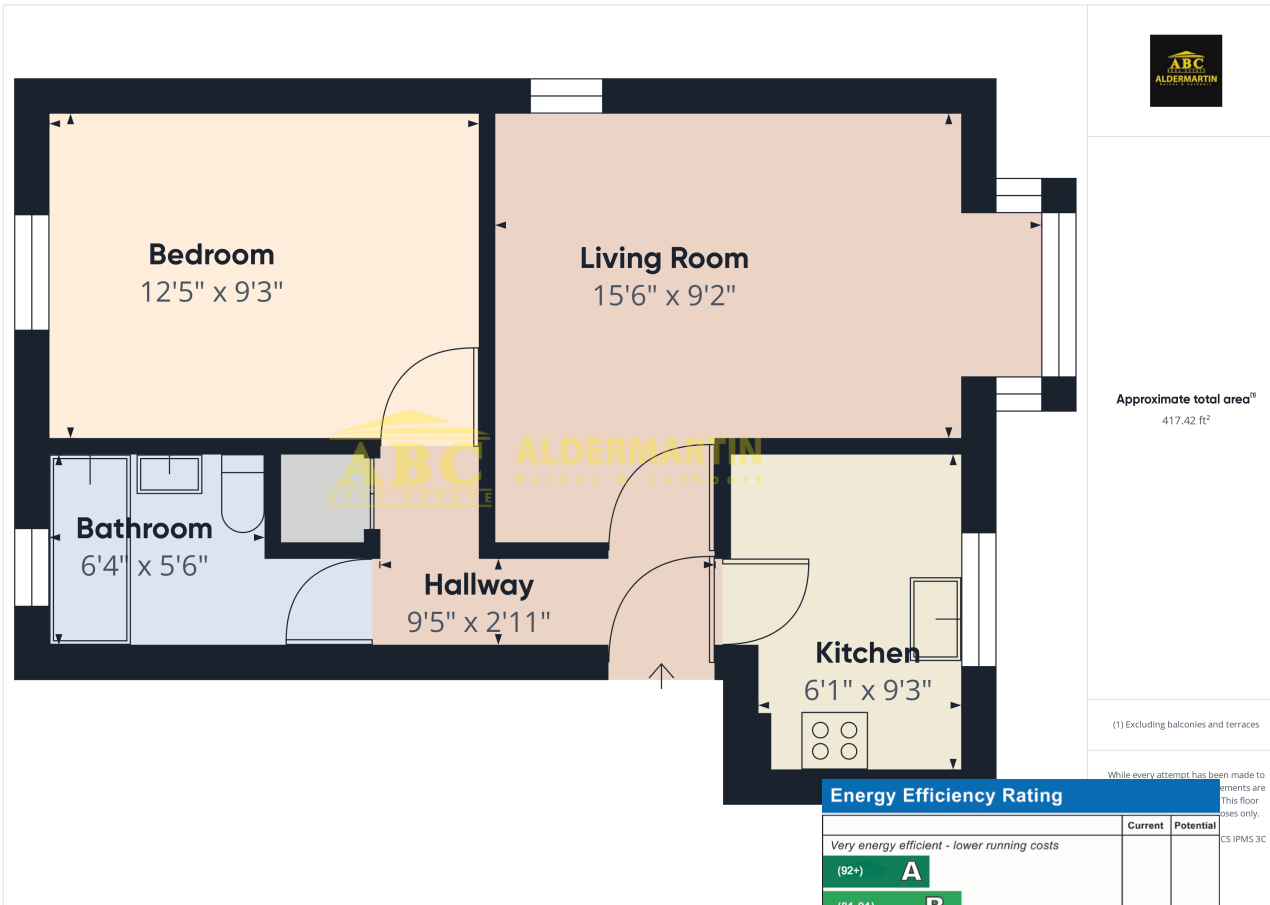
- EPC RATING "E" - COUNCIL TAX BAND C
- SEPARATE FITTED KITCHEN
- GOOD DECORATIVE ORDER

This spacious one bedroom ground floor flat is set in a quiet location.

It comes with a 175 year Lease, and is offered in very good decorative condition.

It comprises a large bedroom, a bright living room, a separate kitchen, and a bathroom.

There is plenty of parking available for residents and visitors.



Energy Efficiency Rating

	Current	Potential
Very energy efficient - lower running costs		
(92+) <b>A</b>		
(81-91) <b>B</b>		
(69-80) <b>C</b>		75
(55-68) <b>D</b>		
(39-54) <b>E</b>	47	
(21-38) <b>F</b>		
(1-20) <b>G</b>		
Not energy efficient - higher running costs		
England, Scotland & Wales	EU Directive 2002/91/EC	

While every attempt has been made to ensure the accuracy of the information provided, the information is for general information only. CS IPM5 3C



Edgware  
02086 214 000  
office@abcestates.co.uk

