



**Grasmere Crescent
Shiney Row
Houghton le Spring
Tyne and Wear
DH4 7DG**

Offers in Excess of £88,000

bettermove

Grasmere Crescent Houghton le Spring

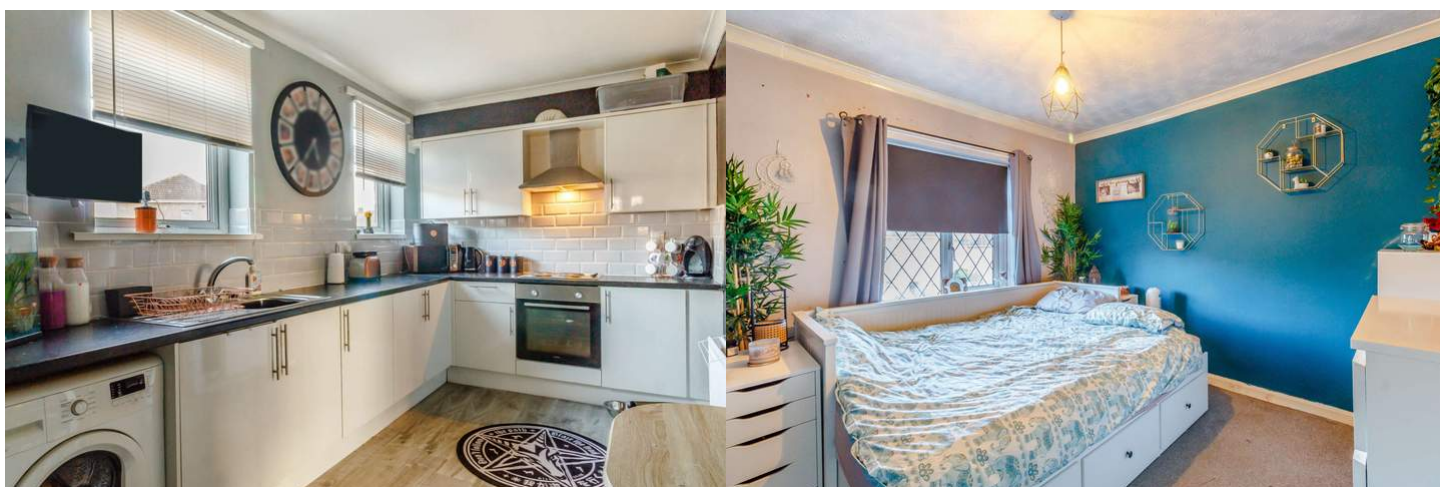
Bettermove are delighted to welcome to the market this charming three bedroom semi-detached house in Shiney Row, available with no forward chain.

The property benefits from double glazing, gas central heating throughout and has off road parking to the rear.

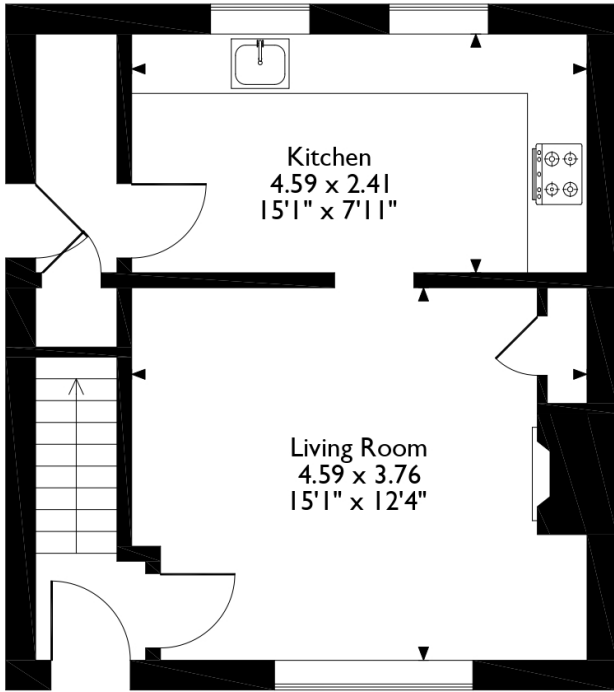
The interior of this beautifully-presented property consists of a spacious living room and modern fitted kitchen on the ground floor. The first floor comprises three bedrooms and the family bathroom. The exterior boasts an enclosed rear garden with lawn and patio areas, perfect for enjoying the summer months.

Situated in the popular village of Shiney Row, the property is close to a number of local amenities, including shops, supermarkets, restaurants and pubs. Transport connections can be found from the A182, A690, A1(M) with rail links from Chester-le-Street and Sunderland train stations.

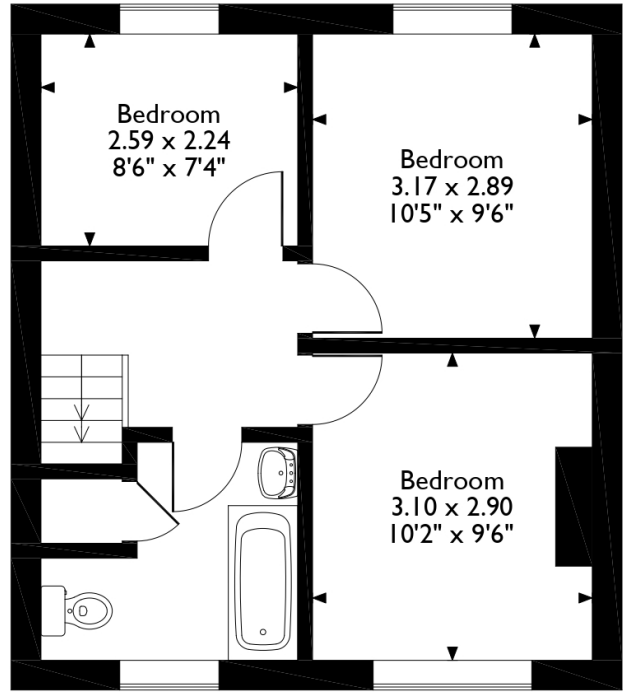
This exciting opportunity is not to be missed! All enquiries can be made through Bettermove on 0330 004 0050.



19 Grasmere Crescent, Shiney Row, Houghton Le Spring

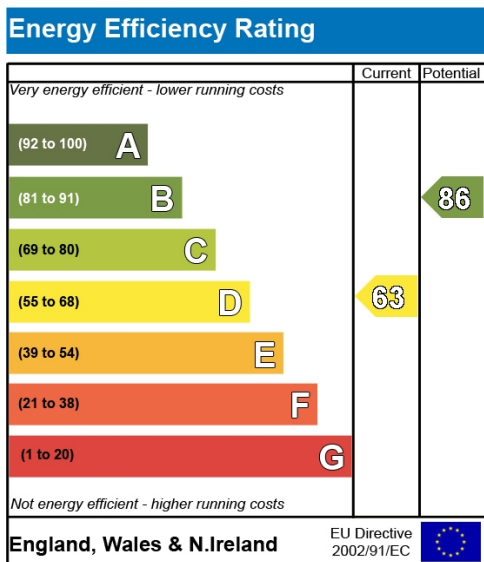


Ground Floor



First Floor

Please note that the location of doors, windows and other items are approximate and this floorplan is to be used for illustrative purposes only. Unauthorized reproduction is prohibited.





20-22 Bridge End, Leeds, LS1 4DJ
t: 0330 004 0050 e: hello@bettermove.co.uk
www.bettermove.co.uk