



11, Selwyn Crescent

Hatfield,
Hertfordshire, AL10 9NL
£775,000

country
properties

Spacious Four/Five-Bedroom Home set within the Desirable Ellenbrook neighbourhood, this generous and versatile home offers four bedrooms plus a ground floor bedroom/study with its own en-suite, making it ideal for growing families, multi-generational living or hybrid working. The ground floor opens into a welcoming hallway leading to a bright living room, a spacious 18ft kitchen/dining area, and a lovely conservatory that overlooks the private rear garden — perfect for both family life and entertaining. The flexible guest bedroom/study is ideal for visitors, older relatives, or as a quiet work-from-home space, and benefits from its own shower room. Upstairs, you'll find three well-sized bedrooms and a modern family bathroom on the first floor. The entire second floor is dedicated to the principal bedroom suite, complete with fitted storage and en-suite — a calm and private retreat. Additional benefits include an integral garage, off-street parking, and a peaceful residential setting just a short walk from local schools, green open spaces, and excellent road and rail links. This is a wonderfully adaptable and well-maintained home in one of Hatfield's most sought-after areas. Early viewing is essential.

- Sought-after Ellenbrook Location
- Large Semi Detached Family Home
- Ground floor fifth bedroom/study with en-suite
- Private Rear Garden
- Principal Bedroom Top Floor Suite
- Conservatory Leading onto Garden
- Driveway with Ample Parking
- Large Kitchen/Diner



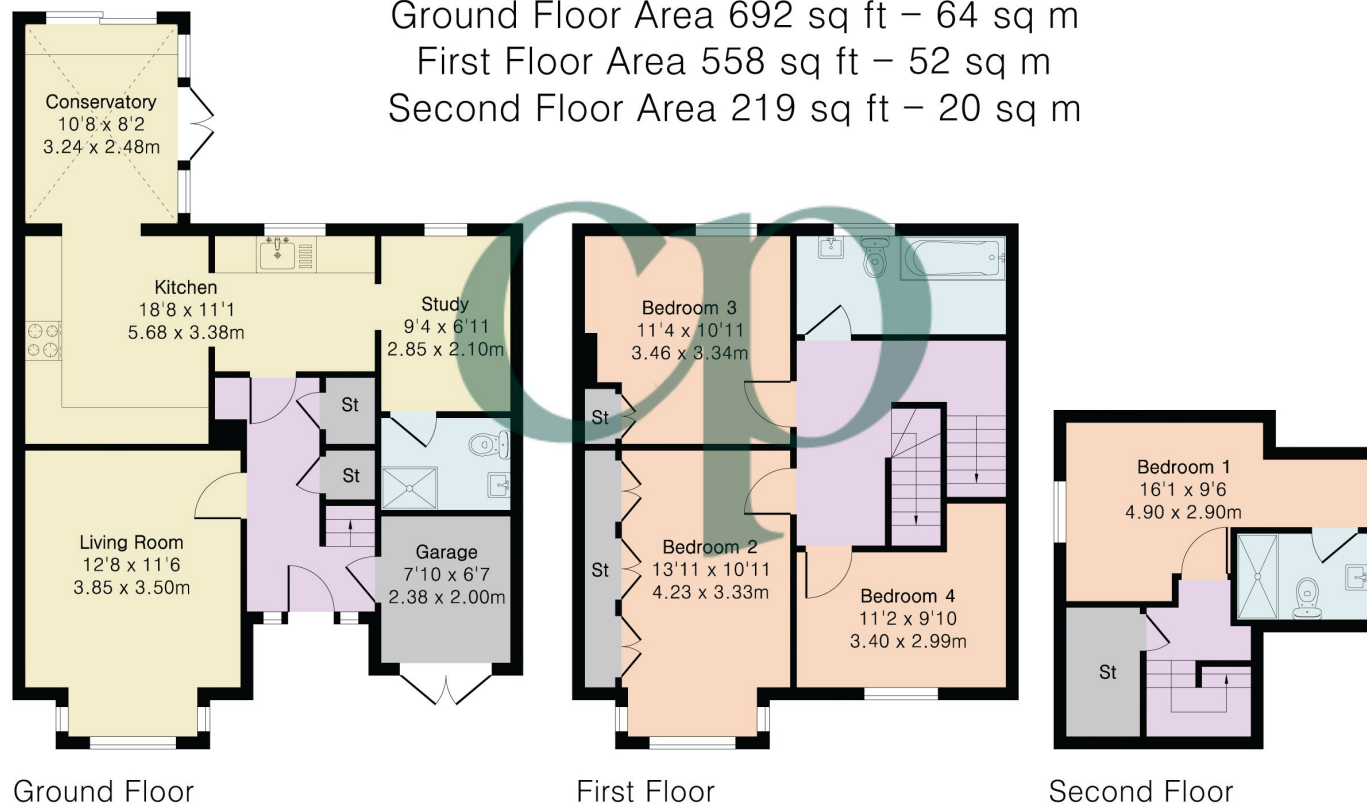


Approximate Gross Internal Area 1469 sq ft - 136 sq m

Ground Floor Area 692 sq ft – 64 sq m

First Floor Area 558 sq ft – 52 sq m

Second Floor Area 219 sq ft – 20 sq m



All measurements are approximate and quoted in metric with imperial equivalents and for general guidance only and whilst every attempt has been made to ensure accuracy, they must not be relied on. The fixtures, fittings and appliances referred to have not been tested and therefore no guarantee can be given and that they are in working order. Internal photographs are reproduced for general information and it must not be inferred that any item shown is included with the property. For a free valuation, contact the numbers listed on the brochure.

Viewing by appointment only

Country Properties | 7, The Broadway | AL9 5BG

T: [01707 271450](tel:01707271450) | E: hatfield@country-properties.co.uk

www.country-properties.co.uk

country
properties