



14 Greenbanks, Lyminge, Folkestone, Kent, CT18 8HG

EPC Rating =

Guide Price £450,000





An extended light and bright semi detached bungalow in a favoured cul-de-sac location. The accommodation comprises: Entrance porch, welcoming hallway, living room with fireplace fitted with impressive woodburning stove and open plan to dual aspect sun room providing an abundance of natural light and views over the garden, spacious kitchen/dining room with door to rear lobby, bedroom one with ensuite cloakroom/WC, two further bedrooms and shower room/WC. Lovely gardens laid to lawn with paved seating area, flower borders and unique area of railway cutting to the end of the garden. Garage and parking. EPC Rating: TBC



Guide Price £450,000

Tenure Freehold

Property Type Detached Bungalow

Receptions 2

Bedrooms 3

Bathrooms 1

Heating Gas

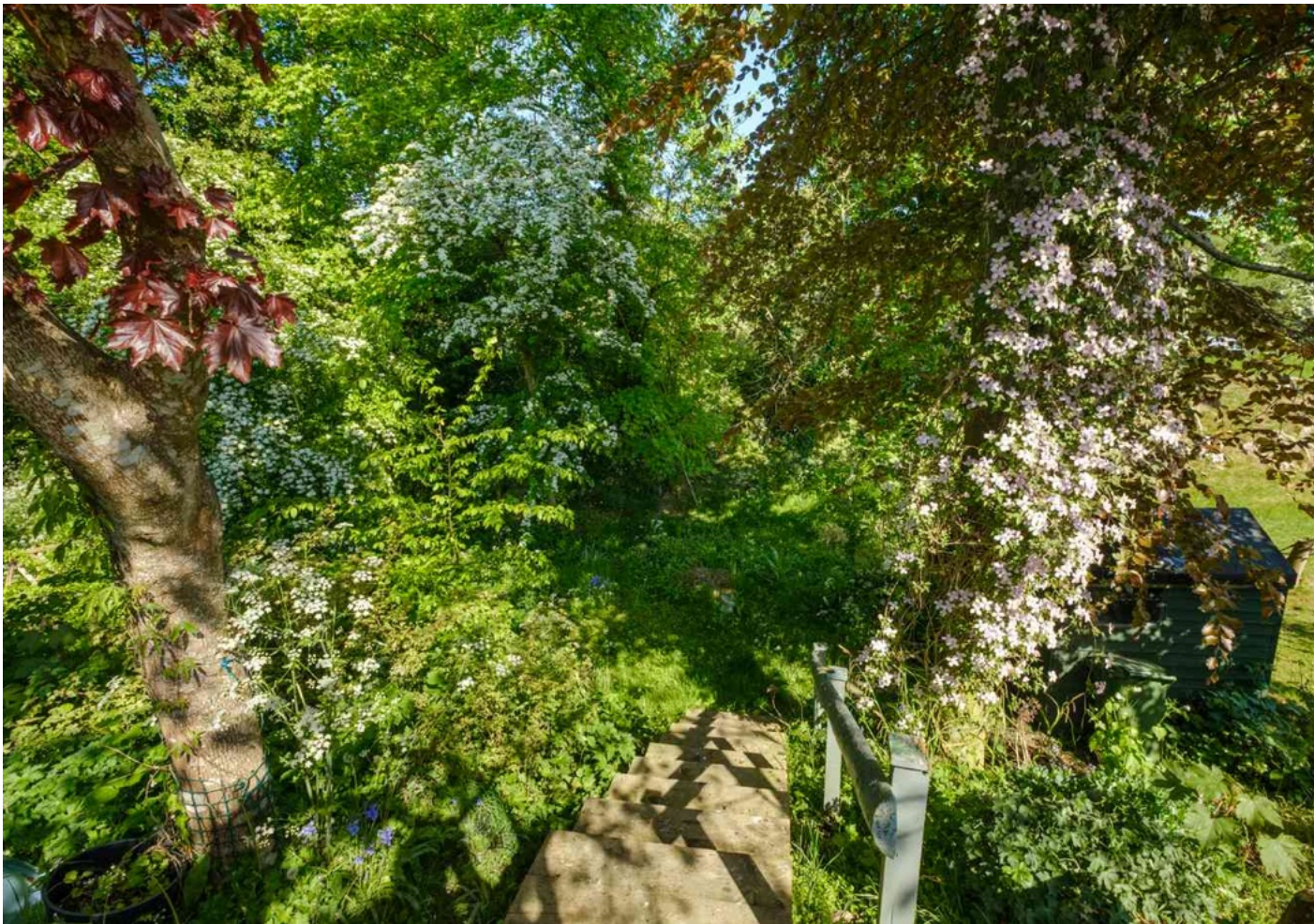
EPC Rating TBC

Council Tax Band D

Folkestone And Hythe District Council

Situation

The property is situated in a popular cul de sac 'Greenbanks' in The village of Lyminge is nestled in the spectacular North downs it has a wonderful semi-rural feel, with an abundance of beautiful walks nearby and benefitting from the amenities the village has to offer. There is a Post Office & Convenience Shop, hairdressers, two Doctors surgeries, Chemist and Primary School. The village offers various clubs and societies and there are good bus links to both Canterbury and Folkestone. Lyminge is a thriving community with lots of activities for all ages. In the nearby town of Folkestone there are mainline railway stations with High Speed services to London.



The accommodation comprises

Entrance porch

Entrance hall

Living room

16' 11" x 16' 6" (5.16m x 5.03m)

Garden room

16' 10" x 8' 10" (5.13m x 2.69m)





Kitchen/Breakfast room

20' 6" x 11' 6" (6.25m x 3.51m)

Bedroom one

10' 2" x 8' 8" (3.10m x 2.64m)

Ensuite WC

Bedroom two

11' 6" x 9' 11" (3.51m x 3.02m)

Bedroom three

10' 3" x 8' 11" (3.12m x 2.72m)

Shower Room/WC

Outside

Garage

27' 5" x 8' 4" (8.36m x 2.54m)

Gardens

Front and rear gardens laid to lawn with unique area of railway cutting to the end of the garden.







Approximate Gross Internal Area = 98 sq m / 1057 sq ft
Garage = 21 sq m / 229 sq ft

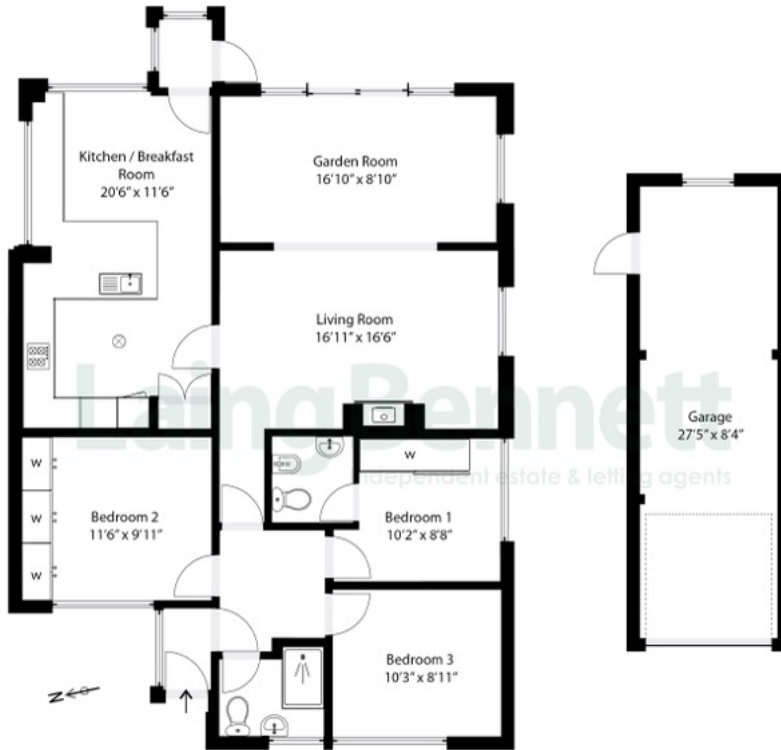


Illustration for identification purposes only. Measurements are approximate. Dimensions given are between the widest points.
Not to scale. Outbuildings are not shown in actual location.
© Unauthorised reproduction prohibited - chriskemps@hotmail.com



Need to book a viewing?

If you would like to book a viewing please contact our office on **01303 863393** or email **sales@laingbennett.co.uk**

See all our properties at



www.laingbennett.co.uk

The Estate Office
8 Station Road
Lyminge
Folkestone
Kent
CT18 8HP



These property details are intended to give a fair description and give guidance to prospective Purchaser/Tenant. They do not constitute an offer or contract of Sale/Tenancy and all measurements are approximate. While every care has been taken in the preparation of these details neither Laing Bennett Ltd nor the Vendor/ Landlord accept any liability for any statement contained herein. Laing Bennett Ltd has not tested any services, appliances, equipment or facilities, and nothing in these details should be deemed to be a statement that they are in good working order or that the property is in good structural condition or otherwise. We advise all applicants to commission the appropriate investigations before Exchange of Contracts/entering into a Tenancy Agreement. It should not be assumed that any contents/furnishing, furniture etc. photographed are included in the Sale/Tenancy, nor that the property remains as displayed in the photographs. No person in the employment of Laing Bennett Ltd has authority to make or give any representation or warranty whatever in relation to this property.