



Tempest Avenue, Potters Bar, Hertfordshire, EN6

£640,000

- **EXCEPTIONAL FAMILY HOME**
- **OPEN PLAN LIVING.**
- **3 DOUBLE BEDROOMS**
- **FANTASTIC GARDEN AND SPACE**
- **15 MINS WALK TO POTTERS BAR MAINLINE TRAIN STATION**
- **LARGER THAN AVERAGE 3 BED SEMI**
- **IDEAL WORK FROM HOME - ENVIRONMENT**
- **DRIVEWAY AND SIDE PARKING**
- **SCHOOLS AND HIGH STREET SHOPS ON DOORSTEP**

108, High Street, Potters Bar, EN6 5AT

01707 245 555

www.home-counties.com

Tempest Avenue, Potters Bar, Hertfordshire, . EN6

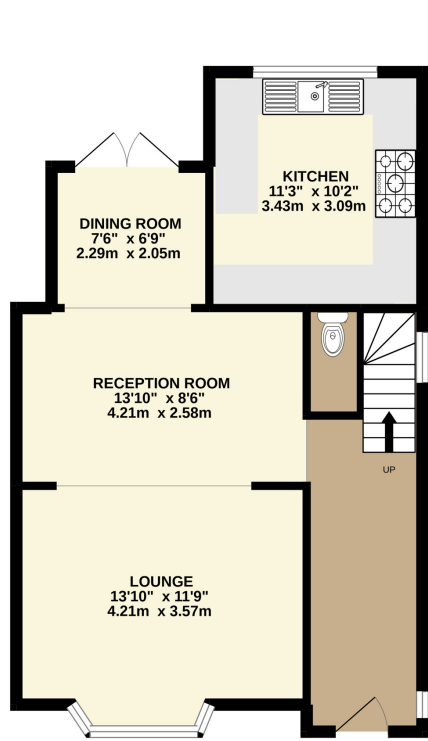
£640,000

Perfect family living on a quiet turning.

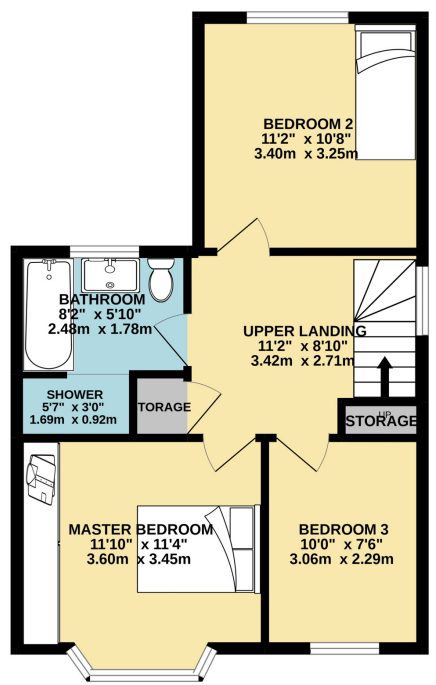
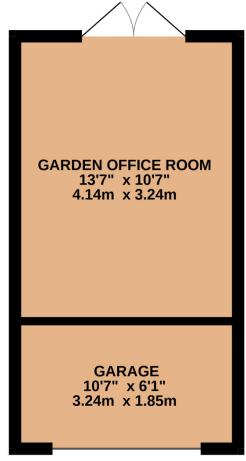
Tastefully decorated larger than average 3 bed semi benefiting from downstairs open plan living and double storey rear extension with 3 double bedrooms and plenty of adaptable family space.

Large landing allowing flexible use currently used as home office / homework station with potential to extend into loft area STPP.

GROUND FLOOR
754 sq.ft. (70.0 sq.m.) approx.



1ST FLOOR
492 sq.ft. (45.8 sq.m.) approx.



TOTAL FLOOR AREA : 1246 sq.ft. (115.8 sq.m.) approx.

Whilst every attempt has been made to ensure the accuracy of the floorplan contained here, measurements of doors, windows, rooms and any other items are approximate and no responsibility is taken for any error, omission or mis-statement. This plan is for illustrative purposes only and should be used as such by any prospective purchaser. The services, systems and appliances shown have not been tested and no guarantee as to their operability or efficiency can be given.
Made with Metropix ©2022

