



**Dover Road
Sandwich
Kent
CT13 0DA**

Offers In Excess Of £441,000

bettermove

Dover Road Sandwich

Bettermove are proud to present this 1 bedroom detached bungalow in Sandwich.

The property benefits from double glazing, gas central heating throughout and has off street parking available.

The council tax band is C.

The interior of this beautifully presented property comprises a spacious living room, fitted kitchen, 1 bedroom and the bathroom with fully fitted steam room. There is also vast space in the loft. The exterior boasts a private rear garden, perfect for enjoying the summer months.

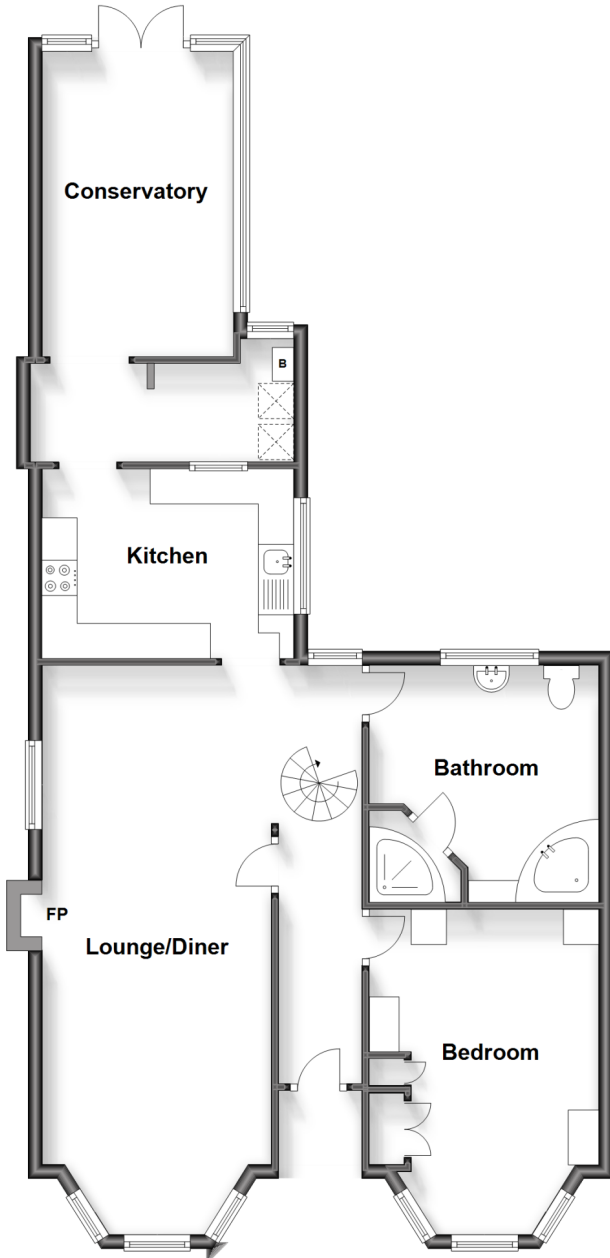
Located in the popular town of Sandwich, the property is close to a range of amenities, including shops, supermarkets, restaurants and pubs. Excellent transport connections can be found from the A256, Sanddwich train station and local bus routes.

This exciting opportunity should not be missed! All enquiries can be made through Bettermove on 0330 004 0050.



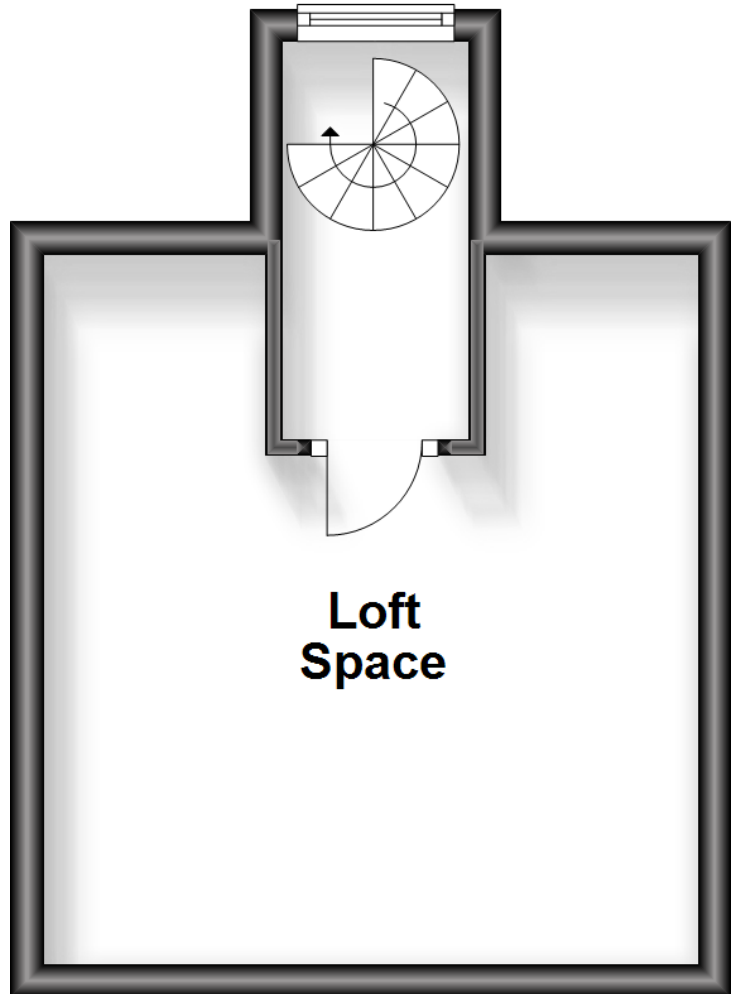
Ground Floor

Approx. 86.1 sq. metres (927.1 sq. feet)



Loft

Approx. 20.2 sq. metres (217.7 sq. feet)



Energy Efficiency Rating		
	Current	Potential
<i>Very energy efficient - lower running costs</i>		
(92+) A		
(81-91) B		
(69-80) C		
(55-68) D		64
(39-54) E	44	
(21-38) F		
(1-20) G		
<i>Not energy efficient - higher running costs</i>		
England, Scotland & Wales	EU Directive 2002/91/EC	



20-22 Bridge End, Leeds, LS1 4DJ
t: 0330 004 0050 e: hello@bettermove.co.uk
www.bettermove.co.uk