

Collingbourne Road, Shepherd's Bush, W12

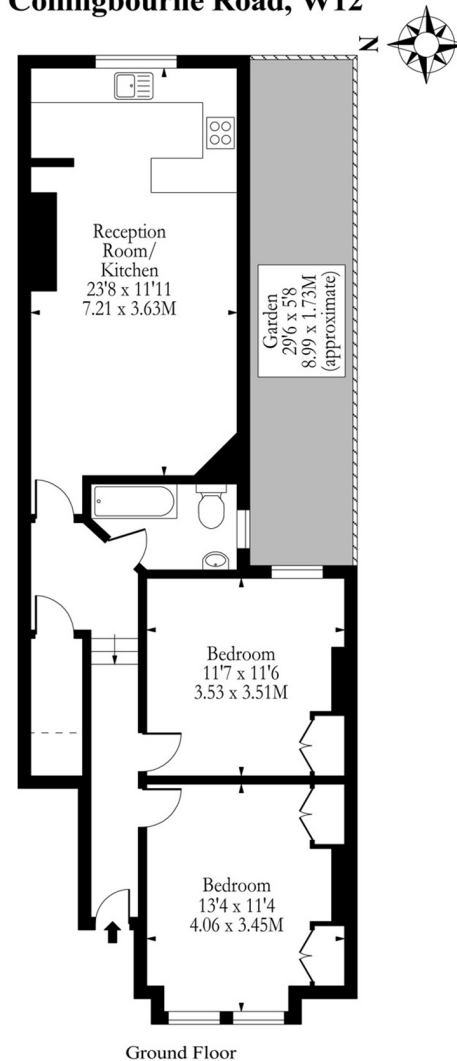
Flat | 2 bedrooms |

To Let £425 p/w

**horton  
and garton**



Collingbourne Road, W12



Approx Gross Internal Area 745 Sq Ft - 69.21 Sq M

Illustration Purposes Only

Whilst every attempt has been made to ensure the accuracy of the floor plan contained here, measurements of doors, windows, rooms and any other items are approximate and no responsibility is taken for any errors, omissions or mis-statements. The plan is for illustrative purposes only, is not to scale and should be used as such by any prospective purchaser.



Edwardian maisonette | Two double bedrooms | Furnished | Private patio garden | EPC rating C |  
Shepherds Bush Location

Our membership of the Association of Residential Letting Agents (ARLA), National Association of Estate Agents (NAEA), the National Federation of Property Professionals (NFOPP), and the Property Ombudsman Scheme - Sales and Lettings, act as a guarantee to our customers of our rigorous standards.



horton  
and garton

Horton and Garton LTD, 172 King Street, Hammersmith, W6 0QU | [www.hortonandgarton.co.uk](http://www.hortonandgarton.co.uk) | sales 020 8819 0510 | Lettings 020 88190511