



**19, Sydney Street**  
Northwich CW8 4AP

**£875**

**[www.westates.co.uk](http://www.westates.co.uk)**  
**01606 331784**



- Two Reception Rooms
- Kitchen & Utility Room
- Two Double Bedrooms
- Large Bathroom
- Good Size Gardens
- On Road Parking

### Description

A well proportioned, bay fronted terraced house, occupying a favoured locality close to Greenbank Railway Station. The property comprises: Entrance hall, lounge, dining room, kitchen and utility room on the ground floor and landing, two double bedrooms and a large bathroom on the first floor. Outside there is a good size rear garden and parking is available on the road. Available unfurnished, restrictions apply.



**Location**  
**Tenure**

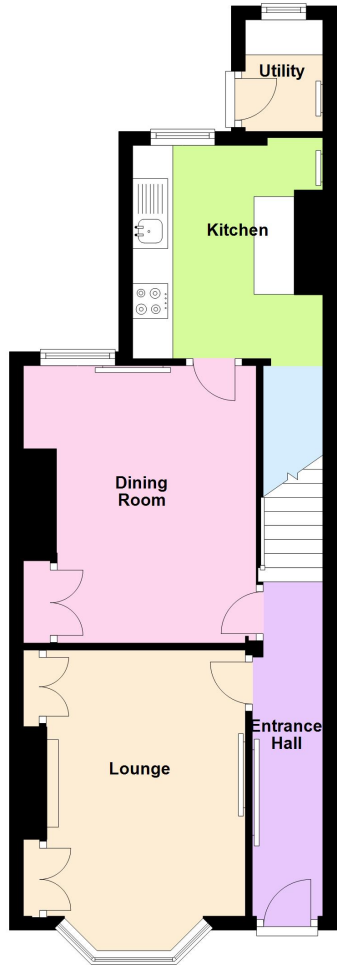
**EPC Rating:**

**Important Notes**  
Type Here



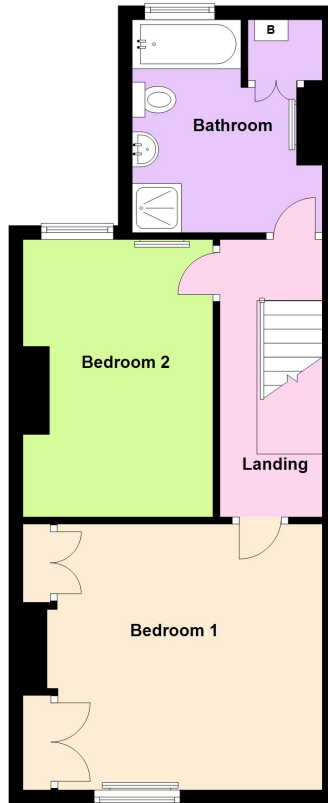
### Ground Floor

Approx. 44.3 sq. metres (477.2 sq. feet)



### First Floor

Approx. 42.1 sq. metres (453.3 sq. feet)



Total area: approx. 86.4 sq. metres (930.5 sq. feet)

