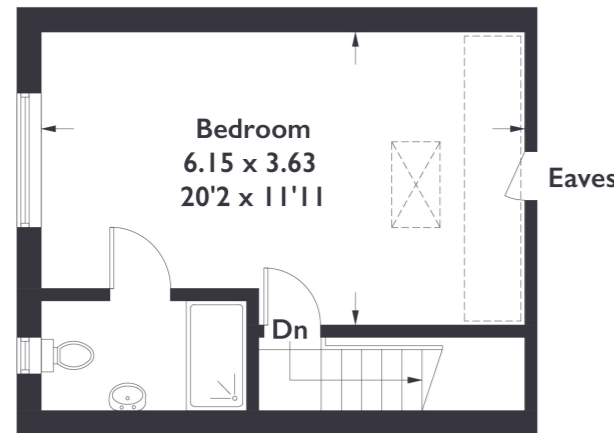


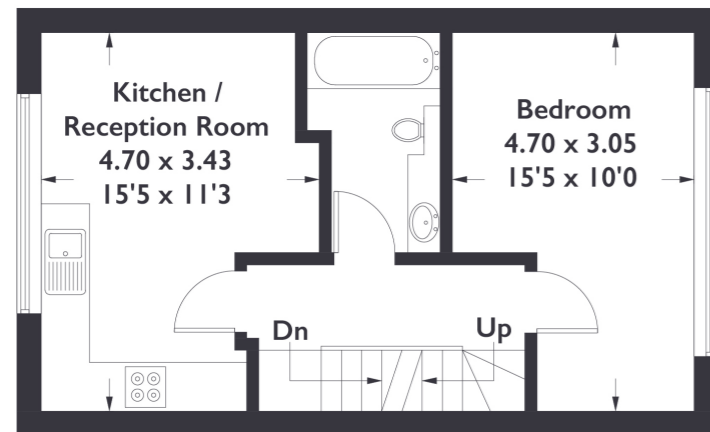
Burnham Way, W13

Approximate Gross Internal Area = 71.9 sq m / 774 sq ft



Second Floor

= Reduced Headroom



First Floor



Ground Floor

Measured in accordance with RICS Code of Measuring Practice. To be used for identification and guidance purposes only. Whilst every care is taken in the preparation of this plan, please check all dimensions, shapes and compass bearings before making any decisions reliant upon them.



2 BEDROOM FLAT

Burnham Way, W13

£500,000

This two bedroom split level apartment has been extended and refurbished by the current owner. Designed with space in mind, it's perfect for first time buyers and investors.

With two double bedrooms, open plan kitchen / living space, off-street parking and private south facing garden, it's the perfect first time buy.

FEATURES

- Driveway Parking
- Two Double Bedrooms
- Close to Northfields & Boston Manor Tube
- Open Plan Kitchen/Living
- Quiet No Through Road
- Chain Free

Burnham Way is a charming residential street located in Northfields. Burnham Way is a charming residential street located in Northfields.

Situated in close proximity to Boston Manor Tube station, it offers excellent transportation links for residents and visitors alike.

The street enjoys a peaceful atmosphere while being conveniently close to various amenities, including shops, restaurants, and green spaces.

One notable landmark nearby is Fielding Primary School, a highly regarded educational institution known for its commitment to academic excellence and nurturing environment. Families living on Burnham Way can benefit from the school's close proximity, making it an ideal location for those seeking a vibrant community and a high standard of education for their children.

EPC Rating: tbc

