

44 Sidney Street

Folkestone
CT19 6HG

£220,000 FREEHOLD

FOR SALE WITH BURNAP + ABEL... Nestled on Sidney Street in the vibrant coastal town of Folkestone, this beautifully refurbished two-bedroom terraced home offers an exceptional blend of modern elegance and everyday comfort. Finished to a high standard throughout, the property is ideal for first-time buyers, downsizers, or investors seeking a turnkey opportunity with no onward chain. Upon entering, you are welcomed into a stylish and inviting lounge, thoughtfully designed to provide a relaxing yet contemporary living space. This flows seamlessly into a separate dining room—perfect for entertaining guests or enjoying family meals in a more formal setting. The sleek, modern kitchen has been carefully updated, offering both functionality and aesthetic appeal, with ample workspace and storage to suit today's lifestyle. Upstairs, the property boasts two well-proportioned bedrooms, each tastefully presented to create calm and restful retreats. The family bathroom has been finished to a high specification, featuring modern fittings and a clean, sophisticated design. Externally, the home benefits from a private rear garden—an ideal space for outdoor dining, relaxation, or gardening. Further enhancing its appeal, the property is offered with no chain, allowing for a smooth and straightforward purchase. Conveniently located within walking distance of Folkestone Central station, it provides excellent transport links, making it a superb choice for commuters. This is a rare opportunity to acquire a fully refurbished home in a sought-after location, ready to move into and enjoy from day one.



Entrance Hall

Lounge

12' 8" x 10' 11" (3.86m x 3.33m)

Dining Room

11' 9" x 9' 1" (3.58m x 2.77m)

Kitchen

13' 2" x 7' 5" (4.01m x 2.26m)

First Floor Landing

Bedroom One

14' 2" x 11' 8" (4.32m x 3.56m)

Bedroom Two

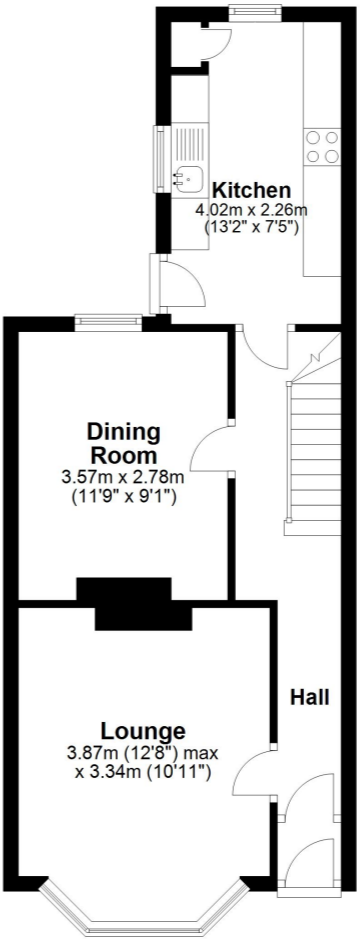
11' 9" x 9' 0" (3.58m x 2.74m)

Bathroom

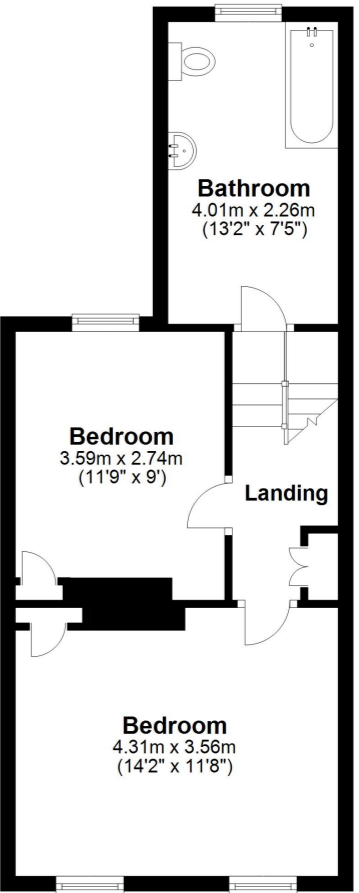
13' 2" x 7' 5" (4.01m x 2.26m)

Rear Garden

Ground Floor
Approx. 40.8 sq. metres (438.8 sq. feet)



First Floor
Approx. 40.3 sq. metres (434.3 sq. feet)



Total area: approx. 81.1 sq. metres (873.1 sq. feet)

