

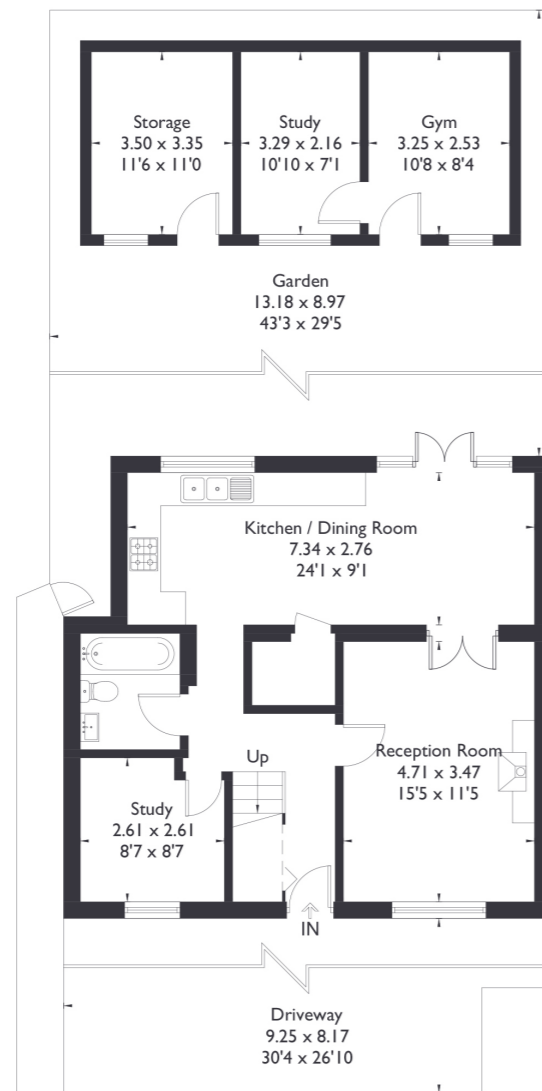
Clayton Crescent Brentford, TW8

Approximate Floor Area = 104.7 sq m / 1127 sq ft
Outbuilding = 24.9 sq m / 268 sq ft
Total = 129.6 sq m / 1395 sq ft



First Floor

= Reduced head height below 1.5m



Ground Floor



3 BEDROOM HOUSE

Clayton Crescent, TW8

£765,000

This delightful three bedroom home is ideally located, making it perfect for both families and professionals. The property features a spacious open plan kitchen and living area, perfect for modern living and entertaining, along with a separate reception room for added flexibility. The kitchen opens to a beautifully landscaped garden, bathed in sunlight, providing a peaceful outdoor retreat.

FEATURES

- Three Bedrooms
- Two Bathrooms
- Open Plan Kitchen/Dining
- Landscaped Garden
- Off-Street Parking
- Mount Carmel Catholic Primary School
- EPC Rating D



3 BEDROOM HOUSE

Clayton Crescent, TW8

Upstairs, you'll find three generously sized bedrooms, each large enough to accommodate a double bed, ensuring comfort and space for all.

The home is filled with natural light throughout, creating a warm and inviting atmosphere. A convenient downstairs bathroom adds to the property's practicality.

Located within the catchment area for Mount Carmel Catholic Primary School, the home is also just a 10-minute walk from South Ealing and Brentford stations, making it ideal for commuters. Additionally, its proximity to the Great West Road offers excellent access for those needing to drive into London.

EPC Rating .D

