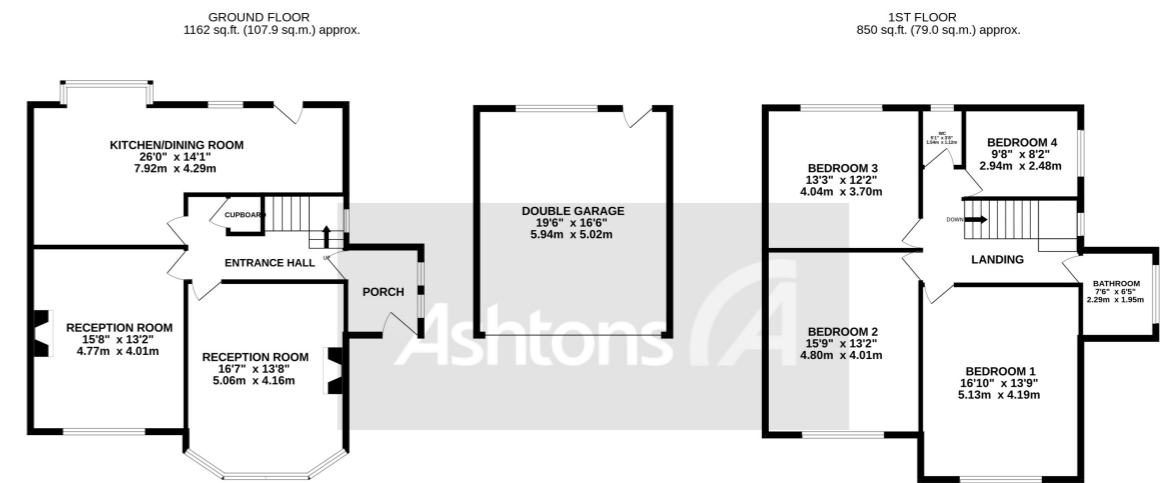
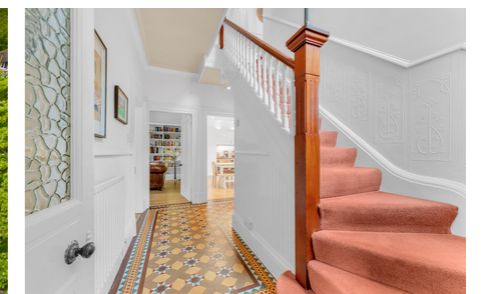


Marlborough Crescent, Stockton Heath, £800,000



TOTAL FLOOR AREA: 2012 sq.ft. (186.9 sq.m.) approx.
 Whilst every attempt has been made to ensure the accuracy of the floorplan contained here, measurements of doors, windows, rooms and any other items are approximate and no responsibility is taken for any error, omission or mis-statement. This plan is for illustrative purposes only and should be used as such by any prospective purchaser. The services, systems and appliances shown have not been tested and no guarantee as to their operability or efficiency can be given.
 Made with Metropix ©2023



Situated within the Grappenhall conservation area this Edwardian home is located down one of the area's most sought-after private roads. The accommodation has a striking mix of original features including cornices, fireplaces, sash windows, and tiles whilst the house mixes high-quality fixtures and fittings seamlessly with the older aspects of the property to create a truly amazing space. The porch proudly displays the restored Milton tiled design flooring complemented beautifully by the stained-glass windows, it creates a wonderful space for coats and boots and sets the tone for the whole property. The

[See more of this house at ashtons.net](https://www.ashtons.net)

x 4 x 1

