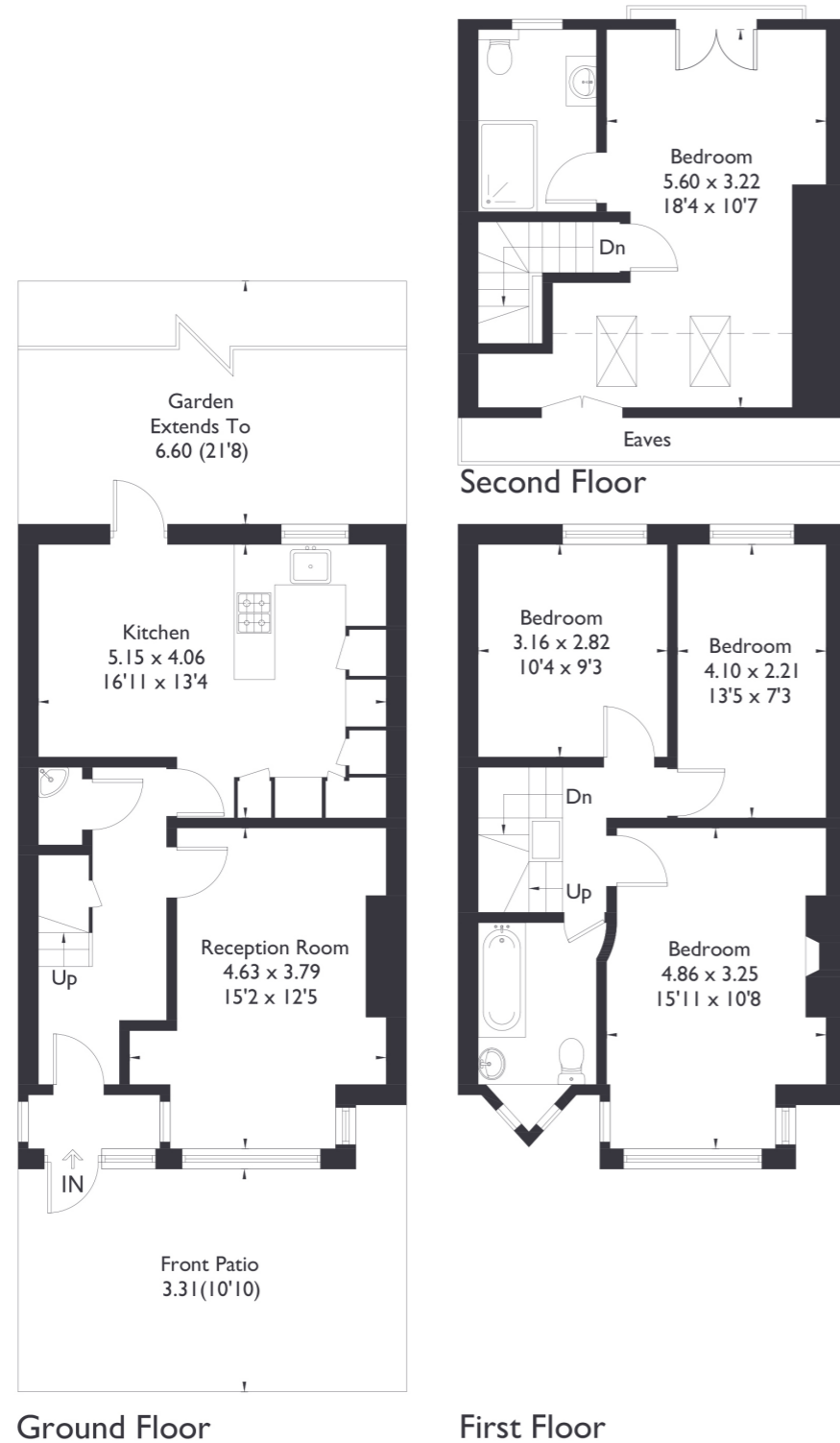


Dudley Gardens, W13

Approximate Floor Area = 116.4 sq m / 1253 sq ft



4 BEDROOM HOUSE

Dudley Gardens, W13
£925,000

Situated on one of Northfields' most sought-after streets, just a short stroll from Walpole and Lammas parks and the local shops, this elegant Edwardian home boasts a prime location near Northfields tube. With four spacious double bedrooms, a bright open plan kitchen/diner, and a charming garden, it's an ideal retreat for a growing family.

Lovingly and skilfully looked after, it is the perfect family home.

FEATURES

- Four Bedrooms
- Three Bathrooms
- Separate Reception Room
- Northfields Amenities
- Fielding Primary School
- Northfields Station
- EPC Rating D



4 BEDROOM HOUSE

Dudley Gardens, W13

A wide porch opens to a smart front door. Inside, wooden floors and high ceilings greet you.

To the right is the living room, with ornate cornicing and a large bay window, giving the space a grand, elegant feel. Past the under-stairs storage and WC, the bright kitchen/diner awaits, with floor-to-ceiling glass doors leading to the garden. The wall between the kitchen and dining area has been removed for an open, social space, featuring a sleek, white horseshoe-shaped kitchen.

Outside, the paved garden has rear access. Upstairs, the family bathroom is finished in stone tiles, with three double bedrooms on the first floor. The master bedroom on the second floor offers skyline views, storage, and a stylish en-suite.

EPC Rating D.

