



Glenhill House, Lichfield Grove, London, N3

£2,000
pcm



Glenhill House, Lichfield Grove, London, N3

A well presented and generously proportioned one bedroom garden apartment located in the heart of Finchley Central. Benefits include a private entrance, spacious reception room with dining space and a large bedroom.

Lichfield Grove is located just 0.7 miles from Finchley Central station (Northern Line) with the local amenities and cafes found on Ballards Lane also close by.

Features

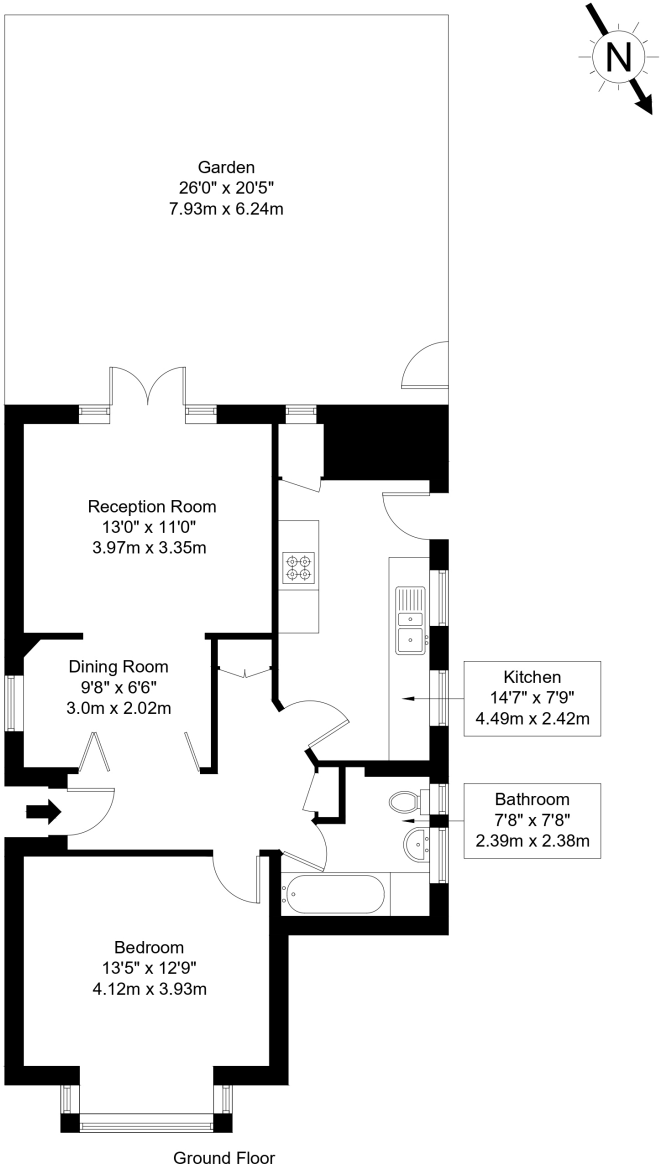
- Recently Renovated
- One Bedroom
- Garden Apartment
- 0.7 miles From Finchley Central Station
- Situated In The Heart Of Finchley Central
- Offered Unfurnished
- Spacious Reception Room With Dining Space
- Large Bedroom
- Available From 6th March



Glenhill House,
Lichfield Grove,
London, N3

Lichfield Grove, N3 2JR

Approx Gross Internal Area = 61.21 sq m / 659 sq ft



Ref :

Copyright

**B L E U
P L A N**

The Floor plan is not to scale and measurements and areas shown are approximate and therefore should be used for illustrative purposes only. The plan has been prepared in accordance with the RICS code of Measuring Practice and whilst we have confidence in the information produced it must not be relied on. Maximum lengths and widths are represented on the floor plan. If there is any aspect of particular importance, you should carry out or commission your own inspection of the property.
Copyright @ BLEUPLAN