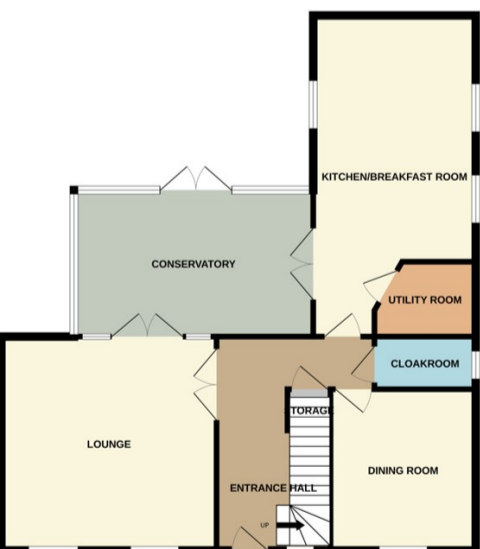




Bourne

£390,000



*****DETACHED SPACIOUS FAMILY HOME***** Rosedale are delighted to offer this large modern property located within easy access to schools and local amenities. This property is one of the largest on the development of Elsea Park and has a refitted 22' kitchen/breakfast, conservatory, two reception rooms, utility room, and cloakroom. Upstairs there are four double bedrooms, ensuite to main bedroom and a family bathroom. Outside there is a tarmac drive with parking for three vehicles, leading to a single garage. The front garden has been landscaped and has a well maintained fully enclosed rear garden. To fully appreciate this family home viewings are highly recommended. EPC energy rating C/Council tax band E.