



£350,000 Leasehold



35 Hudson Road, Bexleyheath, Kent DA7
4PQ



PROPERTY DESCRIPTION

RE/MAX SELECT are delighted to offer for sale this stunning first floor maisonette close to amenities and transportation links, including Bexleyheath station. This spacious property comprises 2 double bedrooms, open-plan living room/kitchen, fitted bathroom, driveway, and 40ft (approx) rear garden. Further benefits include garage, gas central heating, and double glazing.

Total Internal Area approx: 816.65 sq ft (75.87sq m).





ROOM DESCRIPTIONS

Ground Floor

Entrance Hall

Carpeted, storage cupboard; carpeted stairs leading to first floor.

First Floor

Landing

Carpeted, radiator; access to loft.

Living Room

22' 5" x 10' 11" (6.82m x 3.32m) Wood flooring, radiator, double glazed windows.

Kitchen

Wood flooring; range of wall and base units with complimentary worktops, undermount sink with mixer tap; gas hob with stainless steel extractor hood over; oven, integrated fridge/freezer, integrated washing machine, radiator, double glazed windows; door leading to rear garden.

Bedroom

13' 9" x 11' 4" (4.18m x 3.46m) Carpeted, radiator, double glazed windows.

Bedroom

13' 1" x 10' 10" (3.98m x 3.29m) Carpeted, radiator, double glazed windows.

Bathroom

2.40m x 1.78m (7' 10" x 5' 10") Tiled flooring, tiled walls; panelled bath with shower-mixer; wash-hand basin, w/c, storage cupboard, double glazed frosted windows.

External

Driveway

Off street parking for multiple cars.

Rear Garden

Approximately 40ft; patio, lawn; access to garage.

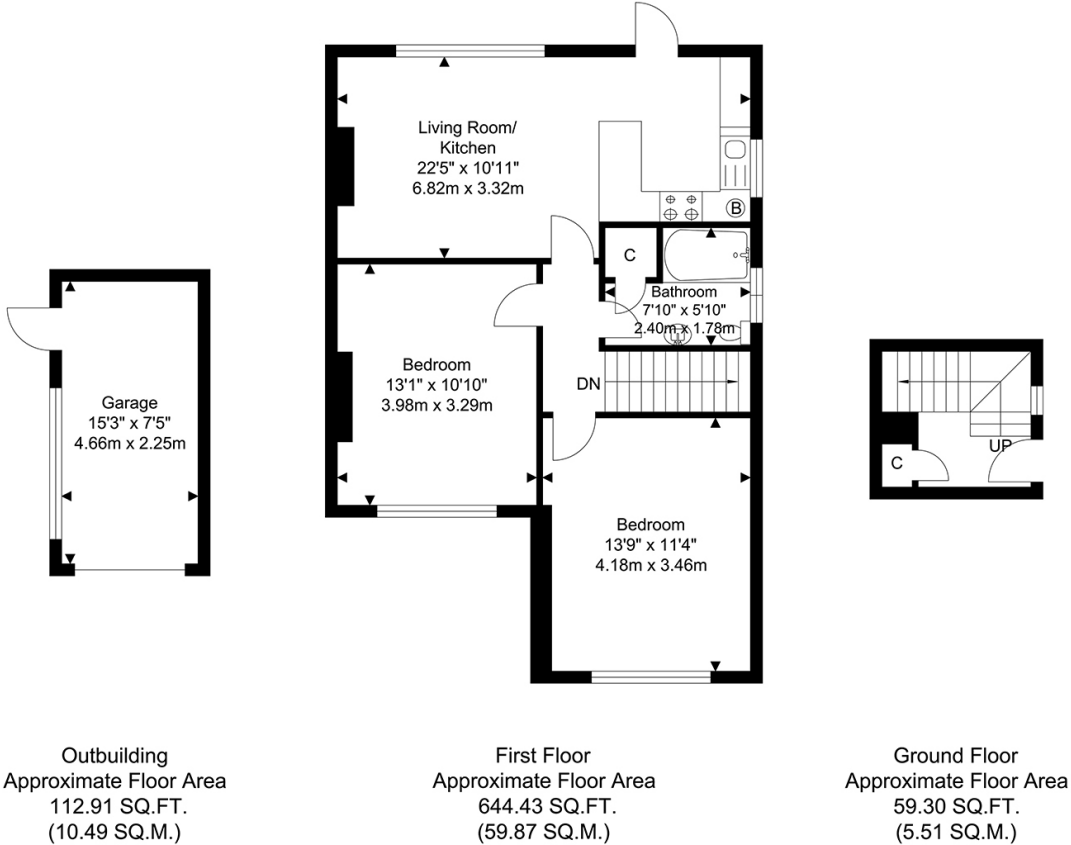
Garage

16' 11" x 8' 2" (5.15m x 2.50m) Electrical power; up-and-over door.

Information

- Lease: 926 years remaining
- Ground Rent: £7.00 per annum
- 0.3 miles (approx) to Bexleyheath Station
- 1.8 miles (approx) to Abbey Wood Station with Crossrail / Elizabeth Line & Thameslink (easy access via SuperLoop express bus service)
- Close to A2 / M25
- Close to sought-after schools incl 4 grammar schools
- 0.6 miles (approx) to Crook Log Leisure Centre & Swimming Pool
- 0.8 miles (approx) to Danson Park & Lake
- 0.7miles (approx) to Broadway Shopping Centre
- Council Tax: Band C

FLOORPLAN



TOTAL APPROX FLOOR AREA 816.65 SQ. FT / 75.87 SQ. M
For Identification Purposes Only.

