



BESSEMER PLACE, NORTH GREENWICH, LONDON SE10 0FN

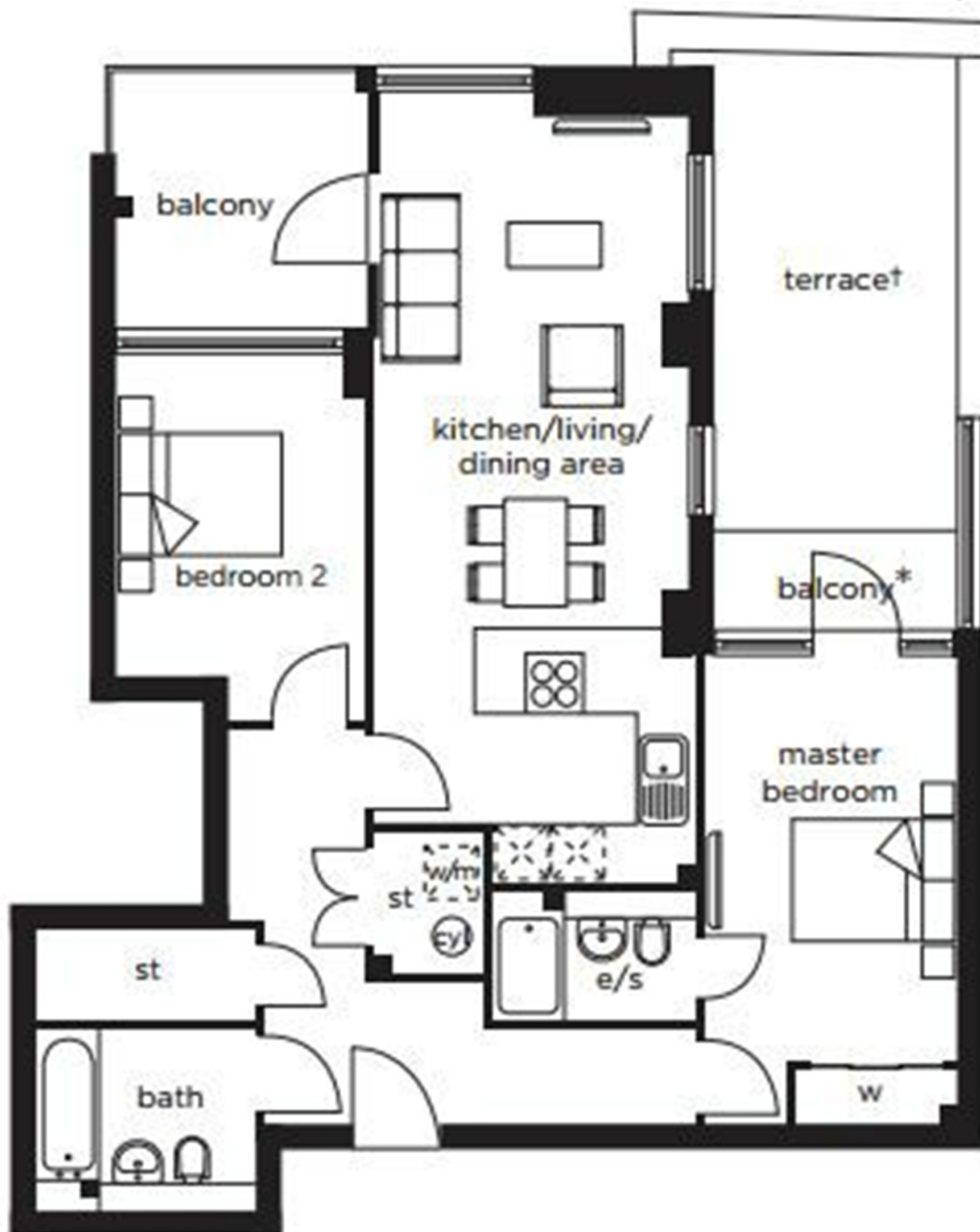
Situated in the heart of the Greenwich Peninsula a superb two bedroom apartment. Two double bedrooms with master boasting en-suite shower room and access to private balcony and further bathroom. The apartment boasts a perfect specification, stylish kitchen with fully integrated appliances open plan to reception/dining room providing access to balcony. Located moments from the O2 Arena, North Greenwich tube station and features concierge service and on-site residents gym.

**£2,600
PCM**

VIEWING BY APPOINTMENT WITH 1ST AVENUE. CALL: 020 8293 8600

**47 BESSEMER PLACE,
NORTH GREENWICH,
LONDON SE10 0FN**

£2,600 PCM



**VIEWING BY APPOINTMENT
WITH 1ST AVENUE.**

CALL: 020 8293 8600

1stavenue
Real Estate Services