



Hampton Court

£600,000

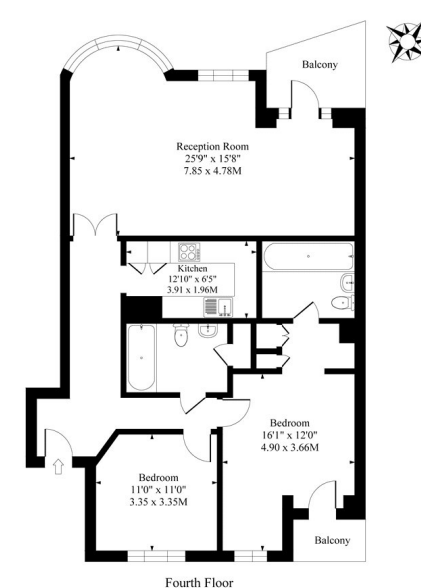
Hampton Court, London, King & Queen Wharf SE16 5SU

A superior 1,066 sq ft, river facing, dual aspect, two bedroom, two bathroom apartment with two balconies, stunning river views and secure allocated parking. Located within King and Queen Wharf, a gated development with 24hr concierge, swimming pool, sauna and jacuzzi. Hampton Court is conveniently located on Rotherhithe Street, moments from the Thames Path, Stave Hill Ecological Park and Surrey Quays Shopping Centre. Equidistant between Rotherhithe and Canada Water stations [Jubilee and Overground] with regular riverboat services to Canary Wharf via nearby Doubletree Docklands Nelson Dock Pier.

Occupying part of the fourth floor this exceptional dual aspect, river facing apartment comprises entrance hall, impressive reception room with door leading to private balcony providing stunning water views, dining area with feature bay window, separate fitted kitchen with work tops and integrated appliances, master bedroom with dressing area, fitted wardrobes, en-suite bathroom and door to second balcony, bedroom two and family bathroom. Residents of Hampton Court have the benefit of 24hr concierge facilities, secure allocated parking and access to excellent communal facilities including swimming pool, sauna and jacuzzi.

- Hampton Court SE16
- Dual Aspect River Facing Apartment
- Two Double Bedrooms
- 24Hr Concierge And Secure Allocated Parking
- Stunning River Views
- 1,066 Sq Ft
- Two Balconies
- Two Bathrooms
- Swimming Pool, Sauna And Jacuzzi
- Excellent Location

Hampton Court, King & Queen Wharf, London, SE16



Approximate Gross Internal Area 1066 Sq Ft - 99.03 Sq M
Measured in accordance with RICS guidelines. Every attempt is made to ensure accuracy.
However all measurements are approximate.
The floor plan is illustrative purposes only and is not to scale



