



Stevenage Road

Morello Gardens | Stevenage Road | Hitchin | Herts | SG4 9DW

www.stonegate-estates.co.uk



STEVENAGE ROAD

Property Description

A well presented purpose built flat in a popular location. The flat offers spacious accommodation with a good size lounge, Kitchen/breakfast room, two double bedrooms, with an en-suite shower room to the master bedroom, new carpets have been fitted throughout. Allocated parking is directly outside the flat within the private parking area for residents of the flats. This is a wonderful flat and is available as a chain free purchase.

Hitchin town provides a broad range of shops and a regular traditional market, together with a good selection of restaurants, bars and pubs within its historic centre. The town also provides a swimming centre, theatres and a library, whilst the commuter is served by the main line railway station (Kings Cross - 30 minutes) and direct links to the A1(M).

A superb flat, which is ready to move in to and is available without an upward chain.

102 Years remaining on the Lease

Service Charge £2766/annum

Ground rent TBC

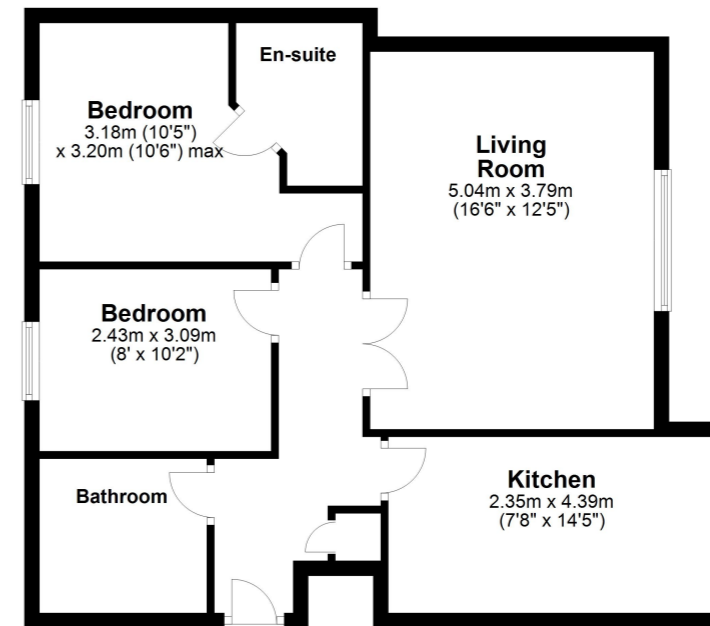
£265,000 Leasehold





Floor Plan

Approx. 64.1 sq. metres (690.3 sq. feet)



Total area: approx. 64.1 sq. metres (690.3 sq. feet)

All measurements shown are approximate and for guidance only. Garages and workshops are not included in any gross floor areas unless integral to the main building where they will be included.
Plan produced using PlanUp.



- Ground Floor Apartment
- Spacious Accommodation
- Kitchen/Breakfast Room
- Two Double bedrooms
- En-suite to Master Bedroom
- Well Presented With new Carpets
- Allocated Parking Space
- Chain Free

EPC Rating:

Stonegate Estate Agents

01462 438979

sales@stonegate-estates.co.uk | www.stonegate-estates.co.uk

