



21 Barnhorn Road, Bexhill-on-Sea, East
Sussex, TN39 4QB

£599,950

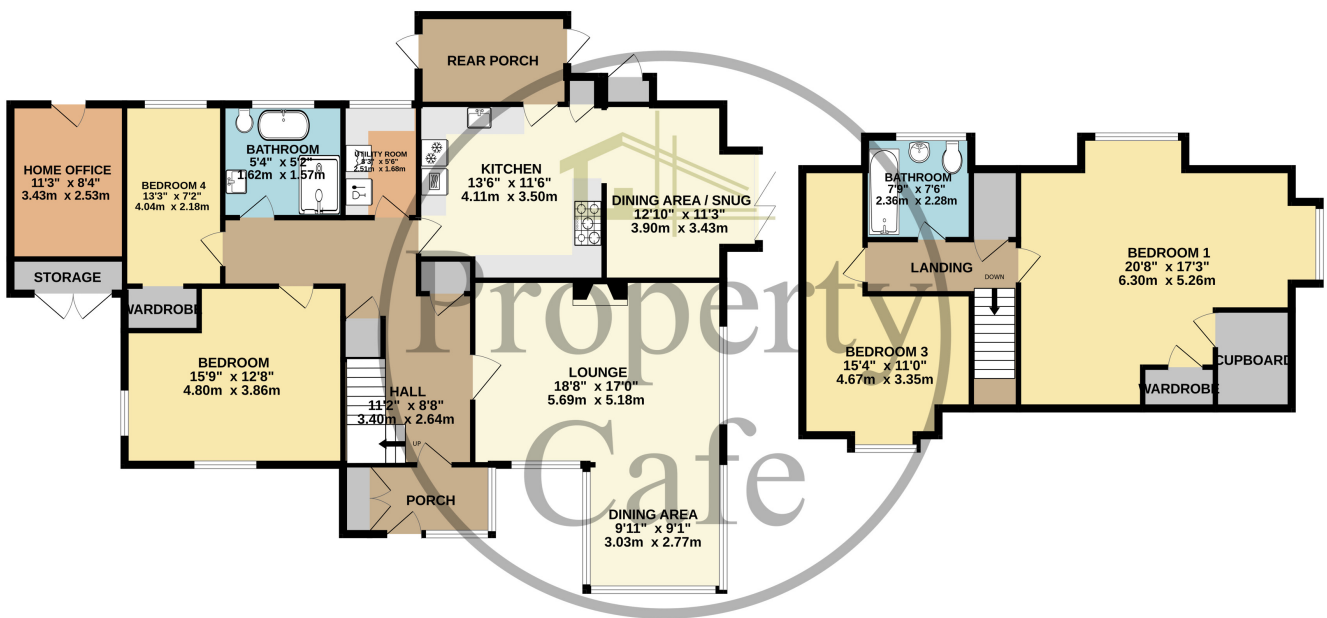


- Well Presented Four Bedroom Family Home
- Four Good Size Family Bedrooms
- South Facing Lounge With Fireplace
- Dining Area Over Looking The Garden
- Separate Utility/Laundry Room
- Spacious Modern Fitted Kitchen
- Enclosed Entrance Lobby-Porch
- Separate Dining Area / Snug
- Raised Decked Patio Area
- Large South Facing Rear Garden
- Enclosed Front Driveway & Parking
- Immaculate Inner Hall & Landing Areas
- Two Modern Bathrooms (Ground & First Floor)
- Home Office With Superfast Broadband
- Close To Little Common Village Shops
- Charming Character Features



GROUND FLOOR
1496 sq.ft. (139.0 sq.m.) approx.

1ST FLOOR
692 sq.ft. (64.3 sq.m.) approx.



TOTAL FLOOR AREA : 2189 sq.ft. (203.3 sq.m.) approx.

Whilst every attempt has been made to ensure the accuracy of the floorplan contained here, measurements of doors, windows, rooms and any other items are approximate and no responsibility is taken for any error, omission or mis-statement. This plan is for illustrative purposes only and should be used as such by any prospective purchaser. The services, systems and appliances shown have not been tested and no guarantee as to their operability or efficiency can be given.
Made with Metropix ©2024

