



NEWSON & BUCK  
ESTATE AGENTS



29 Hayfield Road, North Wootton, King's Lynn, Norfolk PE30 3RR

£199,995

A very well located two bedroom semi-detached home situated in the popular Village of North Wootton. The accommodation comprises entrance lobby, lounge diner, kitchen, bathroom and two bedrooms. The property benefits from gas central heating, double glazing, garage and off road parking. A range of amenities can be found within walking distance including North Wootton Primary School.



#### Entrance Hall

Double glazed window to front, radiator and laminate flooring.

#### Lounge Diner

14' 1" x 12' 1" (4.29m x 3.68m) Double glazed window to front, radiator, under stairs cupboard and fitted carpet.

#### Kitchen

6' 9" x 12' 0" (2.06m x 3.66m) Double glazed door and window to front, double glazed window to side, fitted kitchen with space for fridge freezer and washing machine, gas central heating, radiator and tiled flooring.

#### Landing

Access to loft and fitted carpet.

#### Bedroom One

8' 6" x 12' 0" (2.59m x 3.66m) Double glazed window to front, radiator and fitted carpet.

#### Bedroom Two

6' 11" x 12' 0" (2.11m x 3.66m) Double glazed window to rear, cupboard with hot water tank, radiator and fitted carpet.

#### Bathroom

4' 11" x 8' 0" (1.50m x 2.44m) Double glazed window to side, panel bath, low flush w/c, wash hand basin, radiator and fitted carpet.

#### Garage

Double doors to front.

#### Garden

To the front of the property is a gravel driveway creating parking for numerous vehicles. To the rear of the property is a garden mainly laid to lawn with mature shrubs and hedging.

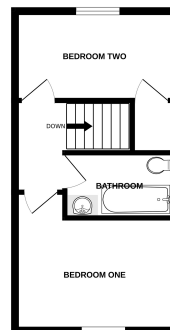
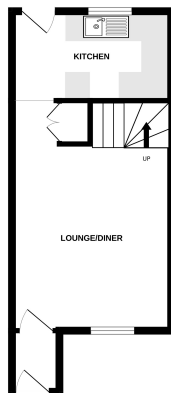
EPC Rating: Awaiting

Council Tax Band: B



GROUND FLOOR

1ST FLOOR



While every effort has been made to ensure the accuracy of the data contained herein, the information is provided as a guide only and should not be relied upon for any specific purpose. The user should verify the information with the relevant authorities. The user should also be aware that the information is subject to change without notice. Mills and Sons Ltd 2023