

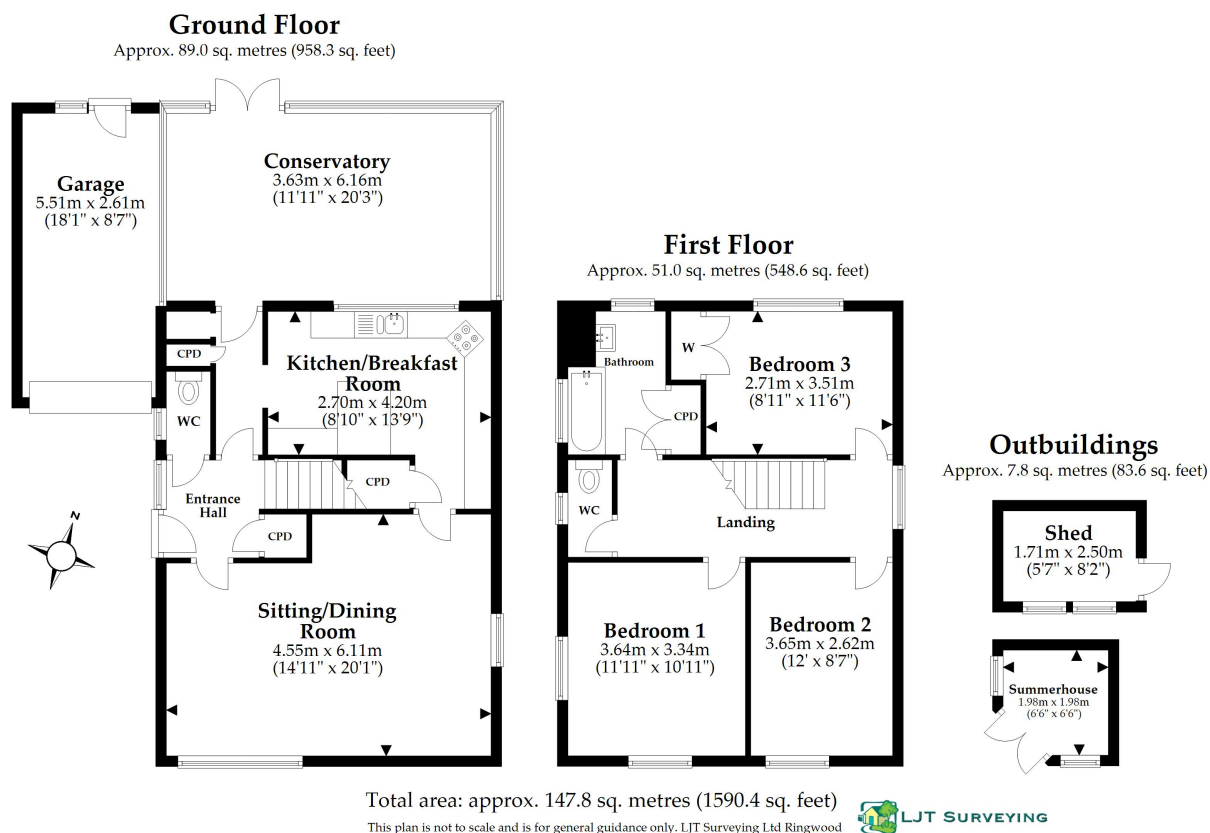


# 109 Southampton Road

Ringwood, Hampshire BH24 1HS

£485,000





# 109 Southampton Road

## Ringwood, Hampshire BH24 1HS

A modern 3 bedroom detached house located within walking distance of local shops, schools and the popular Ringwood Town centre which has much to offer in the way of amenities, including numerous country pubs & restaurants, boutique shops, a David Lloyd Health & Leisure Club & a local Post office. The A31 & A338 dual carriageways provide links to the sandy coastline of Bournemouth (8 miles south), Salisbury (18 miles north) & the M27 for Southampton (18 miles east). National Express coaches make regular trips to London and all its airports. OWNERS SUITED \*NO FORWARD CHAIN\*SOLE AGENTS

### KEY FEATURES

- LOUNGE / DINING AREA
- KITCHEN/BREAKFAST ROOM
- LARGE CONSERVATORY
- FAMILY BATHROOM
- PRIVATE REAR GARDENS
- SINGLE GARAGE AND PARKING



**N.B. NONE OF THE APPLIANCES/SERVICES MENTIONED IN THESE DETAILS HAVE BEEN TESTED FOR WORKING CONDITION BY ANTHONYS OF RINGWOOD**

**Property Ref: 28496025**

These particulars are believed to be correct, but their accuracy is not guaranteed and they do not constitute an offer or contract