



West Hill Hitchin SG5 2HZ

£1,150,000 Freehold

Introducing your dream family home in the sought after West side location. Nestled within the vibrant town of Hitchin, this impeccable, detached house is simply a family delight. Combining contemporary elegance with practicality, this property showcases an exceptional lifestyle that your family deserves.

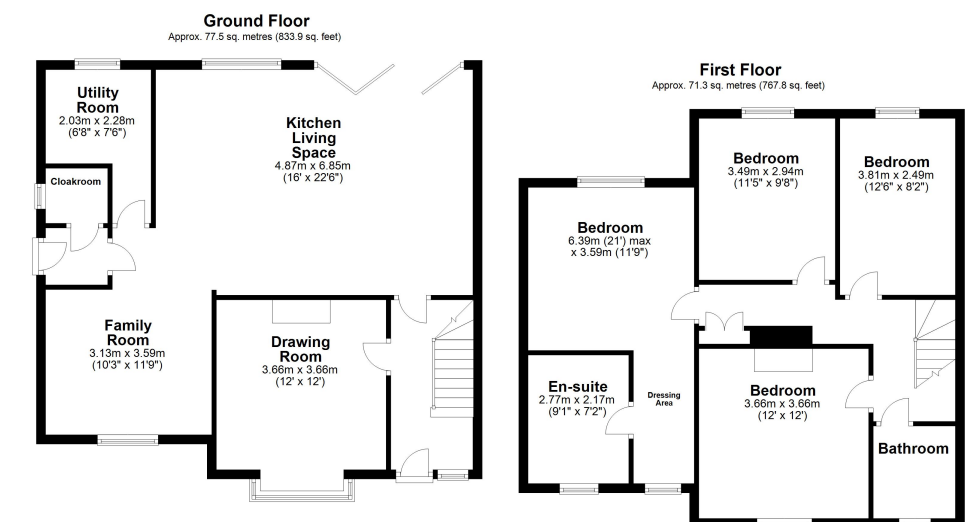
The moment you step inside, you'll be captivated by the bright and breezy ambience, owing to the bifold doors that seamlessly connect the indoor and outdoor living spaces. Enjoy the blissful convenience of an open plan layout, perfect for quality moments and making lasting memories with your loved ones.

Unleash your inner chef in the sleek, modern kitchen offering a range of integrated appliances and with a large central island, making meal preparation a pleasure. Weave your way through this astonishing property and discover a lavish master bedroom, complete with a charming dressing area and a luxuriously appointed ensuite bathroom. Each of the additional three bedrooms are thoughtfully designed, with comfort and relaxation in mind.

For the growing family's storage needs, revel in the convenience of a dedicated utility room, whilst ample room is provided by the cloakroom. Appreciate the ease of a pristine family bathroom, perfectly suiting the demands of busy family weekday mornings.

Parking worries have been catered for thanks to the generously sized driveway capable of accommodating two to three cars. Furthermore, there are landscaped gardens to the rear of the property, inviting as your private oasis of tranquillity, while offering a safe haven for the little ones to frolic around freely.

EPC Rating: C Council Tax: Band E



Total area: approx. 148.8 sq. metres (1601.7 sq. feet)
All measurements shown are approximate and for guidance only. Garages and workshops are not included in any gross floor areas unless integral to the main building where they will be included.
Plan produced using PlanUp.

