



## Lavender Way

HITCHIN | Hertfordshire | SG5 2LU

[www.stonegate-estates.co.uk](http://www.stonegate-estates.co.uk)



# LAVENDER WAY

---

## Property Description

Introducing this stunning detached bungalow in the excellent location of Hitchin, a picturesque market town in North Hertfordshire.

The property boasts two spacious double bedrooms, two modern bathrooms, a well-appointed kitchen, a convenient garage, off-road parking for two cars, and beautifully manicured enclosed gardens. Being presented in excellent order throughout, this home is certainly ready to move into with ease.

Located in Hitchin, known for its historic narrow winding streets, gorgeous architecture, and traditional market square, this property offers easy commutes to London and Cambridge, with Kings Cross being just 30 minutes away.

Surrounded by top-rated schools such as Kingshott School, St Christopher School, and multiple outstanding and good primary schools, as well as Ofsted outstanding comprehensives, Hitchin provides an excellent education for any child.

With a plethora of local shops, restaurants, and coffee shops, Hitchin offers a vibrant and lively community for anyone looking for a peaceful yet engaging lifestyle.

Don't miss the opportunity to view this exceptional property and contact us today to arrange a viewing.

**£699,995 Freehold**



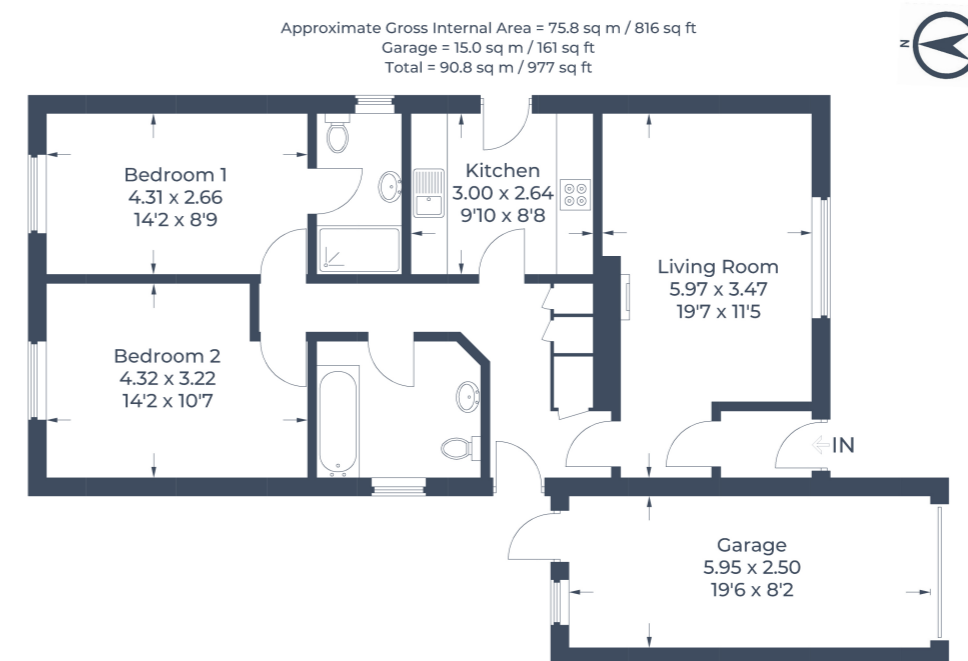


Illustration for identification purposes only, measurements are approximate, not to scale.  
 © CJ Property Marketing Produced for Stonegate Estates



- Detached Bungalow
- Excellent Condition
- Two Double Bedrooms
- No Chain
- Popular Location
- Off Road Parking
- Two Bathrooms
- Walking distance to Town Centre

EPC Rating: D

---

Stonegate Estate Agents

01462 438979

[sales@stonegate-estates.co.uk](mailto:sales@stonegate-estates.co.uk) | [www.stonegate-estates.co.uk](http://www.stonegate-estates.co.uk)

