



**11 Victory Apartments, Phoebe Road,
Pentrechwyth, Swansea, SA1 7FD**
Asking Price: £94,950

- A Second Floor One Bedroom Apartment
- Popular And Sought After Residential Area
- Immaculately Presented Throughout
- Ideal Investment Opportunity
- Allocated Parking
- Open Plan Lounge/Kitchen/Diner



Entrance Communal Hallway

With staircase and lifts to all floors.

Entrance Hallway

Entered via front door giving access to hallway with built in cupboard space and doors to:-

Lounge/Kitchen

5.740m x 3.304m (18' 10" x 10' 10")

A good size light and airy room, laminate flooring and double glazed patio doors opening onto a sit out balcony. The lounge is open plan effect to a well present and modern fitted kitchen with a good selection of matching base and wall units in grey with stainless steel handles, colour coordinated roll top work surface space and preparation area incorporating sink unit with hot and cold mixer taps over, built in fan assisted electric oven, 4 ring hob and stainless steel extractor canopy over, integral dish washer, plumbing for automatic washing machine, space for fridge freezer, extractor fan and double glazed window to side aspect.

Bedroom One

3.983m x 2.831m (13' 1" x 9' 3")

With double glazed window to front aspect.

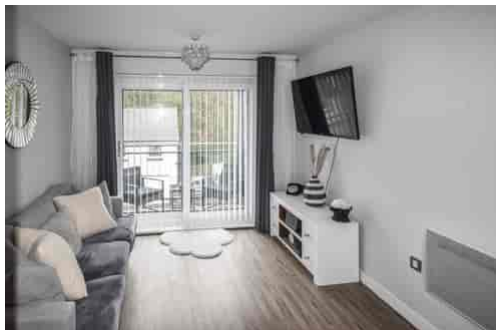
Bathroom

2.749m x 1.762m (9' 0" x 5' 9")

A modern 3 piece suite in white comprising panel bath with mains shower over and glazed side screen, vanity wash hand basin, low level W.C, tiled walls, shaver point, heated chrome towel rail and extractor fan.

External

To the front of the apartment block is an entrance communal reception hallway with staircase and lifts to all floors. The apartment also has the benefit of allocated parking accessed from the car park that is situated beneath the aptment block.



FRESH

We deliver on Service ...

