



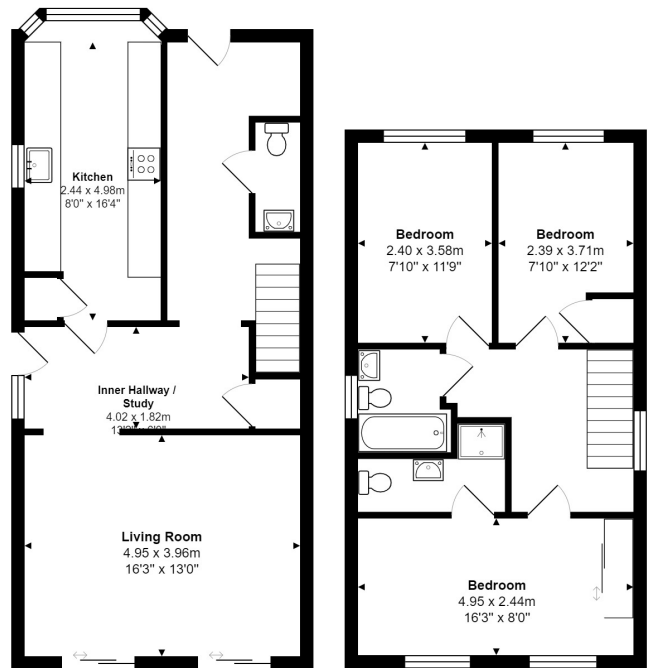
## Mildmay Road, Chelmsford

£575,000

- Individually built detached house
- Off street parking for 2 cars
- Three good size bedrooms
- Newly fitted kitchen
- En-suite shower room
- Easy access to City Centre and Railway Station
- Popular location of Old Moulsham
- Council tax D

An individually built 1970's detached property superbly presented and situated in the heart of the extremely popular location of Old Moulsham. The property has a ground floor cloakroom, fitted kitchen, spacious inner hallway, good size lounge, on the first floor there are three good size bedrooms with en-suite shower room to master bedroom and a family bathroom, there is also gas central heating and double glazing.

The property benefits from off road parking and is within walking distance of Moulsham Street shopping facilities and amenities including Tesco Express, a short distance to Chelmsford City Centre with the fashionable Bond Street shopping experience and Chelmsford railway station with frequent trains running through to London Liverpool Street.



Measurements are approximate for illustrative purposes only and may have been taken from the widest area  
Floorplan Copyright Equinox Energy Performance Certificates  
[www.energyperformancecertificates.biz](http://www.energyperformancecertificates.biz)