



Honywood Gardens, Old Moulsham, Chelmsford, Essex, CM2 0GB

Council Tax Band D (Chelmsford City Council)

 1  2  1

£500,000 Freehold

Bond Residential are delighted to offer for sale this link detached bungalow located on a over 55's development being sold with no onward chain.

The property offers an entrance hall, living room, conservatory, fitted kitchen/breakfast room with built in oven & hob. There are two double bedrooms, main bedroom with fitted wardrobes, the shower room with modern white suite completes the internal accommodation. Outside the property benefits from a carport parking space to the side on the property with gates giving access to the rear garden.

LOCATION

Old Moulsham, a historic and picturesque area located in the heart of Chelmsford. This charming neighbourhood is known for its stunning period homes, tree-lined streets, and friendly community atmosphere. The area is home to a mix of families, professionals and retirees, and offers a fantastic quality of life.

The village-like feel of Old Moulsham is enhanced by a range of independent shops, cafes and restaurants. Old Moulsham boasts a range of architectural styles, from quaint Tudor cottages to grand Georgian townhouses, all steeped in history and character.

The local church, St John the Evangelist, is a stunning example of Victorian architecture and a focal point of the community.

For those who enjoy the outdoors, Old Moulsham has plenty to offer. The area is surrounded by beautiful parks and green spaces, including Oaklands Park, which boasts tennis courts, a children's playground, and a small cafe within Chelmsford Museum which also within the grounds.

Old Moulsham is also conveniently located for commuters, with Chelmsford train station just a short walk away, providing fast and frequent services to London Liverpool Street, making it an ideal location for those looking for easy access to the capital.

Chelmsford city centre offers a thriving nightlife with a selection of bars and a wide selection of places to eat from independent family restaurants to well known chain restaurants serving cuisines from around the world, Chelmsford features a comprehensive range of shopping facilities with its pedestrianised High Street, two shopping precincts and hugely popular Bond Street with John Lewis store.

Overall, Old Moulsham is a delightful and highly sought-after area, offering the perfect blend of history, community, and convenience.

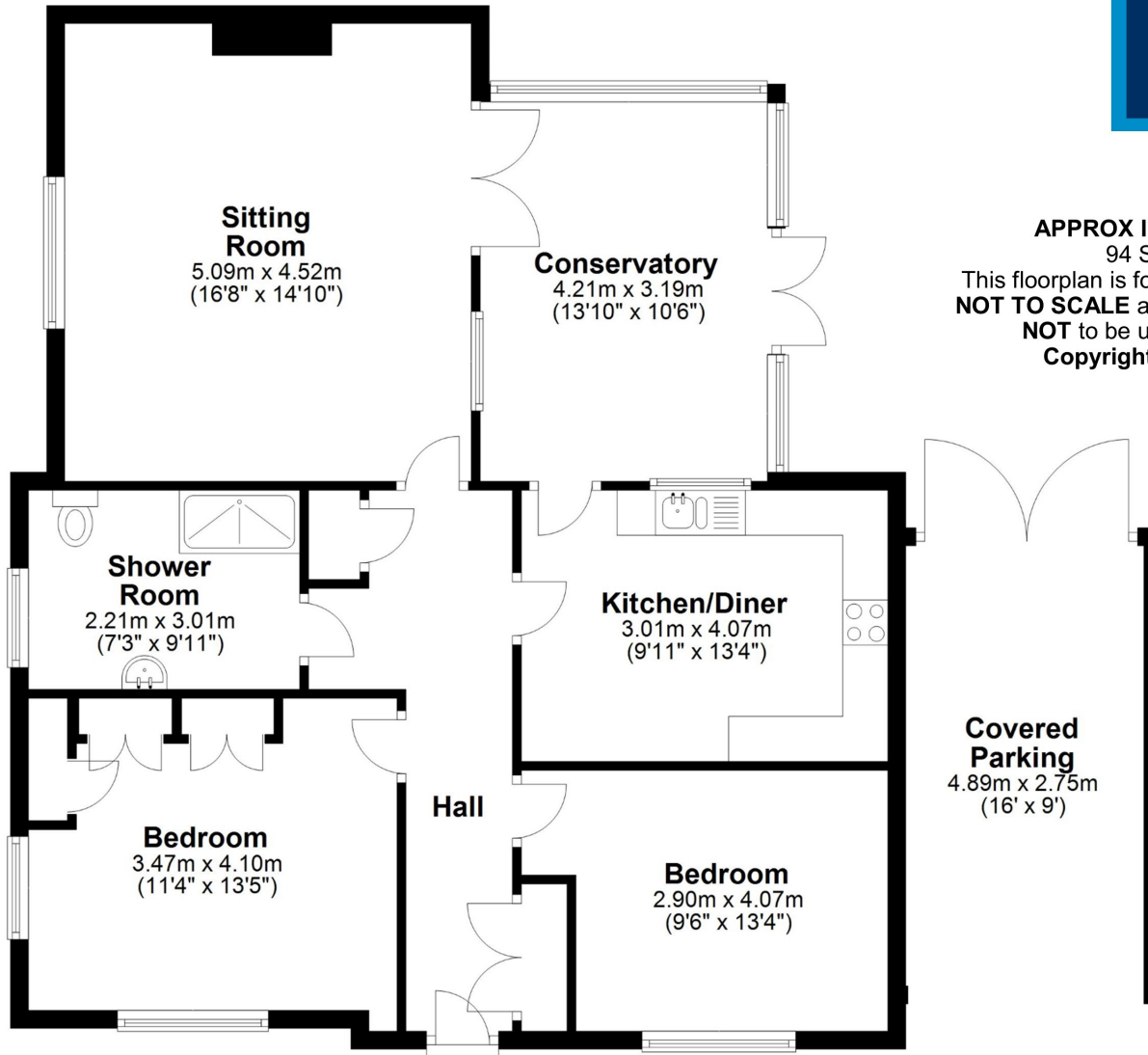
- Link Detached Bungalow
- £150 PA Residents Management Charge
- Gas Central Heating
- Two Double Bedrooms
- Rear Garden
- Over 55's Development
- No Onward Chain
- Conservatory
- Carport Parking Space
- Popular Old Moulsham Area







Ground Floor



APPROX INTERNAL FLOOR AREA
 94 SQ M (1010 SQ FT)
 This floorplan is for illustrative purposes only and is **NOT TO SCALE** all measurements are approximate **NOT** to be used for valuation purposes.
Copyright Bond Residential 2024



Covered Parking
 4.89m x 2.75m
 (16' x 9')

78, New London Road,
 Chelmsford, Essex, CM2 0PD
Telephone: 01245 500599
Website: www.bondresidential.co.uk

Consumer Protection from Unfair Trading Regulations 2008 and the Business Protection from Misleading Marketing Regulations 2008. Bond Residential have made every effort to ensure that consumers and/or businesses are treated fairly and provided with accurate material information as required by law. We have not tested any apparatus, equipment, fixture, fitting or any services and as such are unable to verify they are in working order, fit for their purpose, or within the ownership of the seller or landlord. Neither have we been able to check the legal documentation to verify the legal status of the property. We therefore advise potential buyers or tenants to verify these matters with their own solicitors or other advisers.

Energy Efficiency Rating		Current	Potential
Very energy efficient - lower running costs			88
A	(91-100)		
B	(81-90)		
C	(71-80)		
D	(61-70)		
E	(51-60)		
F	(41-50)		
G	(31-40)		
Not energy efficient - higher running costs			
England, Scotland & Wales			By Design 2008/12

