



17 Wilson Street, Cowdenbeath, Fife, KY4 9DQ

Tastefully-Presented, Two-Bedroom, Semi-Detached Bungalow with Gardens

Up to date price and viewing info at mov8realestate.com/property

espc rightmove  Zoopla
find your happy

Property Description

Tastefully presented, two-bedroom, semi-detached stone-built bungalow, with gardens. Located on a quiet side street near the centre of Cowdenbeath, Fife.

Comprises an entrance hallway, living room, dining room, kitchen, two double bedrooms, and a shower room.

Finished in contemporary decor throughout, highlights include an integrated kitchen, a Genero bathroom, with modern flooring and lighting.

There are impressive public rooms with tall ceilings, gas central heating, double glazing, and good storage including a walk-in dresser/store.

Externally, the property benefits from a lawn to the front; whilst an enclosed terraced rear garden features a lawn, patio, and a store shed.

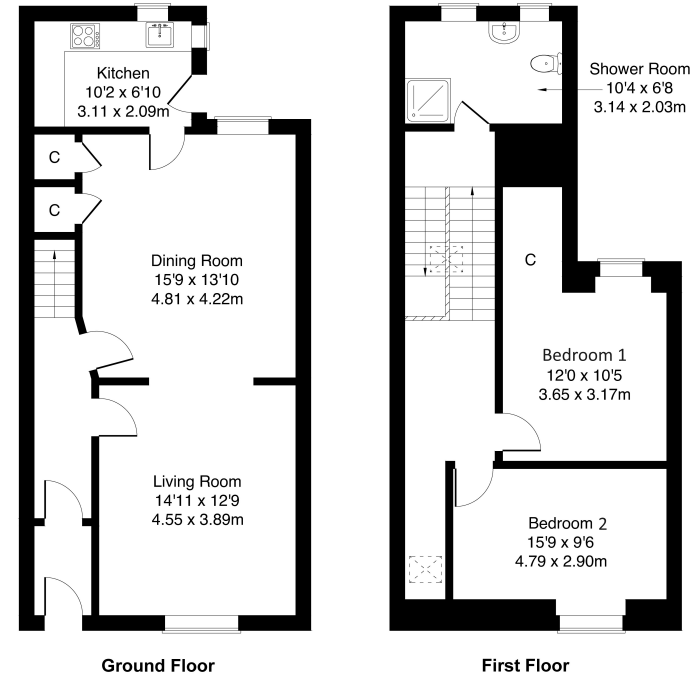
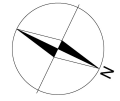
A welcoming entrance vestibule opens into the ground floor hall, with a spacious living room set to the front, tastefully finished, including a wall-mount TV point and an open-press with shelves. Herringbone-style flooring continues into a generously sized dining room, which can be accessed from both the hall and lounge, featuring convenient understair built-in storage. Set off the dining room, a stylish kitchen is fitted with modern units, wood effect worktops, a tiled surround and a sink with a drainer and a pull-out spray tap; whilst also affording access to the rear garden. Integrated appliances include an oven, gas hob, fridge/freezer, wine fridge, and washing machine.

On the upper floor, two well-presented carpeted double bedrooms are set to opposite aspects, offering ample space for furnishings, with bedroom one also featuring deep built-in storage space. Completing the accommodation, with two windows facing the rear, a large bathroom is set on the mid-landing, with a modern suite including tiled splash walls for the shower, wood effect flooring and spotlighting.



17 Wilson Street, Cowdenbeath, KY4 9DQ

Approximate Gross Internal Area: (1141 sq ft - 106 sq m.)



Legal Disclaimer : Floor-plan and measurements are for illustrative guidance only, and not intended to form part of any contract.

Area Description

Cowdenbeath is a long-established township in south-west Fife, offering a short commute to and from Edinburgh via the nearby A92, which connects to the M90. The bustling High Street provides a good selection of local shops, with a Morrisons supermarket, a library, banks, and post office facilities. Other amenities include a leisure centre with a swimming pool and gym, public

parklands, a football stadium, and a golf course. There are several primary schools, and a modern high school built in 2003. Dunfermline is the closest large town, some 6 miles eastwards, with Kirkcaldy 9 miles to the west. Cowdenbeath has its own railway station, with both trains and buses offering frequent connections to Edinburgh and other local and long-distance destinations.





Our Services

- Free pre-sale property valuations
- Great value fixed estate agency fees
- Extensive buyer matching database
- Purchase and sale conveyancing

Contact Us

0345 646 0208

sales@mov8realestate.com

www.mov8.com

Head Office

6 Redheughs Rigg, Edinburgh, EH12 9DQ

Glasgow Office

77 Renfrew Street, Glasgow, G2 3BZ



Estate Agents and Solicitors

