



23 Holmesdale Road, Bexhill-on-Sea, East
Sussex, TN39 3QE

£665,000

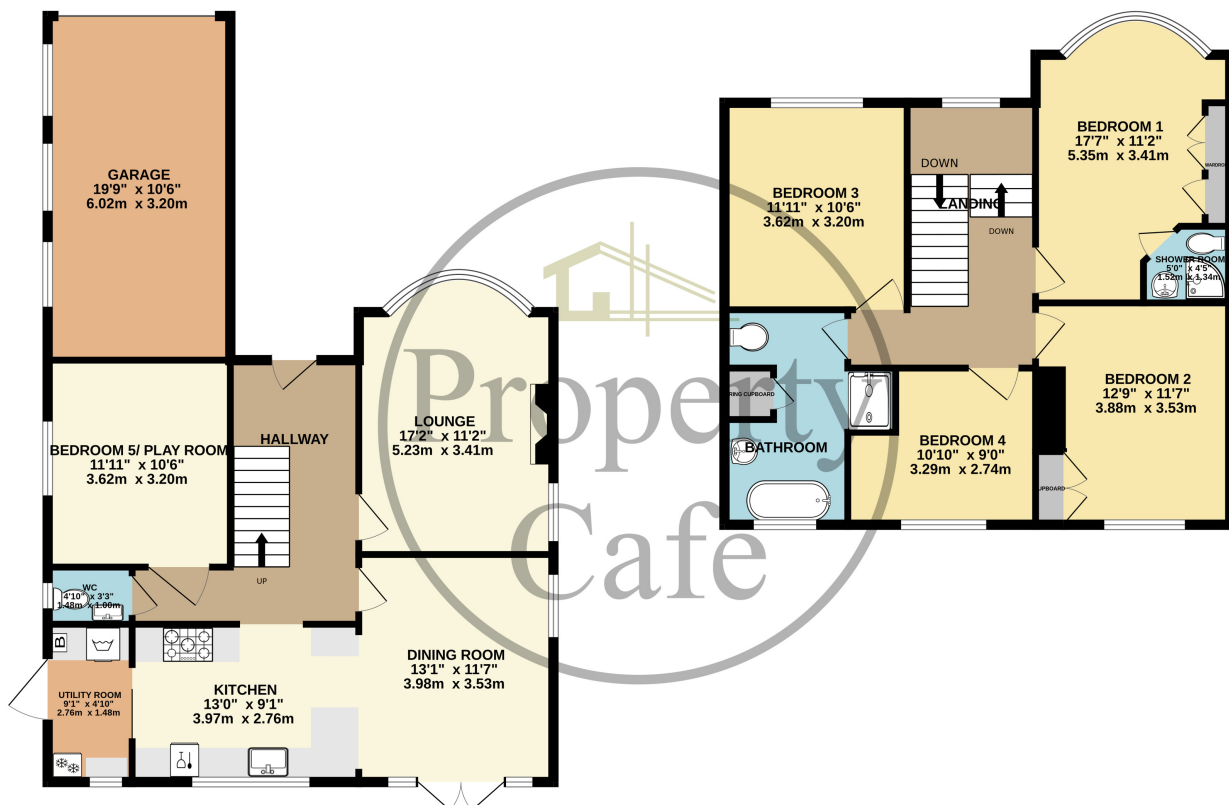


- Detached Family Home For Sale
- Separate Lounge With Bay Window
- Modern Fitted Kitchen/Diner
- Separate Utility Room
- Master Bedroom & En-suite
- Four/Five Bedrooms.
- Modern Bathroom Suite With Roll Top Bath
- Ground Floor W/C
- West Facing Sunny Rear Garden
- Immaculately Presented Throughout
- Sought After Location
- Viewing Highly Recommended



GROUND FLOOR
949 sq.ft. (88.2 sq.m.) approx.

1ST FLOOR
740 sq.ft. (68.7 sq.m.) approx.



TOTAL FLOOR AREA : 1689 sq.ft. (156.9 sq.m.) approx.

Whilst every attempt has been made to ensure the accuracy of the floorplan contained here, measurements of doors, windows, rooms and any other items are approximate and no responsibility is taken for any error, omission or mis-statement. This plan is for illustrative purposes only and should be used as such by any prospective purchaser. The services, systems and appliances shown have not been tested and no guarantee as to their operability or efficiency can be given.
Made with Metroplex 5/2024

