

YOUR LOCAL INDEPENDENT ESTATE AGENCY
ESTABLISHED SINCE 1938

MANNS
& MANNS
EST. 1938

VIEWINGS AVAILABLE 7 DAYS A WEEK
TEL: 02380 404055

MOUNTBATTEN DRIVE, SARISBURY GREEN, SOUTHAMPTON, SO31 7NF



STYLISH AND WELL PRESENTED THREE BEDROOM END OF TERRACE TOWNHOUSE WITH A GARAGE AND GARDEN, NESTLED IN A POPULAR RESIDENTIAL DEVELOPMENT. THE DWELLING IS IDEALLY SITUATED FOR LOCAL AMENITIES, TRANSPORT LINKS, SCHOOLS AND GREEN SPACES. VIEWING HIGHLY RECOMMENDED.

£420,000 Freehold

We are delighted to market this stylish three bedroom end of terraced townhouse situated in a popular residential development in Sarisbury Green. Built in approximately 2010 of brick elevations, with rendered features and hanging tiles to the front aspect, under a pitched tiled roof, the property benefits from gas fired heating and double glazing. Neutrally decorated throughout, this lovely house offers spaces to both relax and entertain, boasting accommodation that is ideal for those seeking a home designed to meet the demands of modern living. Arranged over three floors, the ground floor hosts a sizeable kitchen/diner. On the first floor is a living room and bedroom one, which boasts en-suite facilities. The second floor offers two further double bedrooms and a bathroom.

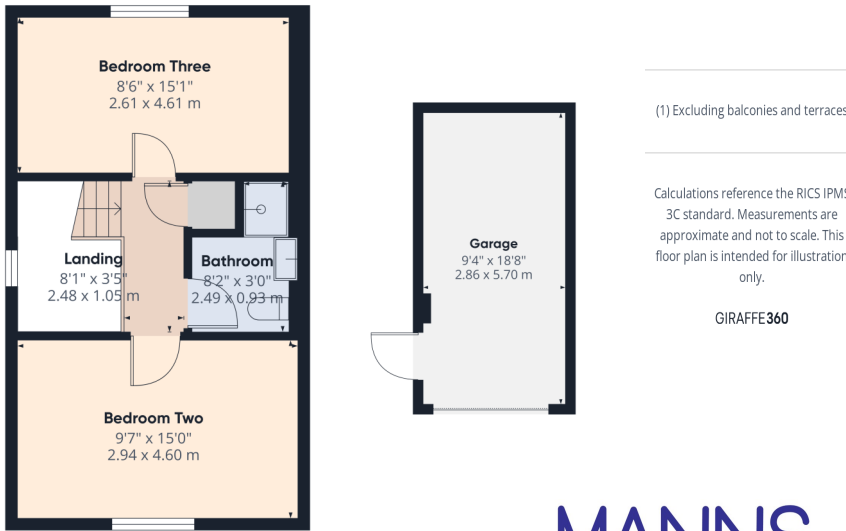
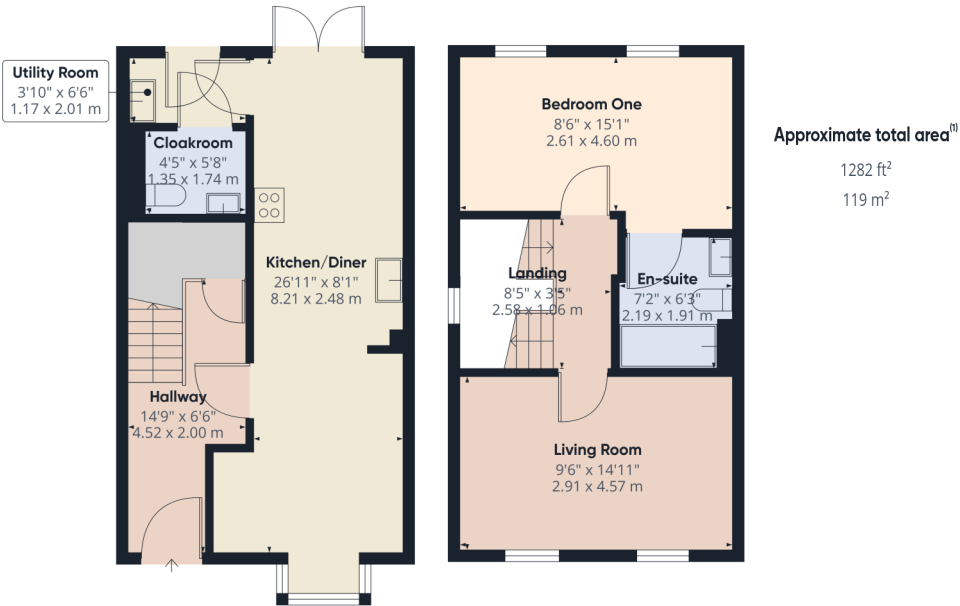
In our opinion, this property is ideally situated with access to transport links, local amenities, schools, and green spaces. Moreover, the proximity to the Holly Hill Woodland Park adds an additional layer of appeal, particularly for those with a love of nature and water-based activities. Don't miss out on the opportunity to make this your next home. Call us today to arrange a viewing .

The Local Area

Sarisbury Green is a village within the borough of Fareham, Hampshire. Surrounding villages include Swanwick, Park Gate, Locks Heath and Warsash. Historically, Sarisbury Green was a settlement along the ferry crossing of the River Hamble. In circa 1800 Bursledon Bridge was constructed, largely replacing the ferry crossing, and the road to Park Gate was built, resulting in Sarisbury being placed on the main route between the cities of Portsmouth and Southampton. Proximity to the A/M27 remains a major benefit of the location to this day.

The River Hamble is renowned for its natural beauty and sailing facilities with miles of scenic river and coastal walks. It is an internationally famed centre of yachting and motorboats and boasts several marinas that offer extensive facilities for both residential and visiting yachtsmen. The village offers two cricket greens, one alongside the A27 on Bridge Road and the other in nearby Allotment Road. Sarisbury Green is also the home of the highly popular Holly Hill Woodland Park, a historic parkland spanning approximately 30 hectares. Highlights include lakes, islands and waterfalls. Highly popular with families, ramblers and dog walkers alike, the area boasts beautiful woodland walks and designated picnic spots.

Schooling in the area is particularly attractive with the well regarded Sarisbury Infant School and Sarisbury Church of England Junior School in close proximity. The catchment school for 11-16 year olds is Brookfield Community School. Sarisbury Green boasts excellent transport links via a train station in Swanwick, and the M27 motorway that links the neighbouring cities of Southampton and Portsmouth. Nearby Southampton Airport Parkway train station is popular with commuters; the journey time to London Waterloo is approximately 1 hour and 20 minutes.



Ground Floor

Upon entering the property you are welcomed into the hallway, offering space to de boot. There are doors to principal rooms, stairs rising to the first floor and a handy under stairs cupboard providing useful storage.

The spacious open plan kitchen/diner is perfect for entertaining, spanning the depth of the property. There is a bay window to the front elevation and French doors to the rear, opening onto the patio. The modern fitted kitchen will prove popular with culinary enthusiasts and comprises a comprehensive range of wall and floor mounted units with a work surface over. There is an electric oven, four-ring gas hob with an extractor hood above, integrated dishwasher and appliance space for a fridge/freezer. A door opens into the utility room offering wall and base units, a sink and drainer, door to the rear garden and a door into the cloakroom. The modern cloakroom comprises wash hand basin and WC.

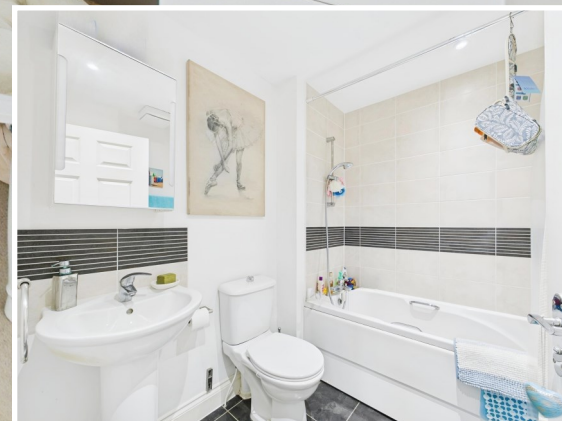


First Floor

Ascending to the first floor landing, you will find doors to all rooms and stairs to the second floor accommodation. The living room is perfect for relaxing and benefits from two front elevation windows allowing natural light to fill the space.



Bedroom one is a well-proportioned double room with two rear elevation windows offering views over the garden. Bedroom one also boasts the added convenience of a modern en-suite which is principally tiled and comprises a panel enclosed bath with a shower over, wash hand basin and a WC.



Second Floor

Rising to the second floor, the landing offers doors to all rooms and a linen cupboard providing useful storage. Bedroom two, another well-proportioned double room, presents a front elevation window. Bedroom three, another double, offers a window to the rear elevation with views over the garden. The bathroom is tiled to principal areas and comprises a shower cubicle, wash hand basin and a WC.

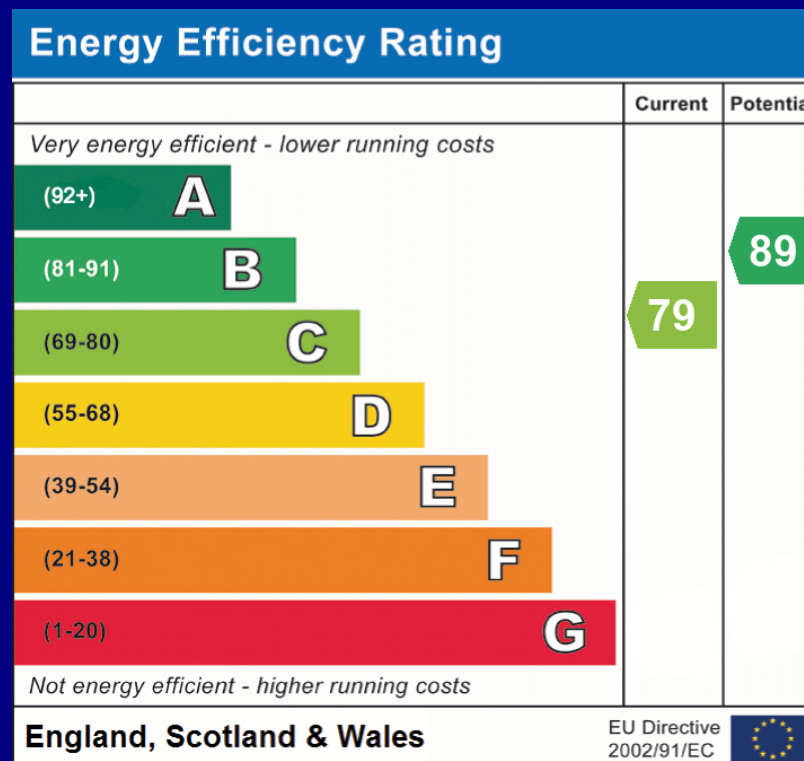


Outside

The front garden contains a number of shrubs and plants with a pathway leading to the entrance door under a canopied porch. The property benefits from a garage with additional parking to the side, which is located to the rear of the dwelling.

The rear garden is enclosed by timber fencing with a pedestrian gate. It is predominantly laid to artificial lawn with borders containing a mixture of trees and shrubs. A paved patio, adject to the property, offers a lovely spot for outdoor entertaining and al fresco dining.





COUNCIL TAX BAND: D - Fareham Borough Council. Charges for 2025/26 £2,164.55.

UTILITIES: Mains gas, electricity, water and drainage.

ESTATE CHARGE: £375 per annum.

Viewings strictly by appointment with Manns and Manns only. To arrange a viewing please contact us.

Tel: 02380 404055 Web: www.mannsandmanns.co.uk



**1 & 2 Brooklyn Cottages
Portsmouth Road
Southampton
SO31 8EP**



Disclaimer: Manns & Manns for themselves and together the vendors advise that these particulars do not constitute an offer or a contract and whilst these details are believed to be correct they are made without responsibility. All applicants must satisfy themselves by inspection as to the correctness of the statements made. The property is offered subject to formal contract and is being unsold AND ON THE DISTINCT UNDERSTANDING THAT ALL NEGOTIATIONS SHALL BE CONDUCTED THROUGH MANNS AND MANNS.

Nothing in these particulars shall be deemed to be a statement that the property is in good repair or condition or otherwise, nor that services or facilities are in good working order. All areas and measurements are approximate. Any reference to alterations or use is not intended to be a statement that any necessary planning, building regulation, listed building or any other consent has been obtained.

No fixtures and fittings are included in any sale of a property, unless explicitly agreed in writing with the agent once agreed with the seller (s).

Manns and Manns may use AI images to show empty properties with furniture, this is purely provided as a guide. Fixtures and fittings are not included, and purchasers must satisfy themselves with their own measurements to check furniture of their choosing fits the relevant spaces.