



Metcalfe Court, Greenwich, London, SE10 0BZ

£1,550 PCM

This superb two bedroom, two bathroom apartment is situated in the ever popular Greenwich Millennium Village. Finished to an excellent standard and benefits from a south facing balcony with views across Canary Wharf and the O2. Less than a 10 minute walk to North Greenwich tube station (Jubilee Line zone 2) offering quick access to central London and beyond. Offered furnished and has the additional benefit of secured parking and a 24 hour concierge. Available from the 7th February 2018.

Viewing by appointment with 1st avenue.

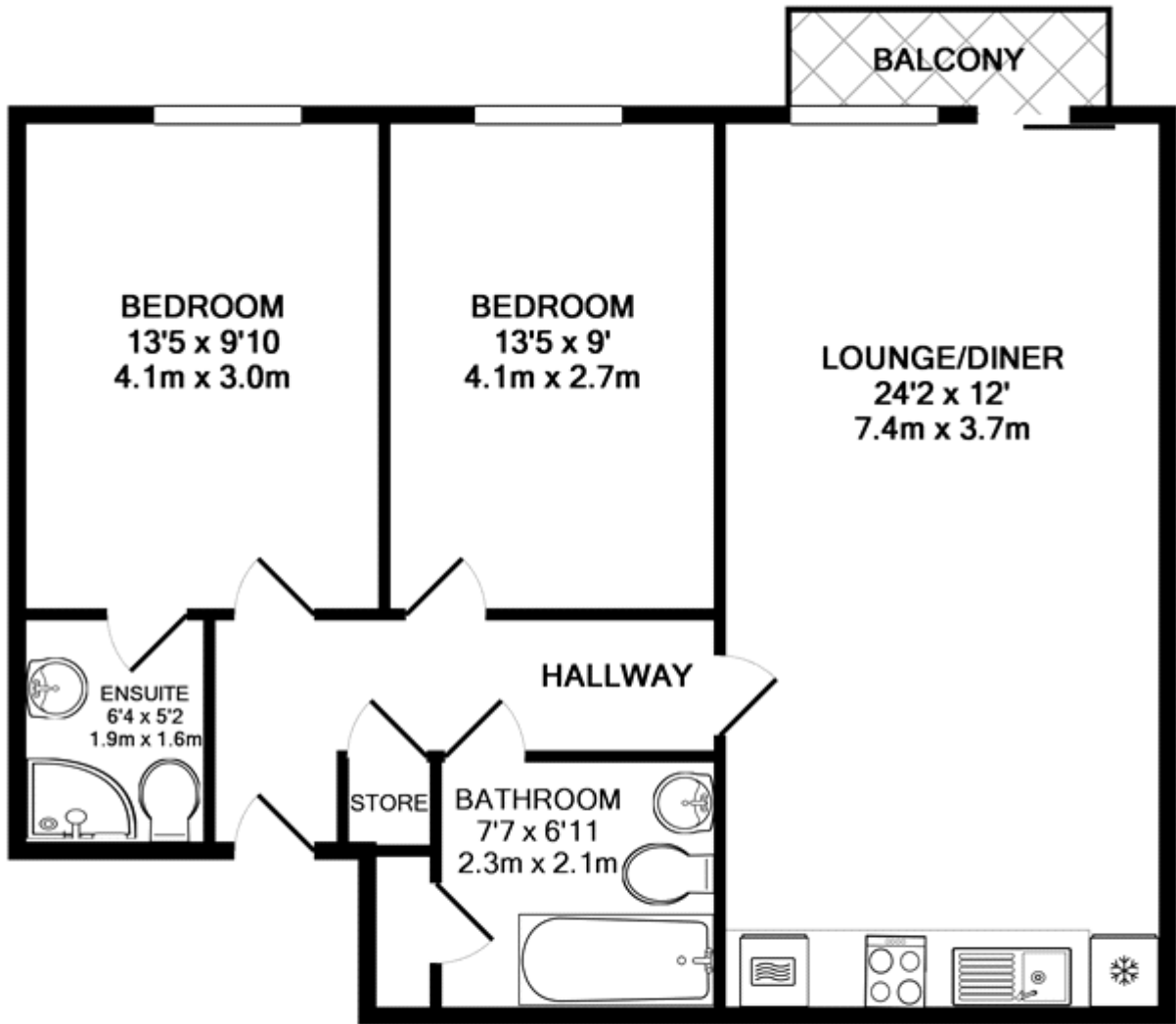
Call: 020 8293 8600

1st avenue, 128 Metcalfe Court, West Parkside, London SE10 0EL
email: info@1stavenue.co.uk

Metcalfe Court, Greenwich, London, SE10 0BZ

£1,550 PCM

1stavenue
Real Estate Services



TOTAL APPROX. FLOOR AREA 703 SQ.FT. (65.3 SQ.M.)

Whilst every attempt has been made to ensure the accuracy of the floor plan contained here, measurements of doors, windows, rooms and any other items are approximate and no responsibility is taken for any error, omission, or mis-statement. This plan is for illustrative purposes only and should be used as such by any prospective purchaser. The services, systems and appliances shown have not been tested and no guarantee as to their operability or efficiency can be given

Made with Metropix ©2015

Viewing by appointment with 1st avenue.

Call: 020 8293 8600

1st avenue, 128 Metcalfe Court, West Parkside, London SE10 0EL
email: info@1stavenue.co.uk

1stavenue
Real Estate Services