





- Entrance Hall
- Two Reception Rooms
- Modern Fitted Kitchen
- Two Double Bedrooms
- Large Bathroom
- Rear Courtyard
- On Street Parking

Description

A well modernised mid-terrace home, which is located in a popular and convenient location, which is close to Northwich town centre. The property is decorated to a high standard and features gas central heating and PVCu double glazing. The accommodation comprises: Entrance hall, lounge, dining room, kitchen, first floor landing, two double bedrooms and a large modern bathroom. Externally there is a small rear courtyard and there is unrestricted on street parking to the front. Immediately available, restrictions apply.



Location
Tenure

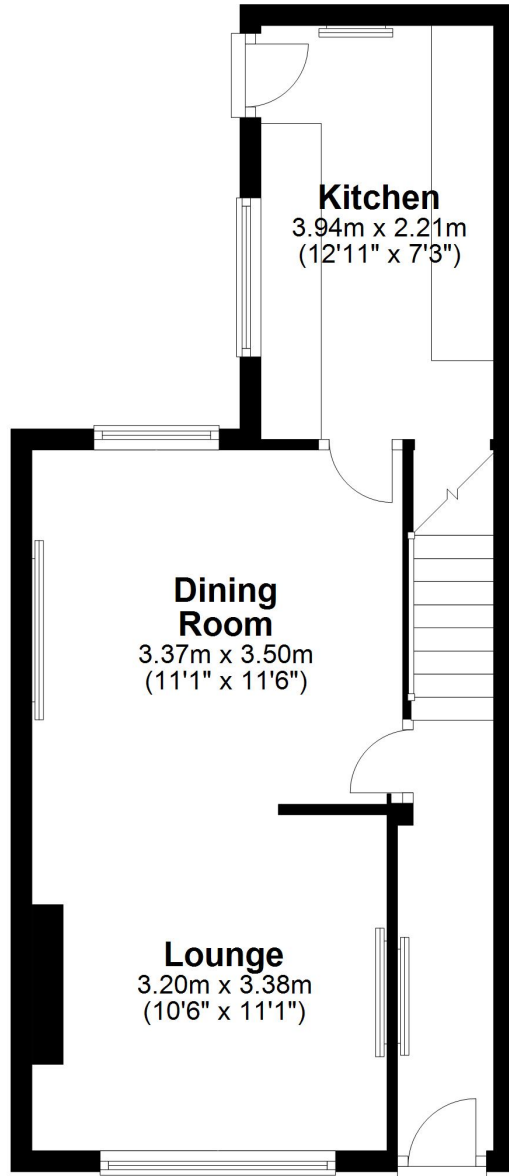
EPC Rating: D

Important Notes
Type Here



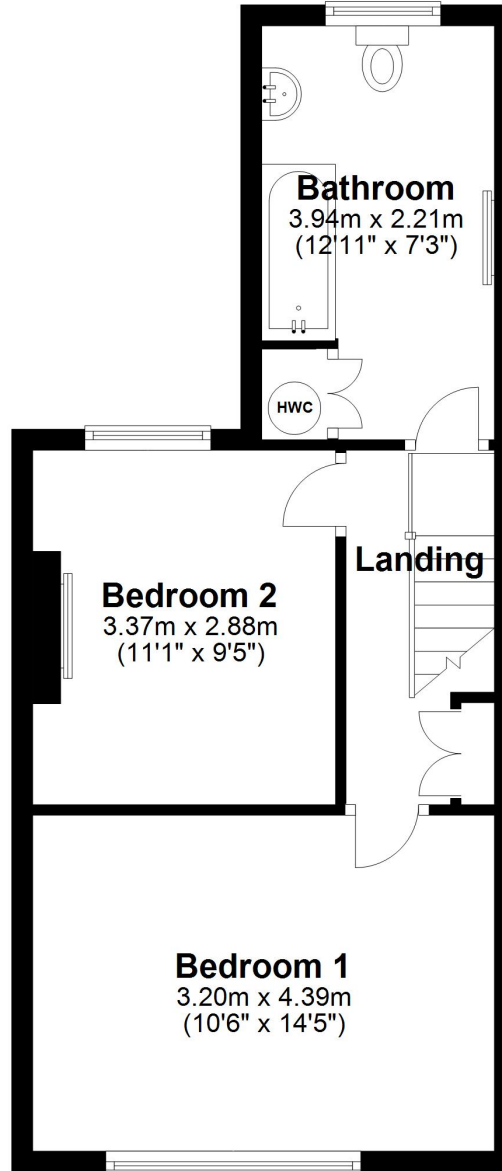
Ground Floor

Approx. 38.1 sq. metres (410.6 sq. feet)



First Floor

Approx. 38.2 sq. metres (411.4 sq. feet)



Total area: approx. 76.4 sq. metres (822.0 sq. feet)