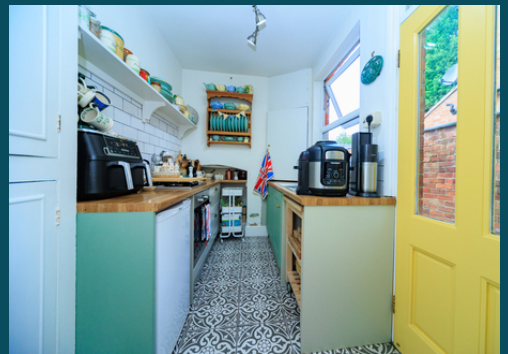


# MOORE & YORK



11 Bampton Street, Loughborough, Leicestershire, LE11 2DR

A beautifully presented two double bedroomed character home in this sought after location which is within easy walking distance of the wide range of amenities in the town centre, the University and College campuses and Loughborough Endowed Schools yet enjoying a position which is backwater-like. The property also offers two good sized reception rooms, a lovely kitchen and spacious modern bathroom as well as a manageable garden and outbuildings. Offered with NO UPWARD CHAIN.

**£218,000 Freehold**