

FOR SALE

Westcott Crescent,
Hanwell, W7

Terraced House
Hanwell

£650,000 fh

3  1  1 



**horton
and garton**

SALES / LETTINGS / PROPERTY MANAGEMENT

hortonandgarton.co.uk | Sales 020 3989 6464 | Lettings 020 3989 5454
161 Chiswick High Road, London, W4 2DT



FOR SALE

Westcott Crescent,
Hanwell, W7

Terraced House
Hanwell

£650,000 fh

3  1  1 



**horton
andgarton**

SALES / LETTINGS / PROPERTY MANAGEMENT

hortonandgarton.co.uk | Sales 020 3989 6464 | Lettings 020 3989 5454
161 Chiswick High Road, London, W4 2DT



FOR SALE

Westcott Crescent,
Hanwell, W7

Terraced House
Hanwell

£650,000 fh

3  1  1 

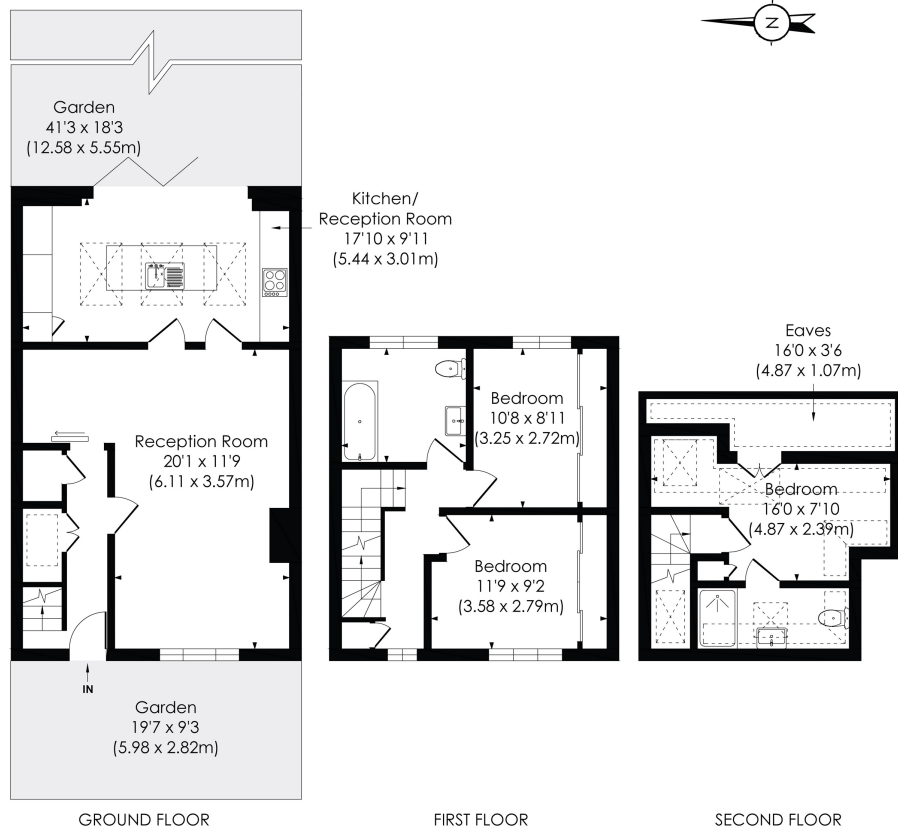


**horton
andgarton**

SALES / LETTINGS / PROPERTY MANAGEMENT

hortonandgarton.co.uk | Sales 020 3989 6464 | Lettings 020 3989 5454
161 Chiswick High Road, London, W4 2DT





WESTCOTT CRESCENT, W7

Approx. Gross Internal Floor Area
1079 Sq' / 100.25 SqM (excl. Eaves)
1135 Sq' / 105.46 SqM (incl. Eaves)

**horton
andgarton**

© Pixangle Property Marketing Ltd. info@pixangle.com Tel: 0208 870 2118

This floor plan has been prepared for the purpose of illustration only in accordance with the latest RICS code of measuring practice and is not to scale. All measurements and areas are approximate and whilst every effort has been made to ensure the accuracy of the plan contained here, no responsibility is taken for any error, omission or misstatement.



Freehold Family Home | Three bedrooms - Two
bathrooms | 1079 Sq' - 100.205 SqM | EPC rating C |
Hanwell



hortonandgarton.co.uk
Sales 020 3989 6464
Lettings 020 3989 5454

161 Chiswick High Road, London, W4 2DT