

SOLE
AGENT

Apartment 6 Brehon House

Brehon House | Rue de Vega | St Peter Port | GY12GB

One bedroom ground floor apartment conveniently situated close to Admiral Park within the Brehon House Development.

Accommodation comprises: entrance hall, open plan lounge/diner/kitchen, double bedroom and bathroom. No children, pets or smokers. Available 1st February.

1 BEDROOM

1 BATHROOM

1 RECEPTION

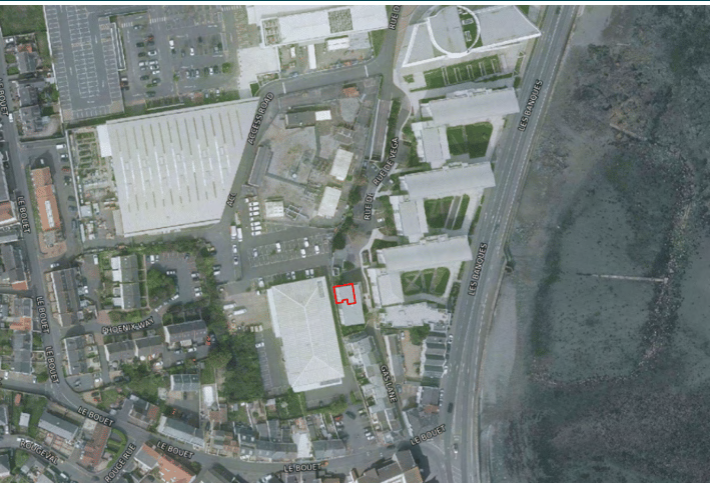
£1,460 pcm

Shields
& Rutland

PHOTOS



SPECIFICATIONS



- Entrance hall**
2.12m x 1.41m (6' 11" x 4' 8")
- Lounge/Kitchen/Diner**
7.62m x 4.00m (25' x 13' 1")
- Bedroom**
4.29m x 2.75m (14' 1" x 9')
- Bathroom**
2.96m x 2.15m (9' 9" x 7' 1")

PRICE INCLUDES

- Carpets/fitted flooring
- Blinds
- Light fittings

SPECIAL FEATURES

- Quiet off road location
- Outskirt of town
- Light and spacious
- Ground floor

SERVICES

Mains water, electric and drainage. Electric central heating

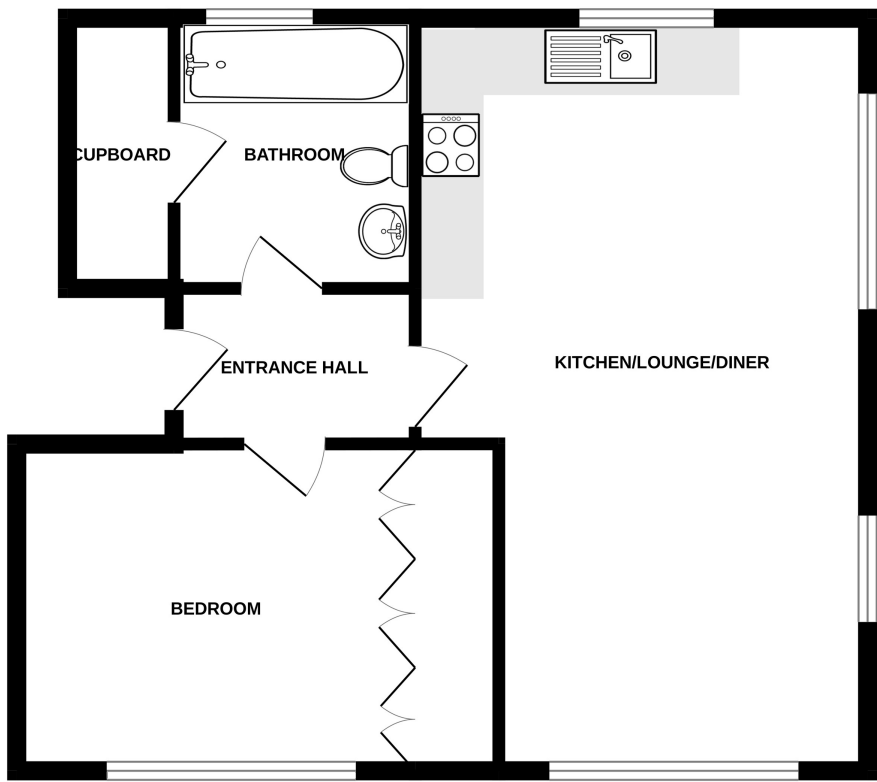
APPLIANCES INCLUDED

- Electric cooker and hob
- Fridge/freezer
- Washer/dryer

SCHOOL CATCHMENT

n/a

GROUND FLOOR



6 BREHON

Whilst every attempt has been made to ensure the accuracy of the floorplan contained here, measurements of doors, windows, rooms and any other items are approximate and no responsibility is taken for any error, omission or mis-statement. This plan is for illustrative purposes only and should be used as such by any prospective purchaser. The services, systems and appliances shown have not been tested and no guarantee as to their operability or efficiency can be given.
Made with Metropix ©2025