



7 Gwendoline Court, Woodthorpe Road, Ashford, Surrey, TW15 3JS

WELL PRESENTED & SPACIOUS ONE BEDROOM APARTMENT IN SOUGHT AFTER DEVELOPMENT IDEALLY LOCATED WITHIN MOMENTS OF ASHFORD TOWN CENTRE & MAINLINE TRAIN STATION. The property benefits from a spacious lounge/diner, separate modern fitted kitchen/breakfast room, large double bedroom & modern white bathroom suite. Available Immediately. Call Now to View!

ROOM DESCRIPTIONS

Communal Entrance

With security entry door, stairs to second floor.

Second Floor

Entrance Hall

Light and power points, heater, cupboard housing hot water tank, doors to:

Lounge/Diner



Rear aspect UPVC double glazed window, light and power points, TV point, heater.

Kitchen/Breakfast Room



Side aspect UPVC double glazed window, range of fitted units at eye and base level, roll edged worktops, sink drainer unit, built-in oven and hob with extractor, space for washing machine and fridge/freezer. Breakfast bar, partly tiled walls.

Bedroom

Rear aspect UPVC double glazed window, light and power points, heater.

Bathroom



Side aspect UPVC double glazed window, panel enclosed bath, wash hand basin, low level W.C, heater, partly tiled walls.

ROOM DESCRIPTIONS

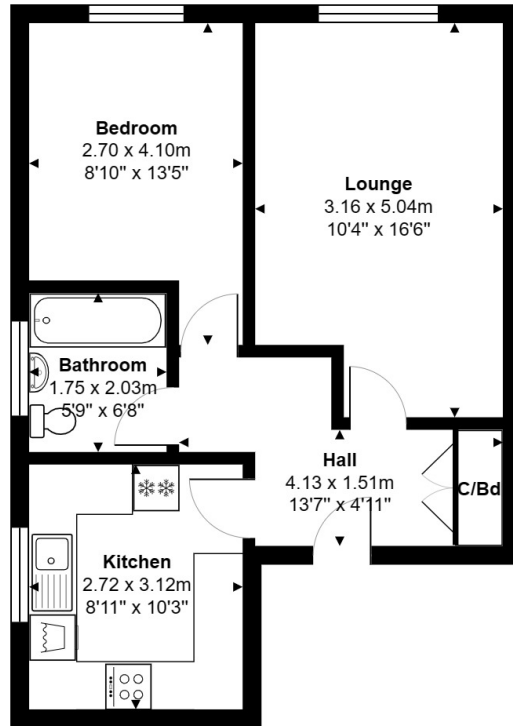
Outside

Communal Grounds, Parking & Garage



Well kept communal gardens, residents parking & garage in block to rear.

FLOORPLAN



Second Floor

Total Area: 45.9 m² ... 494 ft²

All measurements are approximate and for display purposes only.