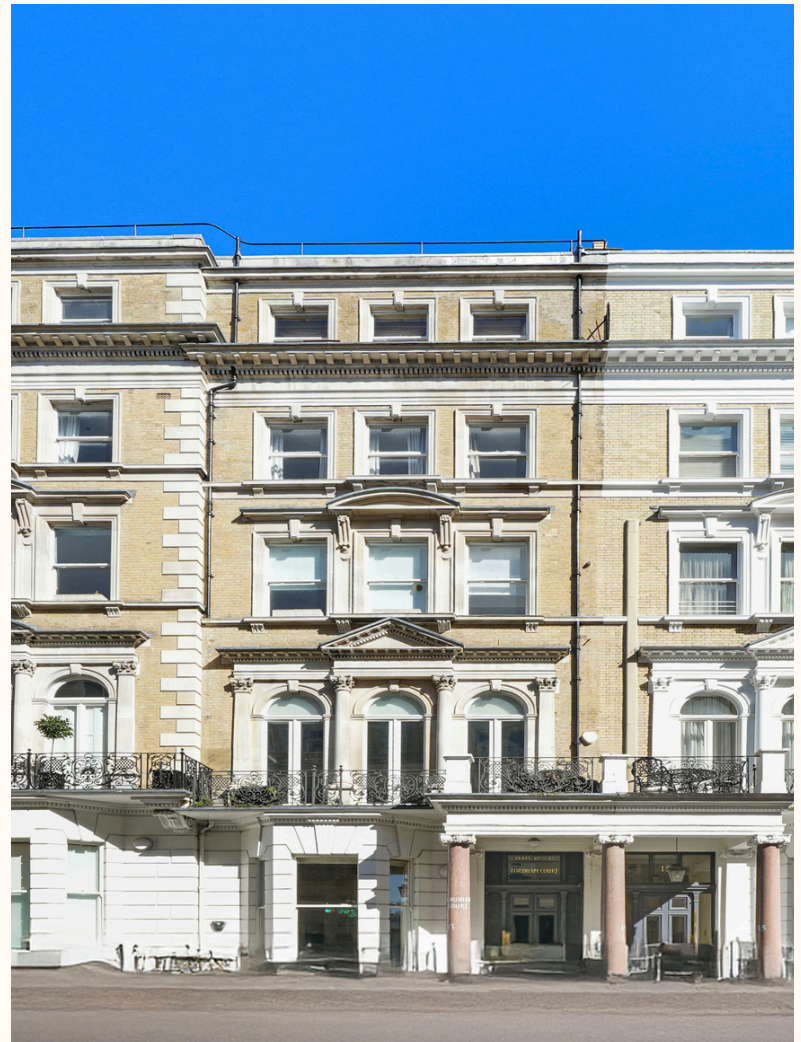


# DE VERE GARDENS W8











## Description

A grand and magnificent raised ground floor apartment in a period building located near Kensington Gardens.

Offering approximately 2000 sq ft of accommodation, the bright and west facing reception room benefits from 4.2m ceiling heights, marble fireplace, solid oak parquet flooring and original cornice. Adjacent is the bespoke kitchen with Gaggenau and Sub Zero appliances.



The large and luxurious principal bedroom also offers high ceilings and almost full length windows allowing plenty of natural light with the added benefit of an en-suite bathroom and dressing room on the mezzanine level. The second double bedroom benefits from built in wardrobes and an en-suite bathroom.



On the mezzanine level is the flexibility of a third bedroom, currently being used as a study and there is an additional shower room with guest W/C.

De Vere Gardens is perfectly positioned with Kensington Palace Gardens just at the top of the road and within close proximity to the local amenities of High Street Kensington, Knightsbridge and Gloucester Road.











## SUMMARY

Apartment  
 2 Bedrooms  
 3 Bathrooms (2 en-suite)  
 Large Reception  
 Separate Bespoke Kitchen  
 Study  
 Dressing Room  
 Close to High Street Kensington and  
 Kensington Palace Gardens  
 Leasehold (approx. 152 years remaining)  
 Approx. 1922 Sq Ft (178.55 Sq M)  
 Service Charge approx £4,792 p.a.

Guide Price: **£2,995,000**  
 (subject to contract)









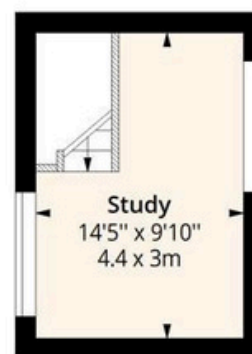
# Fordham Court, W8

Approx. Gross Internal Area 1922 Sq Ft - 178.55 Sq M



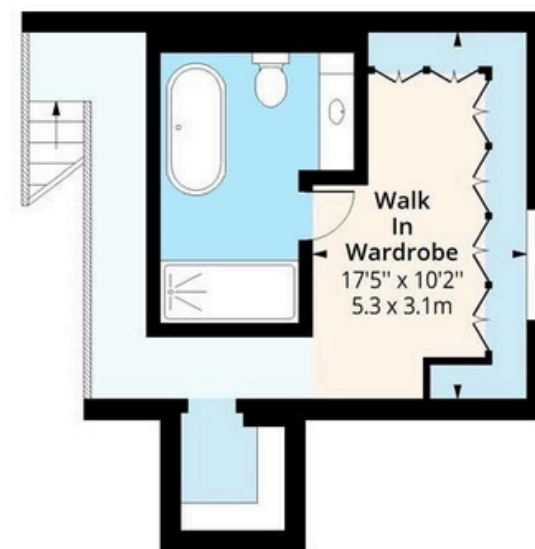
## Raised Ground Floor

Floor Area 1374 Sq Ft - 127.64 Sq M



## Mezzanine

Floor Area 142 Sq Ft - 13.19 Sq M



## Mezzanine

Floor Area 406 Sq Ft - 37.72 Sq M



Measured according to RICS IPMS2. Floor plan is for illustrative purposes only and is not to scale. Every attempt has been made to ensure the accuracy of the floor plan shown, however all measurements, fixtures, fittings and data shown are an approximate interpretation for illustrative purposes only. 1 sq m = 10.76 sq feet.

FL 10/10/2021

Date: 4/3/2025

+44 (0) 20 7372 3000

sales@regentsresidential.com

